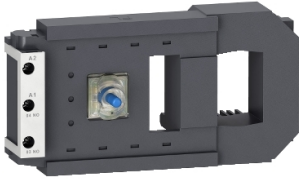


Product data sheet

Specifications



TeSys F - specific contactor coil - 150 V AC 40..400 Hz low consumption

LX9FF150

⚠ Discontinued on: Jul 12, 2021

⚠ Discontinued

Main

Range	TeSys
Product or Component Type	Specific contactor coil
Device short name	LX9FF
Range compatibility	TeSys TeSys F LC1F contactor
Product Compatibility	LC1F115 LC1F150
Control circuit type	AC 40...400 Hz low consumption
[Uc] control circuit voltage	150 V AC 40...400 Hz
Average resistance	1160 Ohm holding 68 °F (20 °C) 29.42 Ohm inrush 68 °F (20 °C)
Operating time	130 ms opening 35 ms closing
Mechanical durability	10 Mcycles
Maximum operating rate	2400 cyc/h 131 °F (55 °C)

Complementary

Coil technology	Without built-in suppressor module
Control circuit voltage limits	Operational 0.85...1.1 Uc 131 °F (55 °C) Drop-out 0.35...0.55 Uc 131 °F (55 °C)
Inrush power in VA	690...855 VA 40...400 Hz (at 68 °F (20 °C))
Hold-in power consumption in VA	6.6...8.1 VA 40...400 Hz (at 68 °F (20 °C))
Heat dissipation	5.9...7.2 W

Environment

Ambient Air Temperature for Operation	23...131 °F (-5...55 °C)
Net Weight	0.95 lb(US) (0.43 kg)

Ordering and shipping details

Category	22341-CONTACTOR,D,K,&F ACCESS
Discount Schedule	I12
GTIN	3389118112575
Returnability	No

Price is "List Price" and may be subject to a trade discount – check with your local distributor or retailer for actual price.

Packing Units

Unit Type of Package 1	PCE
Nbr. of units in pkg.	1
Package 1 Height	2.4 in (6.2 cm)
Package 1 Width	3.1 in (7.9 cm)
Package 1 Length	6.5 in (16.6 cm)
Package weight(Lbs)	15.2 oz (430 g)

Contractual warranty

Warranty (in months)	18
----------------------	----



Environmental Data

Schneider Electric aims to achieve Net Zero status by 2050 through supply chain partnerships, lower impact materials, and circularity via our ongoing “Use Better, Use Longer, Use Again” campaign to extend product lifetimes and recyclability.

[Environmental Data explained >](#)

[How we assess product sustainability >](#)

Use Longer



Lifetime extension

Repair

No