

			M18 Metal (1) Cable	M12 connector	M18 Plastic Cable	M12 connector
<b>Diffuse</b>	<b>Sensing distance</b>		0.6 m (2) (3)		0.6 m (2) (3)	
	Output type	DC3 NO	PNP XUB5BPANL2	XUB5BPANM12	XUB5APANL2	XUB5APANM12
			NPN XUB5BANL2	XUB5BANM12	XUB5ANANL2	XUB5ANANM12
	AC/DC, 1 C/O relay		–	–	–	–
With background suppression	NO	PNP	XU8M18MA230	XU8MA230K	–	–
		NPN	–	–	–	–
	AC/DC relay output		–	–	–	–
<b>Polarized retroreflective</b>	<b>Sensing distance (4)</b>		2 m		2 m	
	Output type	DC3 NO	PNP XUB9BPANL2	XUB9BPANM12	XUB9APANL2	XUB9APANM12
			NPN XUB9BANL2	XUB9BANM12	XUB9ANANL2	XUB9ANANM12
	AC/DC 1C/O relay		–	–	–	–
<b>Retroreflective</b>	<b>Sensing distance (4)</b>		4 m		4 m	
	Output type	DC3 NO	PNP XUB1BPANL2	XUB1BPANM12	XUB1APANL2	XUB1APANM12
			NPN XUB1BANL2	XUB1BANM12	XUB1ANANL2	XUB1ANANM12
	AC/DC 1C/O relay		–	–	–	–
<b>Thru-beam</b>	<b>Sensing distance</b>		15 m		15 m	
	Output type	DC3 NO	PNP XUB2BPANL2R	XUB2BPANM12R	XUB2APANL2R	XUB2APANM12R
			NPN XUB2BANL2R	XUB2BANM12R	XUB2ANANL2R	XUB2ANANM12R
	AC/DC 1C/O relay		–	–	–	–
<b>Output function</b>	NO		A	A	A	A
	NC		B	B	B	B
<b>Thru-beam transmitter</b>	DC		XUB2BKSNL2T	XUB2BKSNM12T	XUB2AKSNL2T	XUB2AKSNM12T
	AC/DC		–	–	–	–
<b>Multimode</b>	<b>Sensing distance</b>		Background suppression: 0.12 m. Diffuse: 0.4 m. Polarized retroreflective: 3 m. Thru-beam: 20 m.			
	Output type	DC3 NO/NC	PNP XUB0BPSNL2	XUB0BPSNM12	XUB0APSNL2	XUB0APSNM12
			NPN XUB0BNSNL2	XUB0BNSNM12	XUB0ANSNL2	XUB0ANSNM12
		PNP/NPN	–	–	–	–
	AC/DC 1C/O relay		–	–	–	–
<b>Thru-beam transmitter</b>	DC		XUB0BKSNL2T	XUB0BKSNM12T	XUB0AKSNL2T	XUB0AKSNM12T
	AC/DC		–	–	–	–
<b>Mounting</b>			M18 x 1		M18 x 1	
<b>Dimensions, mm (in.)</b>			M18 x 64 (2.52) / M18 x 78 (3.07)			
<b>Product certifications</b>			CE, UL, CSA, C-Tick			CE, UL, CSA, C-Tick
<b>DC common specifications</b>						
	Supply voltage range (V), including ripple		10–36		10–36	
	Switching frequency (Hz)		500		500	
	Common specifications for DC versions		Switching capacity max.: 100 mA / Overload and short-circuit protection (★) / Output state LED			
<b>AC/DC common specifications</b>						
	Supply voltage range (V), including ripple		–		–	
	Switching frequency (Hz)		–		–	
	Output state LED (☉) / power on LED (☉)		–		–	

## Accessories

### Reflectors

Reflector (mm)	Part Number
Ø21	XUZC21
24 x 21	XUZC24
11 x 33	XUZC08
Ø39	XUZC39
Ø80	XUZC80
50 x 50	XUZC50
100 x 100	XUZC100

### 3D mountings with ball joint

Bracket with ball joint for sensors and reflector XUZC50

for

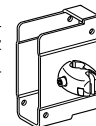
XUB●●●	XUZB2003
XUM0●●●	XUZM2003
XUK●●●	XUZK2003
XUX●●●	XUZX2003



Protective housing with ball joint

for

XUK●●●	XUZK2004
XUX●●●	XUZX2004



M12 rod for ball joint



XUZ2001

(1) Brass. Also available in stainless steel. See page 47 for the food/beverage processing series.

(2) For a sensing distance 0.1 m without sensitivity adjustment, replace digit 5 with 4 in the catalog number. Example: XUB5BPANL2 becomes XUB4BPANL2.

(3) With sensitivity adjustment.

(4) With reflector XUZC50, ordered separately.

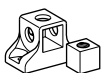
(5) For other cable options, see page 55.



Miniature Cable		M8 connector	Compact 50 x 50 mm		Compact 92 x 71 mm	
			Cable	M12 connector	Screw terminal	M12 connector
1 m (3)			1 m (3)		2.1 m (3)	
XUM5APCNL2	XUM5APCNM8	XUK5APANL2	XUK5APANM12	XUX5APANT16	XUX5APANM12	
XUM5ANCNL2	XUM5ANCNM8	XUK5ANANL2	XUK5ANANM12	XUX5ANANT16	XUX5ANANM12	
-	-	XUK5ARCNL2	-	XUX5ARCNT16	-	
XUM5APCNL2	XUM5APCNM8	XUK8AKSNL2	XUK8AKSNM12	XUX8AKSAT16	XUX8AKSAM12	
XUM5ANCNL2	XUM5ANCNM8	XUK8ARCTL2	-	XUX8ARCTT16	-	
-	-					
5 m (3)			5 m		11 m (3)	
XUM9APCNL2	XUM9APCNM8	XUK9APANL2	XUK9APANM12	XUX9APANT16	XUX9APANM12	
XUM9ANCNL2	XUM9ANCNM8	XUK9ANANL2	XUK9ANANM12	XUX9ANANT16	XUX9ANANM12	
-	-	XUK9ARCNL2	-	XUX9ARCNT16	-	
-	-					
-	-	7 m		14 m (3)		
-	-	XUK1APANL2	XUK1APANM12	XUX1APANT16	XUX1APANM12	
-	-	XUK1ANANL2	XUK1ANANM12	XUX1ANANT16	XUX1ANANM12	
-	-	XUK1ARCNL2	-	XUX1ARCNT16	-	
-	-					
15 m (3)			30 m		40 m (3)	
XUM2APCNL2R	XUM2APCNM8R	XUK2APANL2R	XUK2APANM12R	XUX2APANT16R	XUX2APANM12R	
XUM2ANCNL2R	XUM2ANCNM8R	XUK2ANANL2R	XUK2ANANM12R	XUX2ANANT16R	XUX2ANANM12R	
-	-	XUK2ARCNL2R	-	XUX2ARCNT16R	-	
		A	A	A	A	
		B	B	B	B	
XUM2AKCNL2T	XUM2AKCNM8T	XUK2AKSNL2T	XUK2AKSNM12T	XUX0AKSAT16T	XUX0AKSAM12T	
-	-	XUK2ARCNL2T	-	XUX0ARCTT16T	-	
Background suppression: 0.1 m. Diffuse: 0.4 m.		Background suppression: 0.28 m. Diffuse: 0.8 m.		Background suppression: 1.3 m. Diffuse: 2 m.		
Polarized retroreflective: 3 m. Thru-beam: 10 m.		Polarized retroreflective: 4 m. Thru-beam: 30 m.		Polarized retroreflective: 11 m. Thru-beam: 40 m.		
XUM0APSAL2	XUM0APSAM8	-	-	-	-	
XUM0ANSAL2	XUM0ANSAM8	-	-	-	-	
-	-	XUK0AKSAL2	XUK0AKSAM12	XUX0AKSAT16	XUX0AKSAM12	
-	-	XUK0ARCTL2	-	XUX0ARCTT16	-	
XUM0AKSAL2T	XUM0AKSAM8T	XUK0AKSAL2T	XUK0AKSAM12T	XUX0AKSAT16T	XUX0AKSAM12T	
-	-	XUK0ARCTL2T	-	XUX0ARCTT16T	-	
Direct mounting centers 25.5, M3 screws 12 x 34 x 20 (0.47 x 1.34 x 0.79) CE, UL, CSA, C-Tick		Direct mounting centers 40 x 40, M4 screws 18 x 50 x 50 (0.71 x 1.97 x 1.97) CE, UL, CSA, CCC, C-Tick		Direct mounting centers 30/38 to 40/50/74, M5 screws 30 x 92 x 71 (1.18 x 3.62 x 2.80) CE, UL, CSA, CCC, C-Tick		
10-30		10-30		10-36		
1000		500		500		
indicator (⊗): yes / power on LED (⊗): yes						
-		20-264		20-264		
-		20		20		
-		⊗ / ⊗		⊗ / ⊗		

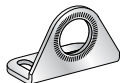
### Simple mounting devices

Mounting support for M12 rod



XUZ2003

Single bracket



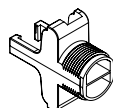
for	standard
XUB●●●	XUZA118 (stainless steel)
XUM●●●	XUZAM02
XUK●●●	XUZA51
XUX●●●	XUZX2000

Conduit adapter (ISO 16 to 1/2" NPT)



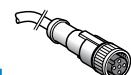
XUZX2001

Plastic Ø18 mounting adapter (XUM2, XUM5, and XUM9)



XUZASM001

### Adaptable female plug-in connectors, including PUR prewired versions (5)



5 m without LED	prewired, elbowed	prewired, straight
M8	XZCP1041L5	XZCP0941L5
M12	XZCP1241L5	XZCP1141L5