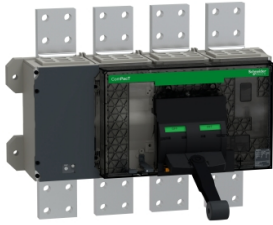


Product datasheet

Specifications



Circuit breaker frame, ComPacT NS3200H, 85kA at 415VAC, 3200A, 4P, fixed, manually operated, without control unit

C320H4FM

Main

Range	ComPacT
Range of product	ComPacT NS1600b...3200 new generation
Product or component type	Basic frame
Device application	Distribution
Number of poles	4P
Neutral position	Left
[In] rated current	3200 A at 50 °C
[Ue] rated operational voltage	690 V AC 50/60 Hz
Network type	AC
Network frequency	50/60 Hz
Suitability for isolation	Yes conforming to EN/IEC 60947-2
Utilisation category	Category B
Breaking capacity	125 kA Icu at 220/240 V AC 50/60 Hz conforming to IEC 60947-2 85 kA Icu at 380/415 V AC 50/60 Hz conforming to IEC 60947-2 85 kA Icu at 440 V AC 50/60 Hz conforming to IEC 60947-2
Breaking capacity code	H 85 kA 415 V AC
Control type	Manually operated
Mounting mode	Fixed

Complementary

[Ui] rated insulation voltage	800 V AC 50/60 Hz conforming to IEC 60947-2
[Uimp] rated impulse withstand voltage	8 kV conforming to IEC 60947-2
[Ics] rated service breaking capacity	94 kA at 220/240 V AC 50/60 Hz conforming to IEC 60947-2 64 kA at 380/415 V AC 50/60 Hz conforming to IEC 60947-2 64 kA at 440 V AC 50/60 Hz conforming to IEC 60947-2
[Icw] rated short-time withstand current	32 kA 3 s conforming to IEC 60947-2
Integral instant protection	130 kA
Mechanical durability	5000 cycles conforming to IEC 60947-2
Electrical durability	1000 cycles 690 V AC 50/60 Hz In conforming to IEC 60947-2 2000 cycles 690 V AC 50/60 Hz In/2 conforming to IEC 60947-2 2000 cycles 440 V AC 50/60 Hz In conforming to IEC 60947-2 3000 cycles 440 V AC 50/60 Hz In/2 conforming to IEC 60947-2
Power losses	227 W
Mounting support	Backplate
Connection pitch	115 mm

Excluding VAT, FCA Jabal Ali & amp; are subject to change – check with your local distributor.

Protection type	Without protection
Height (H)	330 mm
Width (W)	535 mm
Depth (D)	160 mm

Environment

Standards	IEC 60947-2
Product certifications	IECEE CB Scheme
Overvoltage category	III
Electrical shock protection class	Class II on front face
Pollution degree	3 conforming to IEC 60947
IP degree of protection	IP40 conforming to IEC 60529
IK degree of protection	IK07 conforming to EN 50102
Ambient air temperature for operation	-25...70 °C
Ambient air temperature for storage	-50...85 °C

Packing Units

Unit Type of Package 1	PCE
Number of Units in Package 1	1
Package 1 Height	43.0 cm
Package 1 Width	60.0 cm
Package 1 Length	80.0 cm
Package 1 Weight	66.234 kg

Contractual warranty

Warranty (in months)	18
-----------------------------	----



Environmental Data

Schneider Electric aims to achieve Net Zero status by 2050 through supply chain partnerships, lower impact materials, and circularity via our ongoing “Use Better, Use Longer, Use Again” campaign to extend product lifetimes and recyclability.

[Environmental Data explained >](#)

[How we assess product sustainability >](#)

Use Better



Materials and Substances

Packaging made with recycled cardboard	Yes
Packaging without single use plastic	No
SCIP Number	228b8554-bb98-43c5-8445-d118744be8d8
EU RoHS Directive	Compliant By Exemption
REACH Regulation	Reference contains Substances of Very High Concern above the threshold

Use Longer




Lifetime extension

Repair	No
--------	----

Use Again



Repack and remanufacture

Take-back	Nej
WEEE Label	 The product must be disposed on European Union markets following specific waste collection and never end up in rubbish bins