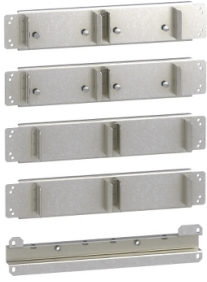


Product data sheet

Specifications



mounting kit, Altivar Process Modular, 2 standard power module in 600mm cabinet

VW3A99ACFCB

Main

Range of product	Altivar Process Modular
Accessory / separate part category	Installation accessory
Accessory / separate part type	Mounting kit
Product compatibility	Power module APM, 200...315 kW, 380...480 V
Accessory / separate part destination	Single drive architecture

Complementary

Device application	Integration 2 23.6 in (600 mm) cabinet
Kit composition	1 top fixing and lifting bar of the line choke box 4 rear plates with metallic lateral guidance of the power module
Net weight	20.9 lb(US) (9.5 kg)

Packing Units

Unit Type of Package 1	PCE
Number of Units in Package 1	1
Package 1 Height	9.252 in (23.500 cm)
Package 1 Width	16.929 in (43.000 cm)
Package 1 Length	29.134 in (74.000 cm)
Package 1 Weight	27.485 lb(US) (12.467 kg)
Unit Type of Package 2	P06
Number of Units in Package 2	2
Package 2 Height	29.528 in (75.000 cm)
Package 2 Width	23.622 in (60.000 cm)
Package 2 Length	31.496 in (80.000 cm)
Package 2 Weight	77.016 lb(US) (34.934 kg)

Contractual warranty

Warranty (in months)	18
----------------------	----



Environmental Data

Schneider Electric aims to achieve Net Zero status by 2050 through supply chain partnerships, lower impact materials, and circularity via our ongoing “Use Better, Use Longer, Use Again” campaign to extend product lifetimes and recyclability.

[Environmental Data explained >](#)

[How we assess product sustainability >](#)

Use Better



Materials and Substances

Packaging made with recycled cardboard

Yes

Packaging without single use plastic

No

EU RoHS Directive

[Compliant](#)

REACH Regulation

[Free of Substances of Very High Concern above the threshold](#)

Use Longer



Lifetime extension

Repair

No

Use Again



Repack and remanufacture

Take-back

No