

# Product data sheet

Specifications



Limit switch, Limit switches XC Standard, XCKN, thermoplastic plastic roller lever var.length, 1NC+1 NO, snap, Pg11

XCKN2145G11

## Main

Range of product	Telemecanique Limit switches XC Standard
Series name	Standard format
Product or component type	Limit switch
Device short name	XCKN
Sensor design	Compact
Body type	Fixed
Head type	Rotary head
Material	Plastic
Body material	Plastic
Head material	Plastic
Fixing mode	By the body
Movement of operating head	Rotary
Type of operator	Spring return roller lever thermoplastic variable length
Type of approach	Lateral approach, 2 directions
Cable entry	1 entry tapped for Pg 11 cable gland
Number of poles	2
Contacts type and composition	1 NC + 1 NO
Contact operation	Snap action

## Complementary

Switch actuation	By 30° cam
Electrical connection	Screw-clamp terminals 1 x 0.34...2 x 1.5 mm <sup>2</sup>
Contacts insulation form	Zb
Positive opening	With
Positive opening minimum torque	1.33 lbf.in (0.15 N.m)
Minimum torque for tripping	0.89 lbf.in (0.1 N.m)
Maximum actuation speed	4.92 ft/s (1.5 m/s)
Contact code designation	A300, AC-15 (Ue = 240 V), Ie = 3 A 10 A EN/IEC 60947-5-1 appendix A R300, DC-13 (Ue = 250 V), Ie = 0.1 A EN/IEC 60947-5-1 appendix A

<b>[Ui] rated insulation voltage</b>	300 VUL 508 500 V 3)IEC 60947-1 300 VCSA C22.2 No 14
<b>[Uimp] rated impulse withstand voltage</b>	6 kV IEC 60664 6 kV IEC 60947-1
<b>Short-circuit protection</b>	10 A cartridge fuse gG
<b>Electrical durability</b>	5000000 cycles, DC-13, 120 V, 4 W 60 cyc/mn 0.5 IEC 60947-5-1 appendix C 5000000 cycles, DC-13, 24 V, 10 W 60 cyc/mn 0.5 IEC 60947-5-1 appendix C 5000000 cycles, DC-13, 48 V, 7 W 60 cyc/mn 0.5 IEC 60947-5-1 appendix C
<b>Mechanical durability</b>	10000000 cycles
<b>Width</b>	1.18 in (30 mm)
<b>Height</b>	4.25...6.18 in (108...157 mm)
<b>Depth</b>	1.65 in (42 mm)
<b>Net weight</b>	0.40 lb(US) (0.18 kg)
<b>Terminals description ISO n°1</b>	(13-14)NO (21-22)NC

## Environment

<b>Shock resistance</b>	45 gn 11 ms IEC 60068-2-27
<b>Vibration resistance</b>	25 gn 10...500 Hz)IEC 60068-2-6
<b>IP degree of protection</b>	IP65 IEC 60529
<b>IK degree of protection</b>	IK04 EN 50102
<b>Overvoltage category</b>	Class II IEC 61140 Class II NF C 20-030
<b>Ambient air temperature for operation</b>	-13...158 °F (-25...70 °C)
<b>Ambient air temperature for storage</b>	-40...158 °F (-40...70 °C)
<b>Protective treatment</b>	TC
<b>Product certifications</b>	UL CCC CSA
<b>Standards</b>	EN 60947-5-1 EN 60204-1 CSA C22.2 No 14 IEC 60947-5-1 IEC 60204-1 UL 508

## Packing Units

<b>Unit Type of Package 1</b>	PCE
<b>Number of Units in Package 1</b>	1
<b>Package 1 Height</b>	4.13 in (10.5 cm)
<b>Package 1 Width</b>	6.30 in (16.0 cm)
<b>Package 1 Length</b>	12.09 in (30.7 cm)
<b>Package 1 Weight</b>	3.53 oz (100.0 g)
<b>Unit Type of Package 2</b>	BB1
<b>Number of Units in Package 2</b>	20
<b>Package 2 Height</b>	4.13 in (10.5 cm)
<b>Package 2 Width</b>	6.30 in (16.0 cm)
<b>Package 2 Length</b>	12.09 in (30.7 cm)
<b>Package 2 Weight</b>	4.50 lb(US) (2.04 kg)

<b>Unit Type of Package 3</b>	S03
<b>Number of Units in Package 3</b>	60
<b>Package 3 Height</b>	11.81 in (30.0 cm)
<b>Package 3 Width</b>	11.81 in (30.0 cm)
<b>Package 3 Length</b>	15.75 in (40.0 cm)
<b>Package 3 Weight</b>	14.97 lb(US) (6.792 kg)

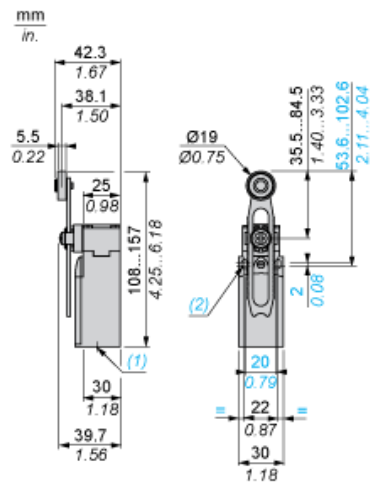
## Offer Sustainability

<b>Sustainable offer status</b>	Green Premium product
<b>REACH Regulation</b>	<a href="#">REACH Declaration</a>
<b>EU RoHS Directive</b>	Pro-active compliance (Product out of EU RoHS legal scope) <a href="#">EU RoHS Declaration</a>
<b>Mercury free</b>	Yes
<b>RoHS exemption information</b>	<a href="#">Yes</a>
<b>Environmental Disclosure</b>	<a href="#">Product Environmental Profile</a>

## Contractual warranty

<b>Warranty</b>	18 months
-----------------	-----------

**Dimensions**

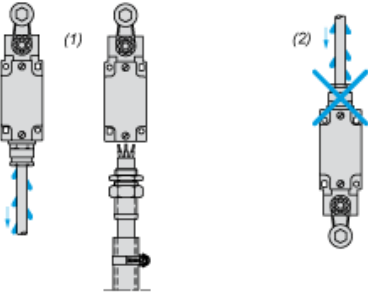


- (1) 1 tapped entry for Pg 11 cable gland
- (2) Ø: 2 elongated holes Ø 4.3 x 6.3 on 22 mm centres, 2 holes Ø 4.3 on 20 mm centres.

**Mounting with Cable Entry**

---

**Position of Cable Gland**

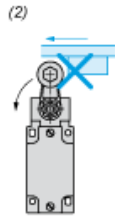
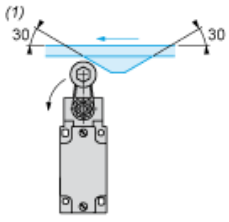


- (1) Recommended
- (2) To be avoided

**Mounting with Rotary Heads and Levers**

---

**Type of Cam**

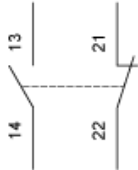


- (1) Recommended
- (2) To be avoided

**Wiring Diagram**

---

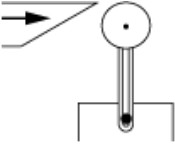
**2-pole NC + NO Snap Action**



**Characteristics of Actuation**

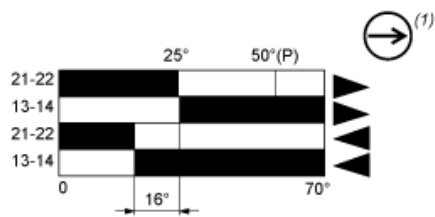
---

**Switch Actuation by 30° Cam**



Functionnal Diagram

---



- (2)
- (3)
- ▶ (4)
- ◀ (5)

- (P) Positive opening point
- (1) NC contact with positive opening operation
- (2) Closed
- (3) Open
- (4) Tripping
- (5) Resetting

Recommended replacement(s)