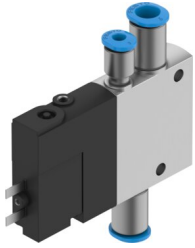


Air solenoid valve CPE10-M1BH-3OLS-QS-6

Part number: 196856

FESTO



[General operating condition](#)

Data sheet

Feature	Value
Valve function	3/2-way, monostable, open
Actuation type	Electrical
Width	10 mm
Normal nominal flow rate (normalized to DIN 1343)	300 l/min
Pneumatic working port	QS-6
Operating voltage	24V DC
Operating pressure	-0.09 MPa ... 1 MPa
Operating pressure	-0.9 bar ... 10 bar
Structural design	Piston gate valve
Reset method	Pneumatic spring
Certification	c UL us - recognized (OL)
Maritime classification	See certificate
Certificate issuing authority	DNV-TAA000032X UL MH19482
Degree of protection	IP65 With plug socket As per IEC 60529
Nominal width	4 mm
Sealing principle	Soft
Mounting position	Any
Manual override	Detenting via accessory Non-detenting
Type of control	Piloted
Pilot air supply port	External
Flow direction	Non-reversible
Symbol	00991402
Valve position ID	Label holder
Lap	Positive overlap
Pilot pressure MPa	0.25 MPa ... 0.8 MPa
Pilot pressure	2.5 bar ... 8 bar
Switching time off	14 ms
On switching time	14 ms
Duty cycle	100% in combination with holding current reduction
Max. positive test pulse with 0 signal	1200 µs
Max. negative test pulse on 1 signal	900 µs
Coil characteristics	24 V DC: 1.28 W

Feature	Value
Permissible voltage fluctuations	-15% / +10%
Operating medium	Compressed air as per ISO 8573-1:2010 [7:4:4]
Information on operating and pilot media	Operation with oil lubrication possible (required for further use)
Vibration resistance	Transport application test with severity level 2 as per FN 942017-4 and EN 60068-2-6
Shock resistance	Shock test with severity level 2 as per FN 942017-5 and EN 60068-2-27
Corrosion resistance class (CRC)	2 - Moderate corrosion stress
LABS (PWIS) conformity	VDMA24364-B1/B2-L
Temperature of medium	-5 °C ... 50 °C
Pilot medium	Compressed air as per ISO 8573-1:2010 [7:4:4]
Ambient temperature	-5 °C ... 50 °C
Electrical connection	2-pin
Type of mounting	With through-hole
Pilot exhaust air port 82	M3
Pilot air port 12	M3
Pneumatic connection 1	QS-6
Pneumatic connection 2	QS-6
Pneumatic connection 3	M7
Note on materials	RoHS compliant
Seals material	NBR
Housing material	Die-cast aluminum