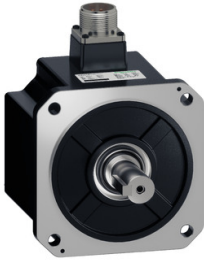


# Product datasheet

Specifications



## Servo motor BEH18, Lexium 18, 1.0kW, 220V, M130, 23bit, OPT MT, brake

BEH18MM1023CF6C

### Main

Range	Lexium 18
Range compatibility	Easy Lexium 18
Device short name	BEH18
Product or component type	Servo motor

### Complementary

Maximum mechanical speed	3000.0 rpm
[Us] rated supply voltage	220 V
Network number of phases	Single phase
Continuous stall current	5.31 A
Continuous stall torque	4.77 N.m, 220 V
Continuous power	1000 W
Peak stall torque	14.31 N.m, 220 V
Nominal output power	1000 W, 220 V
Nominal torque	4.77 N.m, 220 V
Nominal speed	2000 rpm, 220 V, single phase
Maximum current Irms	15.93 A at 1.0 kW, 220 V
Maximum permanent current	15.93 A
Product compatibility	Motion servo drive motion servo motors motor at 1.0 kW, 220 V
Shaft end	Parallel key
Second shaft	Without second shaft end
Shaft diameter	22.0 mm
Shaft length	58.0 mm
Key width	8.0 mm
Feedback type	23 bits optic multi turn encoder
Speed feedback resolution	8388608 points/turn
Holding brake	With
Holding torque	16.0 N.m
Mounting support	Asian standard flange
Motor flange size	130 mm
Electrical connection	2 connectors male/female

<b>Torque constant</b>	0.898 N.m/A at 40 °C
<b>Back emf constant</b>	62.73 V/krpm at 40 °C
<b>Number of motor poles</b>	10
<b>Rotor inertia</b>	14.56 kg.cm <sup>2</sup>
<b>Maximum radial force Fr</b>	686 N
<b>Maximum axial force Fa</b>	196 N
<b>Type of cooling</b>	Air-cooled
<b>Length</b>	167.6 mm
<b>Number of mounting holes</b>	4
<b>Circle diameter of the mounting holes</b>	9 mm
<b>Width</b>	167.6 mm
<b>Height</b>	130 mm
<b>Depth</b>	174.5 mm
<b>Net weight</b>	7.6 kg
<b>Network number of phases</b>	1
<b>Encoder type</b>	Optic encoder

## Environment

<b>IP degree of protection</b>	IP67
<b>Ambient air temperature for operation</b>	0...40 °C

## Packing Units

<b>Unit Type of Package 1</b>	PCE
<b>Number of Units in Package 1</b>	1
<b>Package 1 Height</b>	39.8 cm
<b>Package 1 Width</b>	29.9 cm
<b>Package 1 Length</b>	20 cm
<b>Package 1 Weight</b>	9.4 kg
<b>Unit Type of Package 2</b>	P06
<b>Number of Units in Package 2</b>	16
<b>Package 2 Height</b>	80 cm
<b>Package 2 Width</b>	60 cm
<b>Package 2 Length</b>	95 cm
<b>Package 2 Weight</b>	156.4 kg

## Contractual warranty

<b>Warranty (in months)</b>	18
-----------------------------	----



## Environmental Data

Schneider Electric aims to achieve Net Zero status by 2050 through supply chain partnerships, lower impact materials, and circularity via our ongoing “Use Better, Use Longer, Use Again” campaign to extend product lifetimes and recyclability.

[Environmental Data explained >](#)

[How we assess product sustainability >](#)



### Environmental footprint

Total lifecycle Carbon footprint	8 094 kg CO2 eq.
Carbon footprint of the manufacturing phase [A1 to A3]	56 kg CO2 eq.
Carbon footprint of the distribution phase [A4]	1 kg CO2 eq.
Carbon footprint of the installation phase [A5]	1 kg CO2 eq.
Carbon footprint of the use phase [B2, B3, B4, B6]	8 022 kg CO2 eq.
Carbon footprint of the end-of-life phase [C1 to C4]	14 kg CO2 eq.
Environmental Disclosure	<a href="#">Product Environmental Profile</a>

## Use Better



### Materials and Substances

Packaging made with recycled cardboard	No
Packaging without single use plastic	No
EU RoHS Directive	<a href="#">Compliant By Exemption</a>
REACH Regulation	<a href="#">Reference contains Substances of Very High Concern above the threshold</a>

## Use Longer



### Lifetime extension

Repair	No
--------	----

## Use Again



### Repack and remanufacture

End of life manual availability	<a href="#">End of Life Information</a>
Take-back	Nej