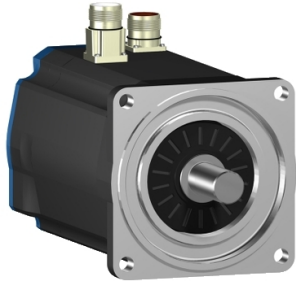


Product datasheet

Specifications



servo motor BSH, Lexium 15,
8.18N.m, 3500rpm, 100mm, keyed
shaft, Sincos single turn, without
brake, IP50, straight

BSH1004T11A1A

! Discontinued

! Discontinued on: May 4, 2023

Main

Device short name	BSH
Product or component type	Servo motor
Maximum mechanical speed	6000 rpm
Continuous stall torque	9.31 N.m for LXM15MD40N4, 230 V, three phase 8.18 N.m for LXM15LD28M3, 230 V, three phase
Peak stall torque	15.7 N.m for LXM15LD28M3, 230 V, three phase 21.04 N.m for LXM15MD40N4, 230 V, three phase
Nominal output power	2500 W for LXM15LD28M3, 230 V, three phase 2500 W for LXM15MD40N4, 230 V, three phase
Nominal torque	7 N.m for LXM15LD28M3, 230 V, three phase 7 N.m for LXM15MD40N4, 230 V, three phase
Nominal speed	3500 rpm for LXM15LD28M3, 230 V, three phase 3500 rpm for LXM15MD40N4, 230 V, three phase
Product compatibility	LXM15LD28M3 at 230 V three phase LXM15MD40N4 at 230 V three phase
Shaft end	Keyed
IP degree of protection	IP50 standard
Speed feedback resolution	131072 points/turn
Holding brake	Without
Mounting support	International standard flange
Electrical connection	Straight connectors

Complementary

Range compatibility	Lexium 15
supply voltage max	480 V
Network number of phases	Three phase
Continuous stall current	12.7 A
maximum continuous power	3.64 W
Maximum current Irms	34.8 A for LXM15LD28M3 61 A for LXM15MD40N4
Maximum permanent current	66.3 A
Second shaft	Without second shaft end
Shaft diameter	24 mm

Shaft length	50 mm
Key width	40 mm
Feedback type	Single turn SinCos Hiperface
Motor flange size	100 mm
Number of motor stacks	4
Torque constant	1.62 N.m/A at 120 °C 0.86 N.m/A at 120 °C
Back emf constant	103 V/krpm at 120 °C 50 V/krpm at 120 °C
Number of motor poles	8
Rotor inertia	4.22 kg.cm ²
Stator resistance	1.81 Ohm at 20 °C
Stator inductance	13 mH at 20 °C 2.9 mH at 20 °C
Stator electrical time constant	6.44 ms at 20 °C 7.18 ms at 20 °C
Maximum radial force Fr	1070 N at 1000 rpm 740 N at 3000 rpm 850 N at 2000 rpm
Maximum axial force Fa	0.2 x Fr
Type of cooling	Natural convection
Length	276.5 mm
Centring collar diameter	95 mm
Centring collar depth	3.5 mm
Number of mounting holes	4
Mounting holes diameter	9 mm
Circle diameter of the mounting holes	115 mm
Product weight	9.2 kg
Sizing reference	BSH1004T
Network number of phases	3
Accuracy error [angular]	1.4 °
Temperature copper hot	120 °C
Temperature magnet hot	100 °C
Temperature magnet rt	20 °C

Packing Units

Unit Type of Package 1	PCE
Number of Units in Package 1	1
Package 1 Height	19.2 cm
Package 1 Width	17.5 cm
Package 1 Length	55.7 cm
Package 1 Weight	10.0 kg

Contractual warranty



Environmental Data

Schneider Electric aims to achieve Net Zero status by 2050 through supply chain partnerships, lower impact materials, and circularity via our ongoing “Use Better, Use Longer, Use Again” campaign to extend product lifetimes and recyclability.

[Environmental Data explained >](#)

[How we assess product sustainability >](#)

Use Better



Materials and Substances

EU RoHS Directive

[Compliant By Exemption](#)

PVC free

Yes

Use Longer



Lifetime extension

Repair

No

Use Again



Repack and remanufacture

End of life manual availability

No need of specific recycling operations

WEEE Label



The product must be disposed on European Union markets following specific waste collection and never end up in rubbish bins