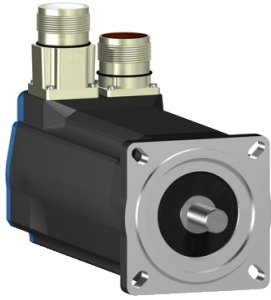


Product data sheet

Specifications



servo motor BSH, Lexium 05,
2.12N.m, 6000rpm, 70mm,
untapped shaft, Sincos multi turn,
without brake, IP65

BSH0702T22A2A

Product availability: Stock - Normally stocked in distribution facility

Main

Device short name	BSH
Product or Component Type	Servo motor
Maximum mechanical speed	8000 rpm
Continuous stall torque	<p>19.5 lbf.in (2.2 N.m) LXM32.D30M2 10 A, 115 V, single phase</p> <p>18.76 lbf.in (2.12 N.m) LXM05AD17M2, 200...240 V, single phase</p> <p>18.76 lbf.in (2.12 N.m) LXM05BD17M2, 200...240 V, single phase</p> <p>18.76 lbf.in (2.12 N.m) LXM05CD17M2, 200...240 V, single phase</p> <p>19.5 lbf.in (2.2 N.m) LXM32.D18M2 6 A, 230 V, single phase</p> <p>18.76 lbf.in (2.12 N.m) LXM05AD17F1, 110...120 V, single phase</p> <p>18.76 lbf.in (2.12 N.m) LXM05AD28M2, 200...240 V, single phase</p> <p>18.76 lbf.in (2.12 N.m) LXM05BD17F1, 110...120 V, single phase</p> <p>18.76 lbf.in (2.12 N.m) LXM05BD28M2, 200...240 V, single phase</p> <p>18.76 lbf.in (2.12 N.m) LXM05CD17F1, 110...120 V, single phase</p> <p>18.76 lbf.in (2.12 N.m) LXM05CD28M2, 200...240 V, single phase</p> <p>18.76 lbf.in (2.12 N.m) LXM15LD17N4 6 A, 230 V, three phase</p> <p>18.76 lbf.in (2.12 N.m) LXM15LD21M3, 230 V, three phase</p> <p>18.76 lbf.in (2.12 N.m) LXM05AD42M3X, 200...240 V, three phase</p> <p>18.76 lbf.in (2.12 N.m) LXM05BD42M3X, 200...240 V, three phase</p> <p>18.76 lbf.in (2.12 N.m) LXM05CD42M3X, 200...240 V, three phase</p>
Peak stall torque	<p>54.0 lbf.in (6.1 N.m) LXM32.D30M2 10 A, 115 V, single phase</p> <p>63.7 lbf.in (7.2 N.m) LXM32.D18M2 6 A, 230 V, single phase</p> <p>36.64 lbf.in (4.14 N.m) LXM05AD17F1, 110...120 V, single phase</p> <p>36.64 lbf.in (4.14 N.m) LXM05AD17M2, 200...240 V, single phase</p> <p>36.64 lbf.in (4.14 N.m) LXM05BD17F1, 110...120 V, single phase</p> <p>36.64 lbf.in (4.14 N.m) LXM05BD17M2, 200...240 V, single phase</p> <p>36.64 lbf.in (4.14 N.m) LXM05CD17F1, 110...120 V, single phase</p> <p>36.64 lbf.in (4.14 N.m) LXM05CD17M2, 200...240 V, single phase</p> <p>60.2 lbf.in (6.8 N.m) LXM05AD28M2 6 A, 200...240 V, single phase</p> <p>60.2 lbf.in (6.8 N.m) LXM05BD28M2, 200...240 V, single phase</p> <p>60.2 lbf.in (6.8 N.m) LXM05CD28M2, 200...240 V, single phase</p> <p>39.56 lbf.in (4.47 N.m) LXM15LD17N4, 230 V, three phase</p> <p>48.24 lbf.in (5.45 N.m) LXM15LD21M3, 230 V, three phase</p> <p>60.2 lbf.in (6.8 N.m) LXM05AD42M3X, 200...240 V, three phase</p> <p>60.2 lbf.in (6.8 N.m) LXM05BD42M3X, 200...240 V, three phase</p> <p>60.2 lbf.in (6.8 N.m) LXM05CD42M3X, 200...240 V, three phase</p>
Nominal output power	<p>550 W LXM32.D30M2 10 A, 115 V, single phase</p> <p>600 W LXM05AD17M2, 200...240 V, single phase</p> <p>600 W LXM05BD17M2 6 A, 200...240 V, single phase</p> <p>600 W LXM05CD17M2, 200...240 V, single phase</p> <p>570 W LXM05AD17F1, 110...120 V, single phase</p> <p>570 W LXM05BD17F1, 110...120 V, single phase</p> <p>570 W LXM05CD17F1, 110...120 V, single phase</p> <p>600 W LXM05AD28M2, 200...240 V, single phase</p> <p>600 W LXM05BD28M2, 200...240 V, single phase</p> <p>600 W LXM05CD28M2, 200...240 V, single phase</p> <p>950 W LXM32.D18M2 6 A, 230 V, single phase</p> <p>1000 W LXM15LD17N4, 230 V, three phase</p> <p>1000 W LXM15LD21M3, 230 V, three phase</p> <p>600 W LXM05AD42M3X, 200...240 V, three phase</p> <p>600 W LXM05BD42M3X, 200...240 V, three phase</p> <p>600 W LXM05CD42M3X, 200...240 V, three phase</p>

Price is "List Price" and may be subject to a trade discount – check with your local distributor or retailer for actual price.

Nominal torque	<p>18.32 lbf.in (2.07 N.m) LXM32.D30M2 10 A, 115 V, single phase</p> <p>16.8 lbf.in (1.9 N.m) LXM05AD17M2, 200...240 V, single phase</p> <p>16.8 lbf.in (1.9 N.m) LXM05BD17M2 6 A, 200...240 V, single phase</p> <p>16.8 lbf.in (1.9 N.m) LXM05CD17M2, 200...240 V, single phase</p> <p>16.20 lbf.in (1.83 N.m) LXM05AD17F1, 110...120 V, single phase</p> <p>16.20 lbf.in (1.83 N.m) LXM05BD17F1, 110...120 V, single phase</p> <p>16.20 lbf.in (1.83 N.m) LXM05CD17F1, 110...120 V, single phase</p> <p>16.8 lbf.in (1.9 N.m) LXM05AD28M2, 200...240 V, single phase</p> <p>16.8 lbf.in (1.9 N.m) LXM05BD28M2, 200...240 V, single phase</p> <p>16.8 lbf.in (1.9 N.m) LXM05CD28M2, 200...240 V, single phase</p> <p>15.9 lbf.in (1.8 N.m) LXM32.D18M2 6 A, 230 V, single phase</p> <p>14.69 lbf.in (1.66 N.m) LXM15LD17N4, 230 V, three phase</p> <p>14.69 lbf.in (1.66 N.m) LXM15LD21M3, 230 V, three phase</p> <p>16.8 lbf.in (1.9 N.m) LXM05AD42M3X, 200...240 V, three phase</p> <p>16.8 lbf.in (1.9 N.m) LXM05BD42M3X, 200...240 V, three phase</p> <p>16.8 lbf.in (1.9 N.m) LXM05CD42M3X, 200...240 V, three phase</p>
-----------------------	--

Nominal speed	<p>2500 rpm LXM32.D30M2 10 A, 115 V, single phase</p> <p>3000 rpm LXM05AD17F1, 110...120 V, single phase</p> <p>3000 rpm LXM05BD17F1 6 A, 110...120 V, single phase</p> <p>3000 rpm LXM05CD17F1, 110...120 V, single phase</p> <p>3000 rpm LXM05AD17M2, 200...240 V, single phase</p> <p>3000 rpm LXM05BD17M2, 200...240 V, single phase</p> <p>3000 rpm LXM05CD17M2, 200...240 V, single phase</p> <p>3000 rpm LXM05AD28M2, 200...240 V, single phase</p> <p>3000 rpm LXM05BD28M2, 200...240 V, single phase</p> <p>3000 rpm LXM05CD28M2, 200...240 V, single phase</p> <p>5000 rpm LXM32.D18M2 6 A, 230 V, single phase</p> <p>3000 rpm LXM05AD42M3X, 200...240 V, three phase</p> <p>3000 rpm LXM05BD42M3X, 200...240 V, three phase</p> <p>3000 rpm LXM05CD42M3X, 200...240 V, three phase</p> <p>6000 rpm LXM15LD17N4, 230 V, three phase</p> <p>6000 rpm LXM15LD21M3, 230 V, three phase</p>
----------------------	--

Product compatibility	<p>LXM05AD17F1 110...120 V single phase</p> <p>LXM05AD17M2 200...240 V single phase</p> <p>LXM05AD28M2 200...240 V single phase</p> <p>LXM05BD17F1 110...120 V single phase</p> <p>LXM05BD17M2 200...240 V single phase</p> <p>LXM05BD28M2 200...240 V single phase</p> <p>LXM05CD17F1 110...120 V single phase</p> <p>LXM05CD17M2 200...240 V single phase</p> <p>LXM05CD28M2 200...240 V single phase</p> <p>LXM32.D30M2 115 V single phase</p> <p>LXM32.D18M2 230 V single phase</p> <p>LXM15LD21M3 230 V three phase</p> <p>LXM05AD42M3X 200...240 V three phase</p> <p>LXM05BD42M3X 200...240 V three phase</p> <p>LXM05CD42M3X 200...240 V three phase</p> <p>LXM15LD17N4 230 V three phase</p>
------------------------------	---

Shaft end	Untapped
------------------	----------

IP Degree of Protection	<p>IP65 standard</p> <p>IP67 with IP67 kit</p>
--------------------------------	--

Speed feedback resolution	131072 points/turn x 4096 turns
----------------------------------	---------------------------------

Holding brake	Without
----------------------	---------

Mounting Support	International standard flange
-------------------------	-------------------------------

Electrical Connection	Rotatable right-angled connectors
------------------------------	-----------------------------------

Complementary

Range Compatibility	<p>Lexium 05</p> <p>Lexium 15</p> <p>Lexium 32</p>
----------------------------	--

supply voltage max	480 V
---------------------------	-------

Phase	Three phase
--------------	-------------

Continuous stall current	4.9 A
---------------------------------	-------

maximum continuous power	1.51 W
---------------------------------	--------

Maximum current Irms	20.6 A LXM15LD21M3
	20.6 A LXM15LD17N4
	19.9 A LXM05AD17F1
	19.9 A LXM05AD17M2
	19.9 A LXM05AD28M2
	19.9 A LXM05AD42M3X
	19.9 A LXM05BD17F1
	19.9 A LXM05BD17M2
	19.9 A LXM05BD28M2
	19.9 A LXM05BD42M3X
	19.9 A LXM05CD17F1
	19.9 A LXM05CD17M2
	19.9 A LXM05CD28M2
	19.9 A LXM05CD42M3X
	15 A LXM32.D30M2
18 A LXM32.D18M2	
Maximum permanent current	19.9 A
Switching frequency	8 kHz
Second shaft	Without second shaft end
Shaft diameter	0.4 in (11 mm)
Shaft length	0.9 in (23 mm)
Feedback type	Multiturn SinCos Hiperface
Motor flange size	2.8 in (70 mm)
Number of motor stacks	2
Torque constant	0.45 N.m/A 248 °F (120 °C)
Back emf constant	28 V/krpm 248 °F (120 °C)
Number of motor poles	3.0
Rotor inertia	0.41 kg.cm ²
Stator resistance	1.5 Ohm 68 °F (20 °C)
Stator inductance	3.75 mH 68 °F (20 °C)
Stator electrical time constant	4.47 ms 68 °F (20 °C)
Maximum radial force Fr	390 N 6000 rpm
	410 N 5000 rpm
	450 N 4000 rpm
	490 N 3000 rpm
	560 N 2000 rpm
	710 N 1000 rpm
Maximum axial force Fa	0.2 x Fr
Type of cooling	Natural convection
Length	7.4 in (187 mm)
Centring collar diameter	2.4 in (60 mm)
Centring collar depth	0.10 in (2.5 mm)
Number of mounting holes	4
Mounting holes diameter	0.2 in (5.5 mm)
Circle diameter of the mounting holes	3.2 in (82 mm)
Net Weight	6.37 lb(US) (2.89 kg)
Sizing reference	BSH0702T
Network number of phases	3
Accuracy error [angular]	1.4 °
Temperature copper hot	248 °F (120 °C)

Temperature magnet hot	212 °F (100 °C)
Temperature magnet rt	68 °F (20 °C)
Output current 3s peak	19.9 A
Inertia	0.0 kg.cm ² of brake 0.41 kg.cm ² of motor

Ordering and shipping details

Category	18282-LEXIUM 32 MOTORS
Discount Schedule	PC53
GTIN	3389118136694
Returnability	No
Country of origin	DE

Packing Units

Unit Type of Package 1	PCE
Nbr. of units in pkg.	1
Package 1 Height	4.8 in (12.3 cm)
Package 1 Width	5.04 in (12.8 cm)
Package 1 Length	14.8 in (37.7 cm)
Package weight(Lbs)	6.2 lb(US) (2.8 kg)

Contractual warranty

Warranty (in months)	18
----------------------	----



Environmental Data

Schneider Electric aims to achieve Net Zero status by 2050 through supply chain partnerships, lower impact materials, and circularity via our ongoing “Use Better, Use Longer, Use Again” campaign to extend product lifetimes and recyclability.

[Environmental Data explained >](#)

[How we assess product sustainability >](#)



Environmental footprint

Total lifecycle Carbon footprint	1 103 kg CO2 eq.
Carbon footprint of the manufacturing phase [A1 to A3]	12 kg CO2 eq.
Carbon footprint of the distribution phase [A4]	0.4 kg CO2 eq.
Carbon footprint of the installation phase [A5]	0 kg CO2 eq.
Carbon footprint of the use phase [B2, B3, B4, B6]	1 090 kg CO2 eq.
Carbon footprint of the end-of-life phase [C1 to C4]	0.3 kg CO2 eq.

Use Better



Materials and Substances

Packaging made with recycled cardboard	Yes
Packaging without single use plastic	No
EU RoHS Directive	Pro-active compliance (Product out of EU RoHS legal scope)
SCIP Number	8c11b0c9-e501-4810-83eb-05fc6605ede4
REACH Regulation	REACH Declaration
California proposition 65	WARNING: This product can expose you to chemicals including: Lead and lead compounds, which is known to the State of California to cause cancer and birth defects or other reproductive harm. For more information go to www.P65Warnings.ca.gov

Use Longer



Lifetime extension

Repair	No
--------	----

Use Again



Repack and remanufacture

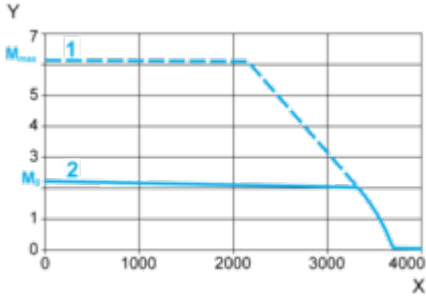
Circularity Profile	No need of specific recycling operations
Take-back	No

Performance Curves

115 V Single-Phase Supply Voltage

Torque/Speed Curves

Servo motor with LXM32•D30M2 servo drive



X Speed in rpm

Y Torque in Nm

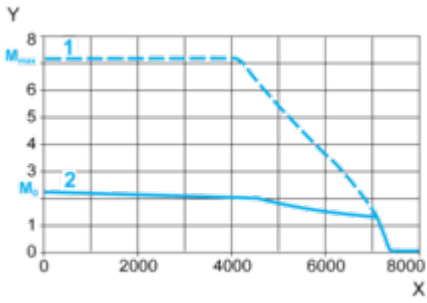
1 Peak torque

2 Continuous torque

230 V Single-Phase Supply Voltage

Torque/Speed Curves

Servo motor with LXM32•D18M2 servo drive



X Speed in rpm

Y Torque in Nm

1 Peak torque

2 Continuous torque