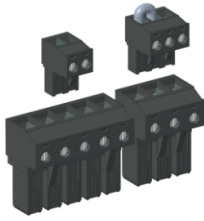


# Product data sheet

Specifications



## connection module, Lexium MC12, connector kit

LXMMCACMCS1S100

**Product availability: Non-Stock - Not normally stocked in  
distribution facility**

### Main

Range of Product	Lexium MC12 multi carrier
Accessory / separate part designation	Connection module
Accessory / Separate Part Type	Connector
Accessory / separate part category	Connection accessories
Accessory / separate part destination	Longstator motor

### Ordering and shipping details

Category	US1PC5218357
Discount Schedule	PC52
GTIN	3606482085336
Returnability	No
Country of origin	DE

### Packing Units

Unit Type of Package 1	PCE
Nbr. of units in pkg.	1
Package 1 Height	1.299 in (3.300 cm)
Package 1 Width	2.913 in (7.400 cm)
Package 1 Length	4.055 in (10.300 cm)
Package weight(Lbs)	1.411 oz (40.000 g)

### Contractual warranty

Warranty (in months)	18
----------------------	----

Price is "List Price" and may be subject to a trade discount – check with your local distributor or retailer for actual price.



## Environmental Data

Schneider Electric aims to achieve Net Zero status by 2050 through supply chain partnerships, lower impact materials, and circularity via our ongoing “Use Better, Use Longer, Use Again” campaign to extend product lifetimes and recyclability.

[Environmental Data explained >](#)

[How we assess product sustainability >](#)

### Use Better

<b>Materials and Substances</b>	
Packaging made with recycled cardboard	Yes
Packaging without single use plastic	Yes
<a href="#">EU RoHS Directive</a>	Compliant with Exemptions
REACH Regulation	<a href="#">REACH Declaration</a>
PVC free	Yes

### Use Longer

<b>Lifetime extension</b>	
Repair	No

### Use Again

<b>Repack and remanufacture</b>	
Take-back	No

Offer Marketing Illustration

Product benefits / Features

---

The infographic features a central 3D rendering of a Lexium MC12 terminal block. It is surrounded by four circular icons, each with a corresponding benefit text block. The background is a solid green color.

### Benefits Lexium™ MC12

- Icon: Gear and lightning bolt**  
Increase machine performance and flexibility by up to 50%  
Increase your productivity and flexibility with a cost-effective, efficient, and wide range of products to choose from.
- Icon: Document with checkmark**  
Reduce your time to market by up to 30% with improved design speed and design quality of your machines.
- Icon: Clock**  
Achieve faster changeover time by a simple virtual commissioning and mechanical installation without any special tools.
- Icon: Magnifying glass over graph**  
Increase OEE of the machines  
Get faster, flexible machines with less maintenance and a higher level of diagnostics.

Image of product / Alternate images

Alternative

---

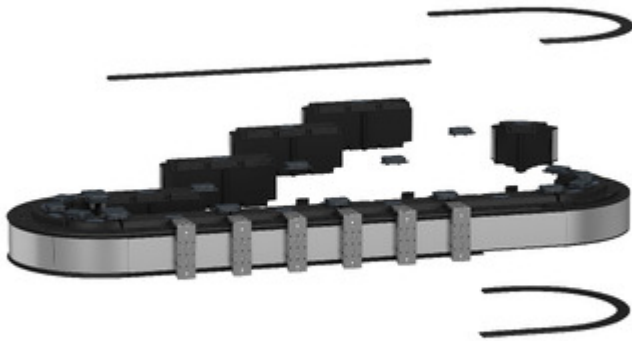


Image of product in real life situation

