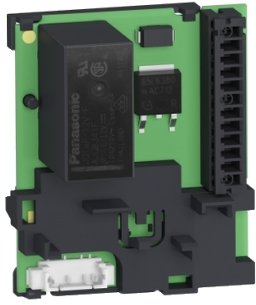


# Product datasheet

Specifications



## ESM module, MasterPact MTZ1/ MTZ2/MTZ3 fixed, for ERMS switch module

LV836300

### Main

Range	MasterPact
Device short name	ESM
Product or component type	I/O expansion module
Device application	Safety logic controller
Application program desc	ERMS
Range compatibility	Masterpact MasterPact MTZ1 Masterpact MasterPact MTZ2 Masterpact MasterPact MTZ3
Signal contacts composition	1 NO

### Complementary

[Ie] rated operational current	3 A at 110 V AC 3 A at 24 V DC
Minimum load	10 mA at 5 V DC

### Packing Units

Unit Type of Package 1	PCE
Number of Units in Package 1	1
Package 1 Height	4.500 cm
Package 1 Width	5.000 cm
Package 1 Length	8.200 cm
Package 1 Weight	32.000 g
Unit Type of Package 2	S02
Number of Units in Package 2	61
Package 2 Height	15.000 cm
Package 2 Width	30.000 cm
Package 2 Length	40.000 cm
Package 2 Weight	2.252 kg

### Contractual warranty

Warranty (in months)	18
----------------------	----



## Environmental Data

Schneider Electric aims to achieve Net Zero status by 2050 through supply chain partnerships, lower impact materials, and circularity via our ongoing “Use Better, Use Longer, Use Again” campaign to extend product lifetimes and recyclability.

[Environmental Data explained >](#)

[How we assess product sustainability >](#)

### Use Better



#### Materials and Substances

Packaging made with recycled cardboard	Yes
Packaging without single use plastic	Yes
SCIP Number	687114de-dddc-4082-9532-6a95c8326b32
EU RoHS Directive	<a href="#">Compliant By Exemption</a>
REACH Regulation	<a href="#">Reference contains Substances of Very High Concern above the threshold</a>
Halogen-free status	Product contains halogen above thresholds

### Use Longer




#### Lifetime extension

Repair	No
--------	----

### Use Again



#### Repack and remanufacture

Take-back	No
WEEE Label	 The product must be disposed on European Union markets following specific waste collection and never end up in rubbish bins