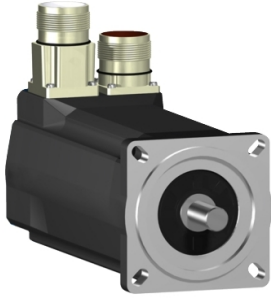


# Product data sheet

Specifications



## SH3 servomotor, 70mm, 2 stacks, high Torque, smooth Shaft, SinCos Singleturn 128, no Brake, straight, IP54/65

SH30702M01A1000

! Discontinued

! Discontinued on: Jul 23, 2025

! End-of-service on: Dec 31, 2025

### Main

Range compatibility	PacDrive 3
Device short name	SH3
Product or component type	Servo motor

### Complementary

Maximum mechanical speed	8000 rpm
[Us] rated supply voltage	115...480 V
Network number of phases	Three phase
Continuous stall current	1.5 A
Continuous stall torque	18.06 lbf.in (2.04 N.m) 115...480 V three phase
Continuous power	640 W
Peak stall torque	67.3 lbf.in (7.6 N.m) 115...480 V three phase
Nominal output power	700 W 115 V single phase 340 W 230 V single phase 660 W 400 V three phase 780 W 480 V three phase
Nominal torque	19.5 lbf.in (2.2 N.m) 115 V single phase 19.03 lbf.in (2.15 N.m) 230 V single phase 17.97 lbf.in (2.03 N.m) 400 V three phase 17.97 lbf.in (2.03 N.m) 480 V three phase
Nominal speed	750 rpm 115 V single phase 1500 rpm 230 V single phase 3000 rpm 400 V three phase 3600 rpm 480 V three phase
Maximum current Irms	6.0 A
Shaft end	Smooth shaft
Shaft diameter	0.4 in (11 mm)
Shaft length	0.9 in (23 mm)
Key width	0.2 in (4 mm)
IP degree of protection	IP54 shaft bushing without shaft seal ring: conforming to IEC 60034-5 IP65 motor: conforming to IEC 60034-5 IP65 shaft bushing: conforming to IEC 60034-5
Encoder type	Absolute single turn SinCos Hiperface
Speed feedback resolution	128 periods

<b>Holding brake</b>	Without
<b>Mounting support</b>	International standard flange
<b>Motor flange size</b>	2.8 in (70 mm)
<b>Electrical connection</b>	Rotatable right angled connector
<b>Torque constant</b>	1.36 N.m/A 248 °F (120 °C)
<b>Back emf constant</b>	95.9 V/krpm 68 °F (20 °C)
<b>Number of motor poles</b>	3
<b>Rotor inertia</b>	0.41 kg.cm <sup>2</sup>
<b>Stator resistance</b>	16.4 Ohm
<b>Stator inductance</b>	41.55 mH
<b>Maximum radial force Fr</b>	710 N 1000 rpm 560 N 2000 rpm 490 N 3000 rpm 450 N 4000 rpm 410 N 5000 rpm 390 N 6000 rpm
<b>Maximum axial force Fa</b>	80 N
<b>Type of cooling</b>	Natural convection
<b>Length</b>	7.4 in (187 mm)
<b>Centring collar diameter</b>	2.4 in (60 mm)
<b>Centring collar depth</b>	0.10 in (2.5 mm)
<b>Number of mounting holes</b>	4
<b>Mounting holes diameter</b>	0.2 in (5.5 mm)
<b>Circle diameter of the mounting holes</b>	3.2 in (82 mm)
<b>Net weight</b>	6.2 lb(US) (2.8 kg)
<b>Sizing reference</b>	SH30702M
<b>Network number of phases</b>	3
<b>Temperature copper hot</b>	266 °F (130 °C)
<b>Electrical connection</b>	straight connector
<b>Output current 3s peak</b>	6.0 A
<b>Inertia</b>	0.0 kg.cm <sup>2</sup> of brake 0.41 kg.cm <sup>2</sup> of motor

## Packing Units

<b>Unit Type of Package 1</b>	PCE
<b>Number of Units in Package 1</b>	1

## Contractual warranty

<b>Warranty (in months)</b>	18
-----------------------------	----



## Environmental Data

Schneider Electric aims to achieve Net Zero status by 2050 through supply chain partnerships, lower impact materials, and circularity via our ongoing “Use Better, Use Longer, Use Again” campaign to extend product lifetimes and recyclability.

[Environmental Data explained >](#)

[How we assess product sustainability >](#)

### Use Better



#### Materials and Substances

Packaging made with recycled cardboard **Yes**

Packaging without single use plastic **No**

### Use Longer



#### Lifetime extension

Repair **No**

### Use Again



#### Repack and remanufacture

Take-back **Nej**