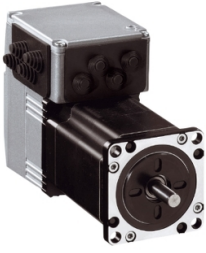


Product data sheet

Specifications



LEXIUM INTEGRATED DRIVE, STEPPER MOTOR,

ILS1B853S1488

⚠ Discontinued on: Jul 12, 2021

⚠ End-of-service on: Aug 2, 2021

⚠ Discontinued

Packing Units

Unit Type of Package 1	PCE
Number of Units in Package 1	1
Package 1 Height	4.1 in (10.5 cm)
Package 1 Width	7.5 in (19 cm)
Package 1 Length	15.4 in (39 cm)
Package 1 Weight	11.2 lb(US) (5.1 kg)

Disclaimer: This documentation is not intended as a substitute for and is not to be used for determining suitability or reliability of these products for specific user applications



Environmental Data

Schneider Electric aims to achieve Net Zero status by 2050 through supply chain partnerships, lower impact materials, and circularity via our ongoing “Use Better, Use Longer, Use Again” campaign to extend product lifetimes and recyclability.

[Environmental Data explained >](#)

[How we assess product sustainability >](#)

Use Longer



Lifetime extension

Repair

No