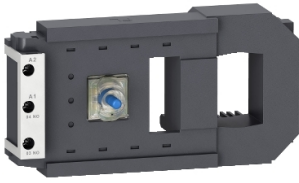


# Product datasheet

Specifications



## TeSys F - specific contactor coil - 550 V AC 40...400 Hz low consumption

LX9FG550

⚠ Discontinued on: 4 Aug 2021

⚠ To be end-of-service on: 31 Dec 2028

⚠ Discontinued

EAN Code: 3389118112384

## Main

Range	TeSys
Product or component type	Specific contactor coil
Device short name	LX9FG
Range compatibility	TeSys TeSys F LC1F contactor
Product compatibility	LC1F185 LC1F225
Control circuit type	AC at 40...400 Hz low consumption
[Uc] control circuit voltage	550 V AC 40...400 Hz
Inductance of closed circuit	26.3 H
Average resistance	194 Ohm inrush at 20 °C 7550 Ohm holding at 20 °C
Operating time	130 ms opening 35 ms closing
Mechanical durability	10 Mcycles
Maximum operating rate	2400 cyc/h 55 °C

## Complementary

Coil technology	Without built-in suppressor module
Control circuit voltage limits	Operational: 0.85...1.1 Uc (at 55 °C) Drop-out: 0.2...0.55 Uc (at 55 °C)
Inrush power in VA	950...1180 VA 40...400 Hz (at 20 °C)
Hold-in power consumption in VA	8.9...10.9 VA 40...400 Hz (at 20 °C)
Heat dissipation	8...9.8 W

## Environment

Ambient air temperature for operation	-5...55 °C
Net weight	0.55 kg

## Packing Units

Unit Type of Package 1	PCE
Number of Units in Package 1	1
Package 1 Height	6.200 cm

Package 1 Width	7.900 cm
Package 1 Length	16.600 cm
Package 1 Weight	550.000 g
Unit Type of Package 2	S03
Number of Units in Package 2	18
Package 2 Height	30.000 cm
Package 2 Width	30.000 cm
Package 2 Length	40.000 cm
Package 2 Weight	10.613 kg

## Contractual warranty

Warranty (in months)	18
----------------------	----



## Environmental Data

Schneider Electric aims to achieve Net Zero status by 2050 through supply chain partnerships, lower impact materials, and circularity via our ongoing “Use Better, Use Longer, Use Again” campaign to extend product lifetimes and recyclability.

[Environmental Data explained >](#)

[How we assess product sustainability >](#)



### Environmental footprint

Total lifecycle Carbon footprint	70 kg CO2 eq.
Carbon footprint of the manufacturing phase [A1 to A3]	0.9 kg CO2 eq.
Carbon footprint of the distribution phase [A4]	0 kg CO2 eq.
Carbon footprint of the installation phase [A5]	0 kg CO2 eq.
Carbon footprint of the use phase [B2, B3, B4, B6]	69 kg CO2 eq.
Carbon footprint of the end-of-life phase [C1 to C4]	0.3 kg CO2 eq.
Environmental Disclosure	<a href="#">Product Environmental Profile</a>

## Use Better



### Materials and Substances

Packaging made with recycled cardboard	Yes
Packaging without single use plastic	Yes
SCIP Number	975ba4d0-bc82-40e2-8faa-6f6819f63b0c
EU RoHS Directive	<a href="#">Compliant By Exemption</a>
REACH Regulation	<a href="#">Reference contains Substances of Very High Concern above the threshold</a>

## Use Longer




### Lifetime extension

Repair	No
--------	----

## Use Again



### Repack and remanufacture

Recyclability potential, in %	95
End of life manual availability	<a href="#">End of Life Information</a>
Take-back	No
WEEE Label	 The product must be disposed on European Union markets following specific waste collection and never end up in rubbish bins