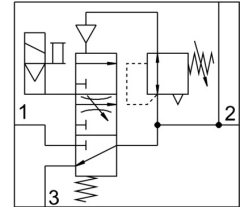


Soft-start valve MS4-EDE-1/4-V24-B

Part number: 8080815

FESTO



Data sheet

Feature	Value
Size	4
Grid dimension	40 mm
Exhaust-air function	Without flow control option
Type of actuation	Electric
Mounting position	Vertical +/-5°
Series	MS
Manual override	Detenting Non-detenting
Design	Poppet valve, electrically actuated
Type of reset	Mechanical spring
Type of piloting	Pilot actuated
Pilot air supply	Internal
Symbol	00993648
Valve function	3/2-way, closed, monostable
Switching position indicator	With accessories
Operating pressure	0.3 MPa ... 0.7 MPa
Operating pressure	3 bar ... 7 bar
b value	0.45
C value	8.52 l/sbar
Standard nominal flow rate, exhaust 0.6->0 MPa (6->0 bar, 87->0 psi)	>1600 l/min
Standard nominal flow rate	2000 l/min
Switch-on time	31 ms
Characteristic coil data	24 V DC: 2.3 W
Permissible voltage fluctuations	+/- 10 %
Operating medium	Compressed air to ISO 8573-1:2010 [7:4:4]
Corrosion resistance class CRC	1 - Low corrosion stress
PWIS conformity	VDMA24364-B1/B2-L
Storage temperature	-10 °C ... 60 °C
Media temperature	-5 °C ... 50 °C
Degree of protection	IP65
Ambient temperature	-5 °C ... 50 °C
Product weight	196 g
Electrical connection	Type C To EN 175301-803
Signal status display	With accessories

Feature	Value
Type of mounting	Via wall/surface bracket
Pneumatic connection, port 1	G1/4
Pneumatic connection, port 2	G1/4
Pneumatic connection, port 3	G1/4
Note on materials	RoHS-compliant
Material seals	HNBR NBR
Material housing	PA-reinforced