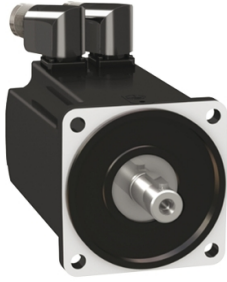


Product datasheet

Specifications



MH3 servomotor, 100mm, 1 stack, keyed Shaft, SinCos Singleturn 16, no Brake, angular, IP65

MH31001P16A2200

⚠ Discontinued on: 9 Feb 2023

⚠ Discontinued

Main

Range compatibility	PacDrive 3
Device short name	MH3
Product or component type	Servo motor

Complementary

Maximum mechanical speed	6000 rpm
[Us] rated supply voltage	115...480 V
Network number of phases	Three phase
Continuous stall current	3.15 A
Continuous stall torque	3.4 N.m, 115...480 V, three phase
Continuous power	1520 W
Peak stall torque	10.8 N.m, 115...480 V, three phase
Nominal output power	0.35 W, 115 V 0.67 W, 230 V 1.26 W, 400 V 1.52 W, 480 V
Nominal torque	3.3 N.m for LXM52 at 3.07 mA, 115 V, three phase 3.2 N.m for LXM52 at 2.99 mA, 230 V, single phase 3 N.m for LXM52 at 2.83 mA, 400 V, three phase 2.9 N.m for LXM52 at 2.75 mA, 480 V, three phase 3.3 N.m for LXM62 at 3.07 mA, 115 V, single phase 3.2 N.m for LXM62 at 2.99 mA, 230 V, single phase 3 N.m for LXM62 at 2.83 mA, 400 V, three phase 2.9 N.m for LXM62 at 2.75 mA, 480 V, three phase
Nominal speed	1000 rpm for LXM52 at 3.07 mA, 115 V, single phase 2000 rpm for LXM52 at 2.99 mA, 230 V, single phase 4000 rpm for LXM52 at 2.83 mA, 400 V, three phase 5000 rpm for LXM52 at 2.75 mA, 480 V, three phase 1000 rpm for LXM62 at 3.07 mA, 115 V, single phase 2000 rpm for LXM62 at 2.99 mA, 230 V, single phase 4000 rpm for LXM62 at 2.83 mA, 400 V, three phase 5000 rpm for LXM62 at 2.75 mA, 480 V, three phase
Maximum current Irms	10.68 A
Shaft end	Parallel key
Second shaft	Without second shaft end
Shaft diameter	19 mm
Shaft length	40 mm
Key width	6 mm
IP degree of protection	IP65 standard

Encoder type	Single turn SinCos Hiperface
Speed feedback resolution	16 periods
Holding brake	Without
Mounting support	International standard flange
Motor flange size	100 mm
Electrical connection	Rotatable right-angled connectors
Torque constant	1.09 N.m/A at 120 °C
Back emf constant	70.3 V/krpm
Number of motor poles	10
Rotor inertia	3.19 kg.cm ²
Stator resistance	4.12 Ohm
Stator inductance	14.9 mH
Stator electrical time constant	4.5 ms
Maximum radial force Fr	900 N at 1000 rpm 720 N at 2000 rpm 630 N at 3000 rpm 570 N at 4000 rpm 530 N at 5000 rpm
Type of cooling	Natural convection
Length	128.6 mm
Centring collar diameter	95 mm
Centring collar depth	3.5 mm
Number of mounting holes	4
Mounting holes diameter	9 mm
Circle diameter of the mounting holes	115 mm
Net weight	3.34 kg
Sizing reference	MH31001P
Temperature copper hot	135 °C

Packing Units

Unit Type of Package 1	PCE
Number of Units in Package 1	1
Package 1 Height	21.0 cm
Package 1 Width	18.0 cm
Package 1 Length	35.6 cm
Package 1 Weight	4.04 kg

Contractual warranty

Warranty (in months)	18
-----------------------------	----



Environmental Data

Schneider Electric aims to achieve Net Zero status by 2050 through supply chain partnerships, lower impact materials, and circularity via our ongoing “Use Better, Use Longer, Use Again” campaign to extend product lifetimes and recyclability.

[Environmental Data explained >](#)

[How we assess product sustainability >](#)

Use Better



Materials and Substances

PVC free

Yes

Use Longer



Lifetime extension

Repair

No

Use Again



Repack and remanufacture

End of life manual availability

No need of specific recycling operations