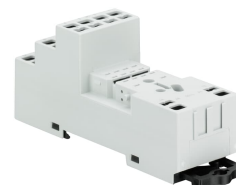


CR-M2LC



CR-M2LC Logical socket for 2c/o CR-M relay

General Information

Extended Product Type	CR-M2LC
Product ID	1SVR405651R1200
EAN	4013614528637
Catalog Description	CR-M2LC Logical socket for 2c/o CR-M relay
Long Description	The CR-M2LC socket is from the CR-M (miniature) relay range. The logical socket is suitable for CR-M relays with 2 c/o (SPDT) output contacts. The socket has spring connection terminals. Pluggable function modules, holder and marker are available as accessories.

Ordering

Minimum Order Quantity	10 piece
Customs Tariff Number	85366990

Popular Downloads

Data Sheet, Technical Information	2CDC117005D0204
Instructions and Manuals	1SVC405650M9030

Dimensions

Product Net Width	31 mm
Product Net Height	42.5 mm
Product Net Depth / Length	95 mm
Product Net Weight	0.065 kg

Technical

Function	Accessory for interface relays CR-M
Sub-Function	Socket for miniature relays
Sub-Function 2	Logical socket for miniature relay 2 c/o
Output	none
Output Signal	none
Terminal Type	Spring Terminals

Environmental

RoHS Status

Following EU Directive 2011/65/EU

Certificates and Declarations (Document Number)

CSA Certificate	CSA_262671-2785566
cURus Certificate	cURus508_E244328
Declaration of Conformity - CE	1SVD982020-0001
EAC Certificate	EAC_RU_C-PL.ME77.B.01873
Environmental Information	1SAA981009-2401
Instructions and Manuals	1SVC405650M9030
RoHS Information	1SVD982020-0001

Container Information

Package Level 1 Units	10 piece
Package Level 1 Width	160 mm
Package Level 1 Height	105 mm
Package Level 1 Depth / Length	75 mm
Package Level 1 Gross Weight	0.652 kg
Package Level 1 EAN	4013614380181

Classifications

Object Classification Code	K
ETIM 4	EC001456 - Relay socket
ETIM 5	EC001456 - Relay socket
ETIM 6	EC001456 - Relay socket
ETIM 7	EC001456 - Relay socket
eClass	7.0 27371603
UNSPSC	39121516

Categories

Low Voltage Products and Systems → Control Products → Electronic Relays and Controls → Interface Relays and Optocouplers

