

# Product datasheet

Specifications



## Contactors, TeSys Deca, 4P(2NO+2NC), AC-1, <=440V, 25A, 440VDC coil, screw clamp terminal

LC1D128RD

⚠ Discontinued on: 1 Dec 2024

⚠ To be discontinued

### Main

Range of product	TeSys Deca
Product or component type	Contactors
Device short name	LC1D
Contactors application	Resistive load
Utilisation category	AC-1
Poles description	4P
[Ue] rated operational voltage	Power circuit: <= 690 V AC 25...400 Hz Power circuit: <= 300 V DC
[Ie] rated operational current	25 A (at <60 °C) at <= 440 V AC AC-1 for power circuit
[Uc] control circuit voltage	440 V DC

### Complementary

Compatibility code	LC1D
Pole contact composition	2 NO + 2 NC
Protective cover	With
[Ith] conventional free air thermal current	25 A (at 60 °C) for power circuit 10 A (at 60 °C) for signalling circuit
Irms rated making capacity	250 A at 440 V for power circuit conforming to IEC 60947 140 A AC for signalling circuit conforming to IEC 60947-5-1 250 A DC for signalling circuit conforming to IEC 60947-5-1
Rated breaking capacity	250 A at 440 V for power circuit conforming to IEC 60947
[Icw] rated short-time withstand current	105 A 40 °C - 10 s for power circuit 210 A 40 °C - 1 s for power circuit 30 A 40 °C - 10 min for power circuit 61 A 40 °C - 1 min for power circuit 100 A - 1 s for signalling circuit 120 A - 500 ms for signalling circuit 140 A - 100 ms for signalling circuit
Associated fuse rating	10 A gG for signalling circuit conforming to IEC 60947-5-1 40 A gG at <= 690 V coordination type 1 for power circuit 25 A gG at <= 690 V coordination type 2 for power circuit
Average impedance	2.5 mOhm - Ith 25 A 50 Hz for power circuit
Power dissipation per pole	1.56 W AC-1
[Ui] rated insulation voltage	Power circuit: 690 V conforming to IEC 60947-4-1 Power circuit: 600 V CSA certified Power circuit: 600 V UL certified Signalling circuit: 690 V conforming to IEC 60947-1 Signalling circuit: 600 V CSA certified Signalling circuit: 600 V UL certified

Excluding VAT, FCA Jabal Ali & are subject to change – check with your local distributor.

<b>Overvoltage category</b>	III
<b>Pollution degree</b>	3
<b>[Uimp] rated impulse withstand voltage</b>	6 kV conforming to IEC 60947
<b>Safety reliability level</b>	B10d = 1369863 cycles contactor with nominal load conforming to EN/ISO 13849-1 B10d = 20000000 cycles contactor with mechanical load conforming to EN/ISO 13849-1
<b>Mechanical durability</b>	30 Mcycles
<b>Electrical durability</b>	0.8 Mcycles 25 A AC-1 at Ue ≤ 440 V
<b>Control circuit type</b>	DC standard
<b>Coil technology</b>	With integral suppression device
<b>Control circuit voltage limits</b>	0.1...0.25 Uc (-40...70 °C):drop-out DC 0.7...1.25 Uc (-40...60 °C):operational DC 1...1.25 Uc (60...70 °C):operational DC
<b>Inrush power in W</b>	5.4 W (at 20 °C)
<b>Hold-in power consumption in W</b>	5.4 W at 20 °C
<b>Operating time</b>	63 ±15 % ms closing 20 ±20 % ms opening
<b>Time constant</b>	28 ms
<b>Maximum operating rate</b>	3600 cyc/h at 60 °C
<b>Connections - terminals</b>	Power circuit: screw clamp terminals 1 1...4 mm <sup>2</sup> - cable stiffness: flexible without cable end Power circuit: screw clamp terminals 2 1...4 mm <sup>2</sup> - cable stiffness: flexible without cable end Power circuit: screw clamp terminals 1 1...4 mm <sup>2</sup> - cable stiffness: flexible with cable end Power circuit: screw clamp terminals 2 1...2.5 mm <sup>2</sup> - cable stiffness: flexible with cable end Power circuit: screw clamp terminals 1 1...4 mm <sup>2</sup> - cable stiffness: solid without cable end Power circuit: screw clamp terminals 2 1...4 mm <sup>2</sup> - cable stiffness: solid without cable end Control circuit: screw clamp terminals 1 1...4 mm <sup>2</sup> - cable stiffness: flexible without cable end Control circuit: screw clamp terminals 2 1...4 mm <sup>2</sup> - cable stiffness: flexible without cable end Control circuit: screw clamp terminals 1 1...4 mm <sup>2</sup> - cable stiffness: flexible with cable end Control circuit: screw clamp terminals 2 1...2.5 mm <sup>2</sup> - cable stiffness: flexible with cable end Control circuit: screw clamp terminals 1 1...4 mm <sup>2</sup> - cable stiffness: solid without cable end Control circuit: screw clamp terminals 2 1...4 mm <sup>2</sup> - cable stiffness: solid without cable end
<b>Tightening torque</b>	Power circuit: 1.7 N.m - on screw clamp terminals - with screwdriver flat Ø 6 mm Power circuit: 1.7 N.m - on screw clamp terminals - with screwdriver Philips No 2 Control circuit: 1.7 N.m - on screw clamp terminals - with screwdriver flat Ø 6 mm Control circuit: 1.7 N.m - on screw clamp terminals - with screwdriver Philips No 2 Control circuit: 1.7 N.m - on screw clamp terminals - with screwdriver pozidriv No 2 Power circuit: 1.7 N.m - on screw clamp terminals - with screwdriver pozidriv No 2
<b>Auxiliary contact composition</b>	1 NO + 1 NC
<b>Auxiliary contacts type</b>	type mechanically linked 1 NO + 1 NC conforming to IEC 60947-5-1 type mirror contact 1 NC conforming to IEC 60947-4-1
<b>Signalling circuit frequency</b>	25...400 Hz
<b>Minimum switching voltage</b>	17 V for signalling circuit
<b>Minimum switching current</b>	5 mA for signalling circuit
<b>Insulation resistance</b>	> 10 MOhm for signalling circuit
<b>Non-overlap time</b>	1.5 ms on de-energisation between NC and NO contact 1.5 ms on energisation between NC and NO contact

<b>Mounting support</b>	Rail Plate
-------------------------	---------------

## Environment

<b>Standards</b>	CSA C22.2 No 14 EN 60947-4-1 EN 60947-5-1 IEC 60947-4-1 IEC 60947-5-1 UL 60947-4-1 IEC 60335-1:Clause 30.2 IEC 60335-2-40:Annex JJ UL 60335-2-40:Annex JJ CSA C22.2 No 60947-4-1
------------------	---

<b>Product certifications</b>	UL CCC CSA Marine UKCA EAC CB Scheme
-------------------------------	--

<b>IP degree of protection</b>	IP20 front face conforming to IEC 60529
--------------------------------	---

<b>Protective treatment</b>	TH conforming to IEC 60068-2-30
-----------------------------	---------------------------------

<b>Climatic withstand</b>	conforming to IACS E10 exposure to damp heat conforming to IEC 60947-1 Annex Q category D exposure to damp heat
---------------------------	--

<b>Permissible ambient air temperature around the device</b>	-40...60 °C 60...70 °C with derating
--	---

<b>Operating altitude</b>	0...3000 m
---------------------------	------------

<b>Fire resistance</b>	850 °C conforming to IEC 60695-2-1
------------------------	------------------------------------

<b>Flame retardance</b>	V1 conforming to UL 94
-------------------------	------------------------

<b>Mechanical robustness</b>	Vibrations contactor open (2 Gn, 5...300 Hz) Vibrations contactor closed (4 Gn, 5...300 Hz) Shocks contactor open (10 Gn for 11 ms) Shocks contactor closed (15 Gn for 11 ms)
------------------------------	--

<b>Height</b>	85 mm
---------------	-------

<b>Width</b>	45 mm
--------------	-------

<b>Depth</b>	99 mm
--------------	-------

<b>Net weight</b>	0.525 kg
-------------------	----------

## Packing Units

<b>Unit Type of Package 1</b>	PCE
-------------------------------	-----

<b>Number of Units in Package 1</b>	1
-------------------------------------	---

<b>Package 1 Height</b>	5.700 cm
-------------------------	----------

<b>Package 1 Width</b>	9.700 cm
------------------------	----------

<b>Package 1 Length</b>	12.000 cm
-------------------------	-----------

<b>Package 1 Weight</b>	522.000 g
-------------------------	-----------

## Contractual warranty

<b>Warranty (in months)</b>	18
-----------------------------	----



## Environmental Data

Schneider Electric aims to achieve Net Zero status by 2050 through supply chain partnerships, lower impact materials, and circularity via our ongoing “Use Better, Use Longer, Use Again” campaign to extend product lifetimes and recyclability.

[Environmental Data explained >](#)

[How we assess product sustainability >](#)



### Environmental footprint

Total lifecycle Carbon footprint	45 kg CO2 eq.
Carbon footprint of the manufacturing phase [A1 to A3]	3 kg CO2 eq.
Carbon footprint of the distribution phase [A4]	0.1 kg CO2 eq.
Carbon footprint of the installation phase [A5]	0 kg CO2 eq.
Carbon footprint of the use phase [B2, B3, B4, B6]	41 kg CO2 eq.
Carbon footprint of the end-of-life phase [C1 to C4]	1 kg CO2 eq.
Environmental Disclosure	<a href="#">Product Environmental Profile</a>

### Use Better



### Materials and Substances

Packaging made with recycled cardboard	Yes
Packaging without single use plastic	Yes
SCIP Number	50ae7612-fd2e-41e4-a369-50d0dea6e592
PVC free	Yes

### Use Longer




### Lifetime extension

Repair	No
--------	----

### Use Again



### Repack and remanufacture

Recyclability potential, in %	75
End of life manual availability	<a href="#">End of Life Information</a>
Take-back	No
WEEE Label	 The product must be disposed on European Union markets following specific waste collection and never end up in rubbish bins

Offer Marketing Illustration

Product benefits / Features

---

### TeSys Deca Contactors

#### Technical Benefits



- Deca green delivers a consistent low consumption range of contactors from 9 A to 80 A.
- Covers control voltage from 24 to 250 V, with same coils for AC and DC.
- Designed to meet the requirements of industrial and HVAC applications
- With IEC60335-1 compliance, improved fire resistance, and dust-proof auxiliaries
- Suitable for safety applications thanks to mechanically linked contacts and mirror contacts
- Outstanding breaking/making capacity up to 20 In with PLC direct connection

Offer Marketing Illustration

Product benefits / Features

---

## TeSys Deca Contactors



### Reliable

Multi-standard solutions, high reliability, long mechanical and electrical durability for different sizes, and the most complete accessories.



### Energy efficiency

These electronic-coil contactors require up to 80 % less energy than electro-mechanical contactors.



### Universal

Multi standards certified (IEC, UL, CSA, CCC, EAC, Marine), Green Premium compliant (RoHS/REACH).



Offer Marketing Illustration

Product benefits / Features

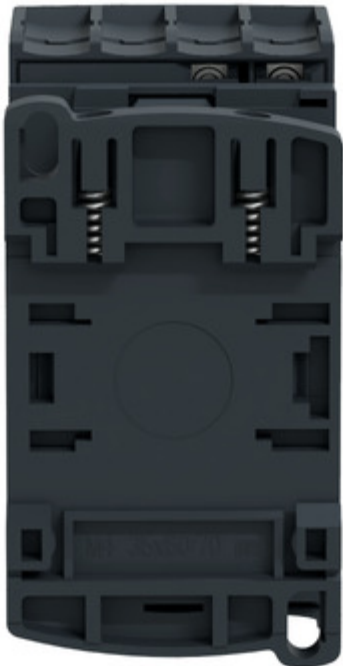
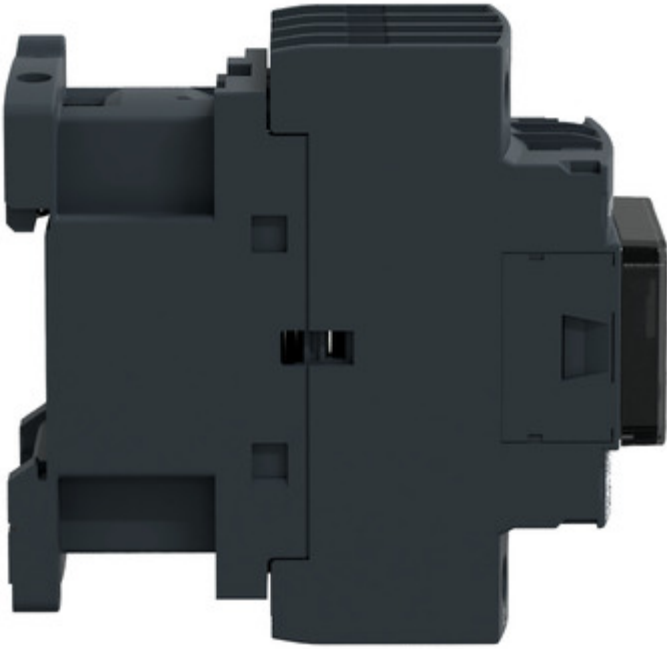
---



Image of product / Alternate images

Alternative

---





Technical Illustration

Assembly's dimensions

---

