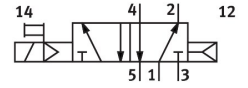
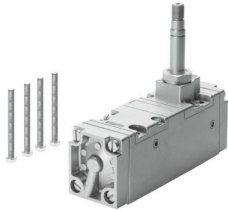


# Air solenoid valve CM-5/2-1/2-CH

Part number: 6117

FESTO



[PDF General operating condition](#)

## Data sheet

Feature	Value
Valve function	5/2-way, monostable
Pneumatic working port	G1/2
Operating pressure	1.5 bar ... 10 bar
Symbol	00991049
LABS (PWIS) conformity	VDMA24364 Zone III
Pneumatic connection 1	G1/2
Pneumatic connection 2	G1/2
Pneumatic connection 3	G1/2
Pneumatic connection 4	G1/2
Pneumatic connection 5	G1/2