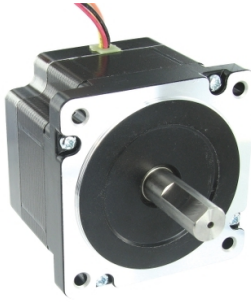


# Product datasheet

Specifications



2-phase stepper motor - 2.96 N.m - shaft  $\varnothing$ ~14 mm - L=60mm - without brake - 6.3A

BRS2851A600

⚠ Discontinued on: 15 Jun 2023

⚠ Discontinued

## Main

Range compatibility	Lexium SD2
Product or component type	Motion control motor
Device short name	BRS2
Motor type	2-phase stepper motor

## Complementary

Maximum mechanical speed	1800 rpm
Supply voltage limits	12...48 V DC
Mounting support	Flange
Motor flange size	86 mm
Length	60 mm
Number of motor stacks	1
Centring collar diameter	73 mm
Centring collar depth	2 mm
Number of mounting holes	4
Mounting holes diameter	5.5 mm
Circle diameter of the mounting holes	98.4 mm
Electrical connection	Flying lead
Holding brake	Without
Shaft end	Smooth shaft
Second shaft	Without second shaft end
Shaft diameter	14 mm
Shaft length	35 mm
Holding torque	2.96 N.m
Rotor inertia	1 kg.cm <sup>2</sup>
Resolution	200 steps number of full steps per revolution 1.8 ° step angle
[In] rated current	6.3 A
Resistance	0.25 Ohm (winding)

## Environment

<b>Ambient air temperature for operation</b>	-25...40 °C
<b>Ambient air temperature for storage</b>	-25...70 °C
<b>Operating altitude</b>	<= 1000 m without power derating
<b>Relative humidity</b>	15...85 % without condensation
<b>IP degree of protection</b>	IP20 conforming to IEC/EN 60034-1
<b>Temperature class</b>	B winding conforming to IEC/EN 60034-1

## Packing Units

<b>Unit Type of Package 1</b>	PCE
<b>Number of Units in Package 1</b>	1
<b>Package 1 Height</b>	19.5 cm
<b>Package 1 Width</b>	29.5 cm
<b>Package 1 Length</b>	38.4 cm
<b>Package 1 Weight</b>	1.8 kg
<b>Unit Type of Package 2</b>	CAR
<b>Number of Units in Package 2</b>	6
<b>Package 2 Height</b>	19.5 cm
<b>Package 2 Width</b>	29.5 cm
<b>Package 2 Length</b>	38.4 cm
<b>Package 2 Weight</b>	10.677 kg
<b>Unit Type of Package 3</b>	S06
<b>Number of Units in Package 3</b>	24
<b>Package 3 Height</b>	73.5 cm
<b>Package 3 Width</b>	60 cm
<b>Package 3 Length</b>	80 cm
<b>Package 3 Weight</b>	55.708 kg

## Contractual warranty

<b>Warranty (in months)</b>	18
-----------------------------	----



## Environmental Data

Schneider Electric aims to achieve Net Zero status by 2050 through supply chain partnerships, lower impact materials, and circularity via our ongoing “Use Better, Use Longer, Use Again” campaign to extend product lifetimes and recyclability.

[Environmental Data explained >](#)

[How we assess product sustainability >](#)

### Use Longer



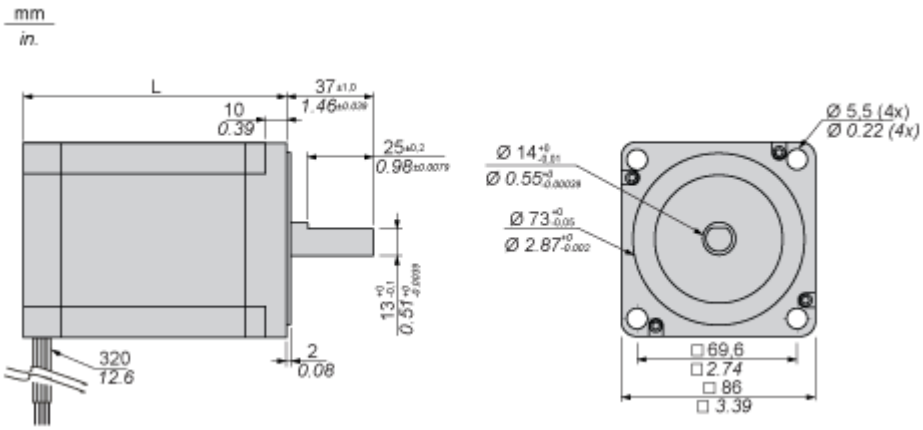
#### Lifetime extension

Repair

No

Dimensions Drawings

Dimensions



Dimensions in mm

L
60

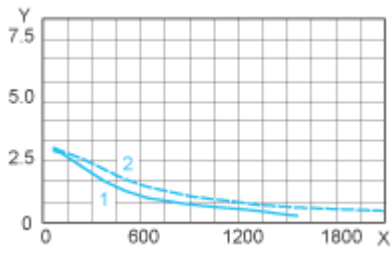
Dimensions in in.

L
2.36

Performance Curves

Torque Characteristics

---



X : Speed of rotation in rpm

Y : Torque in Nm

1 : 24 VDC

2 : 48 VDC