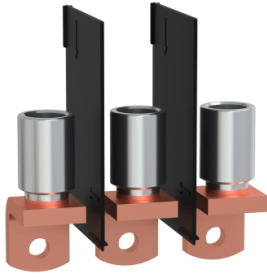


Product datasheet

Specifications



crimp lugs for aluminium cable with interphase barriers, 240 mm², TransferPacT, Frame 630 A, 3P, set of 3

TPSCON61

Main

Range of product	TransferPacT
Product or component type	Crimp lug
Accessory / separate part category	Connection accessory
Range compatibility	TransferPacT
Poles description	3P
Quantity per set	Set of 3

Complementary

[In] rated current	630 A
Conductor material	Aluminium
Connections - terminals	Cable with lug1 cable(s) 240 mm ²
Product compatibility	TA63 TR63

Packing Units

Unit Type of Package 1	PCE
Number of Units in Package 1	1
Package 1 Height	4.000 cm
Package 1 Width	24.500 cm
Package 1 Length	27.000 cm
Package 1 Weight	559.000 g
Unit Type of Package 2	S03
Number of Units in Package 2	10
Package 2 Height	30.000 cm
Package 2 Width	30.000 cm
Package 2 Length	40.000 cm
Package 2 Weight	6.000 kg

Contractual warranty

Warranty (in months)	18
----------------------	----



Environmental Data

Schneider Electric aims to achieve Net Zero status by 2050 through supply chain partnerships, lower impact materials, and circularity via our ongoing “Use Better, Use Longer, Use Again” campaign to extend product lifetimes and recyclability.

[Environmental Data explained >](#)

[How we assess product sustainability >](#)



Environmental footprint

[Environmental Disclosure](#)

[Product Environmental Profile](#)

Use Better



Materials and Substances

Packaging made with recycled cardboard

Yes

Packaging without single use plastic

No

[EU RoHS Directive](#)

Compliant with Exemptions

SCIP Number

C3983c66-b0d8-4e89-97bd-6283c5c8cdd7

REACH Regulation

[REACH Declaration](#)

Use Longer



Lifetime extension

Repair

No

Use Again



Repack and remanufacture

End of life manual availability

[End of Life Information](#)

Take-back

No

WEEE Label



The product must be disposed on European Union markets following specific waste collection and never end up in rubbish bins