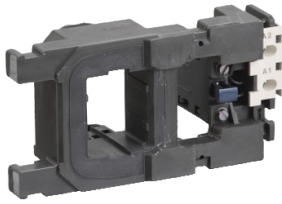


# Product data sheet

Specifications



## TeSys F - contactor coil - LX1FH - 190...250 V AC 40...400 Hz

LX1FH1902

⚠ Discontinued on: Jul 12, 2021

⚠ Discontinued

### Main

Range	TeSys
Product or Component Type	Contactor coil
Device short name	LX1FH
Range compatibility	TeSys TeSys F LC1F contactor
Product Compatibility	LC1F330 LC1F265
Control circuit type	AC 40...400 Hz
[Uc] control circuit voltage	190...250 V AC 40...400 Hz
Average resistance	58.4 Ohm inrush 68 °F (20 °C) 1366 Ohm holding 68 °F (20 °C)
Operating time	100...170 ms opening 40...65 ms closing
Mechanical durability	10 Mcycles
Maximum operating rate	2400 cyc/h 131 °F (55 °C)

### Complementary

Coil technology	Without built-in suppressor module
Control circuit voltage limits	Drop-out 0.35...0.55 Uc 40...400 Hz 131 °F (55 °C) Operational 0.85...1.1 Uc 40...400 Hz 131 °F (55 °C)
Inrush power in VA	650 VA 40...400 Hz cos phi 0.9 (at 68 °F (20 °C))
Hold-in power consumption in VA	10 VA 40...400 Hz cos phi 0.3 (at 68 °F (20 °C))
Heat dissipation	8 W 40...400 Hz

### Environment

Ambient Air Temperature for Operation	23...131 °F (-5...55 °C)
Net Weight	1.65 lb(US) (0.75 kg)

### Ordering and shipping details

Category	22341-CONTACTOR,D,K,&F ACCESS
Discount Schedule	I12
GTIN	3389110454215
Returnability	No

Price is "List Price" and may be subject to a trade discount – check with your local distributor or retailer for actual price.

## Packing Units

Unit Type of Package 1	PCE
Nbr. of units in pkg.	1
Package 1 Height	3.7 in (9.5 cm)
Package 1 Width	4.1 in (10.5 cm)
Package 1 Length	7.5 in (19 cm)
Package weight(Lbs)	30.8 oz (872 g)

## Contractual warranty

Warranty (in months)	18
----------------------	----



## Environmental Data

Schneider Electric aims to achieve Net Zero status by 2050 through supply chain partnerships, lower impact materials, and circularity via our ongoing “Use Better, Use Longer, Use Again” campaign to extend product lifetimes and recyclability.

[Environmental Data explained >](#)

[How we assess product sustainability >](#)



### Environmental footprint

[Environmental Disclosure](#)

[Product Environmental Profile](#)

## Use Better



### Materials and Substances

[EU RoHS Directive](#)

Pro-active compliance (Product out of EU RoHS legal scope)

## Use Longer



### Lifetime extension

[Repair](#)

[No](#)