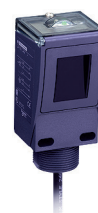


Objects on conveyor



Application				
System	Diffuse with adjustable background suppression			
<b>Sensing distance</b>	<b>20 to 300 m</b>	<b>0 to 1 m</b>	<b>1.2 m</b>	<b>2 m</b>
Mounting (mm)	Mounting: M3 holes, mounting centers 24	direct: mounting centers 40 x 40	M30 x 1.5 or M5, mounting centers 30	direct: mounting centers 30/38 to 40/50/74 M5 screw
Sensitivity adjustment	Potentiometer	–	Potentiometer	–
Case P (plastic) / Setup assistance LEDs ⊗	P / ⊗	P / ⊗	P / ⊗	P / ⊗
Temperature range	-13 to +131 °F (–25 to +55 °C)			
Degree of protection (conforming to IEC 60529)	IP67	IP65	IP67, NEMA 4X	IP67
Product certification	CE- cURus	CE, UL, CSA	CE, UL, CSA	CE, UL, CSA
Dimensions H x W x D: mm (in.)	33 x 20 x 11 (1.30 x 0.79 x 0.43)	50 x 18 x 50 (1.97 x 0.71 x 1.97)	95 x 45 x 44 (3.74 x 1.77 x 1.73)	92 x 30.5 x 71 (3.62 x 1.20 x 2.80)

### Sensors for DC applications (solid-state output: transistor). Sensors with overload and short-circuit protection

Connection			Precabled	Precabled, PVC (2 m)	Screw terminals
<b>Transmitter / Receiver</b>	3-wire PNP / NPN	programmable NO / NC	–	<b>XUK8AKSNL2</b>	<b>XUC8AKSNL2</b>
	PNP	programmable NO / NC	<b>XUM8APCNL2</b>	–	–
	NPN	programmable NO / NC	<b>XUM8ANCNL2</b>	–	–
<b>Connection</b>			<b>M8 connector</b>	<b>M12 connector</b>	
<b>Transmitter / Receiver</b>	3-wire PNP / NPN	programmable NO / NC	–	<b>XUK8AKSNM12</b>	<b>XUC8AKSNM12</b>
	PNP	programmable NO / NC	<b>XUM8APCNM8 (1)</b>	–	–
	NPN	programmable NO / NC	<b>XUM8ANCNM8 (1)</b>	–	–
Supply voltage limits, min./max. (V) including ripple			10 to 36	10 to 38	10 to 36
Switching capacity, max. (mA) / Switching frequency (Hz)			100 / 250	100 / 500	100 / 150



System	Diffuse with adjustable background suppression			
<b>Sensing distance</b>	<b>70 to 120 mm</b>	<b>10 to 750 mm</b>	<b>1.2 m</b>	<b>2 m</b>
Mounting (mm)	M18 x 1	M30 x 1.5 or M5, mounting centers 30	M30 x 1.5 or M5, mounting centers 30	direct: mounting centers 30/38 to 40/50/74 M5 screw
Sensitivity adjustment	Potentiometer	teach mode	Potentiometer	–
Case M (metal) P (plastic) / Setup assistance LEDs ⊗	M / ⊗	P / ⊗	P / ⊗	P / ⊗
Temperature range	-13 to +131 °F (–25 to +55 °C)			
Degree of protection (conforming to IEC 60529)	IP67	IP65	IP67, NEMA 4X	IP67
Product certification	CE, UL, CSA	CE, UL, CSA	CE, UL, CSA	CE, UL, CSA
Dimensions Ø x L or H x W x D: mm (in.)	M18 x 82 (3.23)	50 x 18 x 50 (1.97 x 0.71 x 1.97)	95 x 45 x 44 (3.74 x 1.77 x 1.73)	92 x 30.5 x 71 (3.62 x 1.20 x 2.80)

### Multi-current/multi-voltage sensors for AC/DC applications

Connection			Cable 2 m	Cable	Cable 2 m / Connector 7/8"	Screw terminals
<b>Transmitter / Receiver</b>	<b>AC/DC</b>	NO function	<b>XU8M18MA230</b>	–	–	–
		programmable NO / NC	–	<b>XUK8ARCTL2</b>	<b>XUC8ARCTL2 / XUC8ARCTU78</b>	<b>XUX8ARCTT16</b>
Supply voltage limits, min./max. (V) including ripple			20 to 264	20 to 264	20 to 264	20 to 264
Switching capacity, max. (mA) / Switching frequency (Hz)			200 / 25	3000 / 20	3000 / 20	3000 / 20
Overload and short-circuit protection (★) / LED output state indicator (⊗)			(2) / ⊗	–	–	–

(1) Also available with M12 remote connector with 0.3 m cable. To order, replace **M8** with **L03M12** in the catalog number.  
 (2) Sensor not short-circuit protected. Therefore, you must connect a 0.4 A quick-blow fuse in series with the load.

### Accessories

#### Simple mountings



Conduit adapter (ISO 16 to 1/2" NPT)

**XUZ2001**