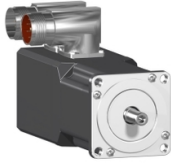


# Product datasheet

Specifications



## AC servo motors BRH - 0.76 N.m - 1500 rpm - untapped shaft - with brake - IP41

BRH0571T02F2A

⚠ Discontinued on: 8 Jul 2022

⚠ Discontinued

EAN Code: 3389118359086

### Main

Product or component type	Motion servo motors
Component name	BRH
Continuous stall torque	0.46 N.m
Peak stall torque	0.88 N.m for LXM05CU70M2 1.15 N.m for LXM05AD10F1 1.15 N.m for LXM05AD10M2 1.15 N.m for LXM05AD10M3X 1.15 N.m for LXM05BD10F1 1.15 N.m for LXM05BD10M2 1.15 N.m for LXM05BD10M3X 1.15 N.m for LXM05CD10F1 1.15 N.m for LXM05CD10M2 1.15 N.m for LXM05CD10M3X
Nominal output power	135 W for LXM05AD10F1 135 W for LXM05BD10F1 135 W for LXM05CD10F1 260 W for LXM05AD10M2 260 W for LXM05AD10M3X 260 W for LXM05BD10M2 260 W for LXM05BD10M3X 260 W for LXM05CD10M2 260 W for LXM05CD10M3X 260 W for LXM05CU70M2
Nominal speed	3000 rpm for LXM05AD10F1 3000 rpm for LXM05BD10F1 3000 rpm for LXM05CD10F1 6000 rpm for LXM05AD10M2 6000 rpm for LXM05AD10M3X 6000 rpm for LXM05BD10M2 6000 rpm for LXM05BD10M3X 6000 rpm for LXM05CD10M2 6000 rpm for LXM05CD10M3X 6000 rpm for LXM05CU70M2
Maximum mechanical speed	8000 rpm
Product compatibility	LXM05AD10F1 at 115 V single phase LXM05AD10M2 at 230 V single phase LXM05AD10M3X at 230 V 3 phases LXM05BD10F1 at 115 V single phase LXM05BD10M2 at 230 V single phase LXM05BD10M3X at 230 V 3 phases LXM05CD10F1 at 115 V single phase LXM05CD10M2 at 230 V single phase LXM05CD10M3X at 230 V 3 phases LXM05CU70M2 at 230 V single phase
Shaft end	Untapped
IP degree of protection	IP41
Encoder type	Multiturn SinCos Hiperface
Speed feedback resolution	131072 points/turn x 4096 turns

<b>Holding brake</b>	With
<b>Mounting support</b>	International standard flange
<b>Electrical connection</b>	Rotatable right-angled connectors
<b>Nominal torque</b>	0.41 N.m for LXM05AD10M2 0.41 N.m for LXM05AD10M3X 0.41 N.m for LXM05BD10M2 0.41 N.m for LXM05BD10M3X 0.41 N.m for LXM05CD10M2 0.41 N.m for LXM05CD10M3X 0.41 N.m for LXM05CU70M2 0.43 N.m for LXM05AD10F1 0.43 N.m for LXM05BD10F1 0.43 N.m for LXM05CD10F1
<b>Number of poles</b>	10
<b>Maximum radial force Fr</b>	109 N at 1000 rpm 72 N at 6000 rpm 73 N at 5000 rpm 74 N at 4000 rpm 76 N at 3000 rpm 81 N at 2000 rpm

## Complementary

<b>Range compatibility</b>	Lexium 05
<b>Switching frequency</b>	8 kHz
<b>Maximum current Irms</b>	6 A for LXM05AD10F1 6 A for LXM05AD10M2 6 A for LXM05AD10M3X 6 A for LXM05BD10F1 6 A for LXM05BD10M2 6 A for LXM05BD10M3X 6 A for LXM05CD10F1 6 A for LXM05CD10M2 6 A for LXM05CD10M3X 4.3 A for LXM05CU70M2
<b>Torque constant</b>	0.21 N.m/A at 120 °C
<b>Back emf constant</b>	13.1 V/krpm at 120 °C
<b>Rotor inertia</b>	0.18 kg.cm <sup>2</sup> with brake 0.18 kg.cm <sup>2</sup> without brake
<b>Stator resistance</b>	5 Ohm
<b>Stator inductance</b>	9.5 mH
<b>Stator electrical time constant</b>	1.9 ms
<b>Maximum axial force Fa</b>	0.2 x Fr
<b>Net weight</b>	1.1 kg



## Environmental Data

Schneider Electric aims to achieve Net Zero status by 2050 through supply chain partnerships, lower impact materials, and circularity via our ongoing “Use Better, Use Longer, Use Again” campaign to extend product lifetimes and recyclability.

[Environmental Data explained >](#)

[How we assess product sustainability >](#)

### Use Longer



#### Lifetime extension

Repair

No