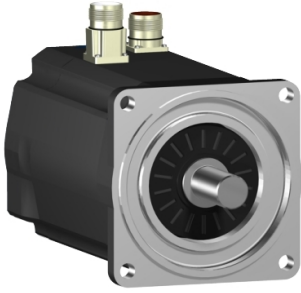


# Product data sheet

Specifications



## SH3 servomotor, 140mm, 3 stacks, keyed Shaft, SinCos Multiturn 128, Brake, straight, IP65/67

SH31403P12F1200

**Product availability: Non-Stock - Not normally stocked in distribution facility**

### Main

Range Compatibility	PacDrive 3
Device short name	SH3
Product or Component Type	Servo motor

### Complementary

Maximum mechanical speed	4000 rpm
[Us] rated supply voltage	115...480 V
Phase	Three phase
Continuous stall current	17.6 A
Continuous stall torque	246.05 lbf.in (27.8 N.m) 115...480 V three phase
Continuous power	4100 W
Peak stall torque	798.3 lbf.in (90.2 N.m) 115...480 V three phase
Nominal output power	1940 W 115 V single phase 3330 W 230 V single phase 4050 W 400 V three phase 3430 W 480 V three phase
Nominal torque	218.6 lbf.in (24.7 N.m) 115 V single phase 187.6 lbf.in (21.2 N.m) 230 V single phase 114.2 lbf.in (12.9 N.m) 400 V three phase 80.5 lbf.in (9.1 N.m) 480 V three phase
Nominal speed	750 rpm 115 V single phase 1500 rpm 230 V single phase 3000 rpm 400 V three phase 3600 rpm 480 V three phase
Maximum current Irms	61.0 A
Shaft end	Parallel key
Shaft diameter	0.9 in (24 mm)
Shaft length	2.0 in (50 mm)
Key width	0.3 in (8 mm)
IP degree of protection	IP65 motor: conforming to IEC 60034-5 IP65 shaft bushing: conforming to IEC 60034-5 IP67 housing: conforming to IEC 60034-5
Encoder type	Absolute multiturn SinCos Hiperface
Speed feedback resolution	128 periods
Holding brake	With
Holding torque	318.6 lbf.in (36 N.m)
Mounting Support	International standard flange

Price is "List Price" and may be subject to a trade discount – check with your local distributor or retailer for actual price.

Motor flange size	5.5 in (140 mm)
Electrical Connection	Straight connector
Torque constant	1.58 N.m/A 248 °F (120 °C)
Back emf constant	105 V/krpm 68 °F (20 °C)
Number of motor poles	5
Rotor inertia	23.44 kg.cm <sup>2</sup>
Stator resistance	0.4 Ohm
Stator inductance	2.66 mH
Maximum radial force Fr	2420 N 1000 rpm 1920 N 2000 rpm 1670 N 3000 rpm
Maximum axial force Fa	300 N
Type of cooling	Natural convection
Length	14.4 in (365.5 mm)
Centring collar diameter	5.1 in (130 mm)
Centring collar depth	0.1 in (3.5 mm)
Number of mounting holes	4
Mounting holes diameter	0.4 in (11 mm)
Circle diameter of the mounting holes	6.5 in (165 mm)
Net Weight	50.9 lb(US) (23.1 kg)
Sizing reference	SH31403P
Network number of phases	3
Temperature copper hot	266 °F (130 °C)
Electrical connection	straight connector
Output current 3s peak	61.0 A
Inertia	5.5 kg.cm <sup>2</sup> of brake 17.94 kg.cm <sup>2</sup> of motor

## Ordering and shipping details

Category	US1PC5218359
Discount Schedule	PC52
GTIN	3606488060214
Returnability	No
Country of origin	DE

## Packing Units

Unit Type of Package 1	PCE
Nbr. of units in pkg.	1
Package 1 Height	23.2 in (59 cm)
Package 1 Width	7.9 in (20 cm)
Package 1 Length	10.2 in (26 cm)
Package weight(Lbs)	55.31 lb(US) (25.09 kg)

# Contractual warranty

---

Warranty (in months)

18



## Environmental Data

Schneider Electric aims to achieve Net Zero status by 2050 through supply chain partnerships, lower impact materials, and circularity via our ongoing “Use Better, Use Longer, Use Again” campaign to extend product lifetimes and recyclability.

[Environmental Data explained >](#)

[How we assess product sustainability >](#)

### Use Better

<b>Materials and Substances</b>	
Packaging made with recycled cardboard	Yes
Packaging without single use plastic	No
<a href="#">EU RoHS Directive</a>	Pro-active compliance (Product out of EU RoHS legal scope)
SCIP Number	Ead0850d-370a-47c5-8cf7-1d93c2c974a4
REACH Regulation	<a href="#">REACH Declaration</a>
California proposition 65	<b>WARNING:</b> This product can expose you to chemicals including: Lead and lead compounds, which is known to the State of California to cause cancer and birth defects or other reproductive harm. For more information go to <a href="http://www.P65Warnings.ca.gov">www.P65Warnings.ca.gov</a>
PVC free	Yes

### Use Longer

<b>Lifetime extension</b>	
Repair	No

### Use Again

<b>Repack and remanufacture</b>	
Circularity Profile	No need of specific recycling operations
Take-back	No