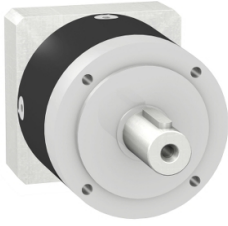


Product data sheet

Specifications



gearbox with straight teeth GBX- Ø 60 mm- reduction 3:1- < 16arcmin- 28 N.m

GBX0600031401F

⚠ Discontinued on: Feb 18, 2022

⚠ Discontinued

Main

Range compatibility	Lexium 32
Product or component type	Planetary gearbox
Gear box type	Straight teeth
Device short name	GBX
Gearbox external diameter	2.4 in (60 mm)
Product compatibility	BSH1401... BMH1401...
Reduction ratio	3:1

Complementary

Maximum torsional backlash	16 arc.min
Torsional rigidity	2.3 N.m/arcmin
Housing colour	Black
Housing material	Black anodized aluminium
Shaft material	C 45
Additional information	Lubricated for life
Service life in hours	30000 h 100 rpm 86 °F (30 °C)
Efficiency	94 %
Maximum radial force Fr	340 N 100 rpm, force applied at mid-distance from output shaft during 30000 hour at 30 °C 500 N 100 rpm, force applied at mid-distance from output shaft during 10000 hour at 30 °C
Maximum axial force Fa	450 N 100 rpm, during 30000 hour at 30 °C
Continuous output torque	247.8 lbf.in (28 N.m) 100 rpm 86 °F (30 °C)
Maximum output torque	398.3 lbf.in (45 N.m) 100 rpm 86 °F (30 °C)
Net weight	2.0 lb(US) (0.9 kg)
Compatibility code	GBX

Environment

Noise level	58 dB 1 m, no-load
IP degree of protection	Shaft output IP54
ambient temperature for operation	-13...194 °F (-25...90 °C)

Packing Units

Unit Type of Package 1	PCE
------------------------	-----

Number of Units in Package 1	1
------------------------------	---

Contractual warranty

Warranty (in months)	18
----------------------	----



Environmental Data

Schneider Electric aims to achieve Net Zero status by 2050 through supply chain partnerships, lower impact materials, and circularity via our ongoing “Use Better, Use Longer, Use Again” campaign to extend product lifetimes and recyclability.

[Environmental Data explained >](#)

[How we assess product sustainability >](#)

Use Longer



Lifetime extension

Repair

No