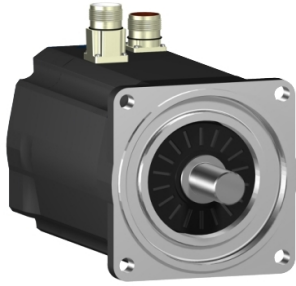


Product data sheet

Specifications



SH3 servomotor, 100mm, 3 stacks, smooth Shaft, SinCos Multiturn 128, no Brake, straight, IP65/67

SH31003P02A1200

Product availability: Non-Stock - Not normally stocked in distribution facility

Main

Range Compatibility	PacDrive 3
Device short name	SH3
Product or Component Type	Servo motor

Complementary

Maximum mechanical speed	6000 rpm
[Us] rated supply voltage	115...480 V
Phase	Three phase
Continuous stall current	6.6 A
Continuous stall torque	70.8 lbf.in (8 N.m) 115...480 V three phase
Continuous power	2400 W
Peak stall torque	250.5 lbf.in (28.3 N.m) 115...480 V three phase
Nominal output power	790 W 115 V single phase 1470 W 230 V single phase 2390 W 400 V three phase 2560 W 480 V three phase
Nominal torque	45.1 lbf.in (5.1 N.m) 480 V three phase 66.4 lbf.in (7.5 N.m) 115 V single phase 62.0 lbf.in (7 N.m) 230 V single phase 50.4 lbf.in (5.7 N.m) 400 V three phase
Nominal speed	1000 rpm 115 V single phase 2000 rpm 230 V single phase 4000 rpm 400 V three phase 4800 rpm 480 V three phase
Maximum current Irms	28.3 A
Shaft end	Smooth shaft
Shaft diameter	0.7 in (19 mm)
Shaft length	1.6 in (40 mm)
IP degree of protection	IP65 motor: conforming to IEC 60034-5 IP65 shaft bushing: conforming to IEC 60034-5 IP67 housing: conforming to IEC 60034-5
Encoder type	Absolute multiturn SinCos Hiperface
Speed feedback resolution	128 periods
Holding brake	Without
Mounting Support	International standard flange
Motor flange size	3.9 in (100 mm)
Electrical Connection	Straight connector

Price is "List Price" and may be subject to a trade discount – check with your local distributor or retailer for actual price.

Torque constant	1.22 N.m/A 248 °F (120 °C)
Back emf constant	77 V/krpm 68 °F (20 °C)
Number of motor poles	4.0
Rotor inertia	3.22 kg.cm ²
Stator resistance	1.43 Ohm
Stator inductance	4.7 mH
Maximum radial force Fr	1050 N 1000 rpm 830 N 2000 rpm 730 N 3000 rpm 660 N 4000 rpm
Maximum axial force Fa	160 N
Type of cooling	Natural convection
Length	9.5 in (240.5 mm)
Centring collar diameter	3.7 in (95 mm)
Centring collar depth	0.1 in (3.5 mm)
Number of mounting holes	4
Mounting holes diameter	0.4 in (9.0 mm)
Circle diameter of the mounting holes	4.5 in (115 mm)
Net Weight	16.5 lb(US) (7.5 kg)
Sizing reference	SH31003P
Network number of phases	3
Temperature copper hot	266 °F (130 °C)
Electrical connection	straight connector
Output current 3s peak	28.3 A
Inertia	0.0 kg.cm ² of brake 3.22 kg.cm ² of motor

Ordering and shipping details

Category	US1PC5218359
Discount Schedule	PC52
GTIN	3606488043057
Returnability	No
Country of origin	DE

Packing Units

Unit Type of Package 1	PCE
Nbr. of units in pkg.	1
Package 1 Height	14.02 in (35.6 cm)
Package 1 Width	7.09 in (18 cm)
Package 1 Length	8.3 in (21 cm)
Package weight(Lbs)	17.79 lb(US) (8.07 kg)

Contractual warranty



Environmental Data

Schneider Electric aims to achieve Net Zero status by 2050 through supply chain partnerships, lower impact materials, and circularity via our ongoing “Use Better, Use Longer, Use Again” campaign to extend product lifetimes and recyclability.

[Environmental Data explained >](#)

[How we assess product sustainability >](#)

Use Better

Materials and Substances	
Packaging made with recycled cardboard	Yes
Packaging without single use plastic	No
EU RoHS Directive	Pro-active compliance (Product out of EU RoHS legal scope)
SCIP Number	Ead0850d-370a-47c5-8cf7-1d93c2c974a4
REACH Regulation	REACH Declaration
California proposition 65	WARNING: This product can expose you to chemicals including: Lead and lead compounds, which is known to the State of California to cause cancer and birth defects or other reproductive harm. For more information go to www.P65Warnings.ca.gov
PVC free	Yes

Use Longer

Lifetime extension	
Repair	No

Use Again

Repack and remanufacture	
Circularity Profile	No need of specific recycling operations
Take-back	No