






locking mechanism to prevent movement of the withdrawable circuit breaker in the isolated position on the guide frame add-on for 3VW9011-0BA80/-0BA87 accessories for circuit breakers 3WL10 / 3VA27

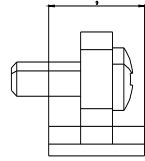
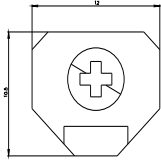
Model	
product brand name	SENTRON
product designation	locking device against movement of the withdrawable circuit breaker
design of the product	in isolated position, on guide frame
Accessories	
accessories	Accessories for 3WL10 / 3VA27 circuit breakers
Mechanical Design	
height	61 mm
width	90 mm
depth	140 mm
Net Weight	100 g
Approvals Certificates	
General Product Approval	Maritime application other
Confirmation	Confirmation
	
	
other	Environment
	Environmental Confirmations

Further information
Information on the packaging https://support.industry.siemens.com/cs/ww/en/view/109813875
Information for data generation and storage https://support.industry.siemens.com/cs/ww/en/view/109995012
Information- and Downloadcenter (Catalogs, Brochures,...) https://www.siemens.com/lowvoltage/catalogs
Industry Mall (Online ordering system) https://mall.industry.siemens.com/mall/en/en/Catalog/product?mlfb=3VW9011-0BA84
Service&Support (Manuals, Certificates, Characteristics, FAQs,...) https://support.industry.siemens.com/cs/ww/en/ps/3VW9011-0BA84
Image database (product images, 2D dimension drawings, 3D models, device circuit diagrams, ...) https://www.automation.siemens.com/bilddb/cax_en.aspx?mlfb=3VW9011-0BA84
CAX-Online-Generator https://www.siemens.com/cax
Tender specifications

<https://www.siemens.com/specifications>

Characteristic curves

https://curves.simaris.siemens.com/curves/<mmp_prod_noCOMP='HAUPT'></mmp_prod_no>



last modified:

4/4/2025 

