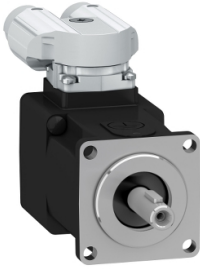


Product datasheet

Specifications



SH3 servomotor, 40mm, 1 stack, keyed Shaft, SinCos Multiturn 16, no Brake, angular, IP54/65

SH30401P17A2000

Main

Range compatibility	PacDrive 3
Device short name	SH3
Product or component type	Servo motor

Complementary

Maximum mechanical speed	9000 rpm
[Us] rated supply voltage	115...480 V
Network number of phases	Three phase
Continuous stall current	1.12 A
Continuous stall torque	0.21 N.m at 115...480 V three phase
Continuous power	170 W
Peak stall torque	0.75 N.m at 480 V three phase
Nominal output power	77 W at 115 V single phase 77 W at 230 V single phase 166 W at 400 V three phase 166 W at 480 V three phase
Nominal torque	0.176 N.m at 115 V single phase 0.176 N.m at 230 V single phase 0.184 N.m at 400 V three phase 0.184 N.m at 480 V three phase
Nominal speed	4000 rpm at 115 V single phase 4000 rpm at 230 V single phase 9000 rpm at 400 V three phase 9000 rpm at 480 V three phase
Maximum current Irms	4.5 A
Shaft end	Parallel key
Shaft diameter	8 mm
Shaft length	25 mm
Key width	3 mm
IP degree of protection	IP54 shaft bushing without shaft seal ring: conforming to IEC 60034-5 IP65 motor: conforming to IEC 60034-5 IP65 shaft bushing: conforming to IEC 60034-5
Encoder type	Absolute multiturn SinCos Hiperface
Speed feedback resolution	16 periods
Holding brake	Without
Mounting support	International standard flange
Motor flange size	40 mm

Excluding VAT and subject to change. Please check with your local distributor through "Where to buy"

Electrical connection	Rotatable right angled connector
Torque constant	0.19 N.m/A at 120 °C
Back emf constant	13.6 V/krpm at 20 °C
Number of motor poles	5.0
Rotor inertia	0.0232 kg.cm ²
Stator resistance	17.2 Ohm
Stator inductance	7.3 mH
Type of cooling	Natural convection
Length	73.4 mm
Centring collar diameter	30 mm
Centring collar depth	2.5 mm
Number of mounting holes	4
Mounting holes diameter	4.5 mm
Circle diameter of the mounting holes	46 mm
Net weight	0.4 kg
Sizing reference	SH30402P
Network number of phases	3
Temperature copper hot	120 °C
Electrical connection	rotatable right angled connector
Output current 3s peak	4.5 A
Inertia	0.0 kg.cm ² of brake 0.023 kg.cm ² of motor

Packing Units

Unit Type of Package 1	PCE
Number of Units in Package 1	1
Package 1 Height	11.0 cm
Package 1 Width	17.0 cm
Package 1 Length	24.0 cm
Package 1 Weight	627.0 g

Contractual warranty

Warranty (in months)	18
----------------------	----



Environmental Data

Schneider Electric aims to achieve Net Zero status by 2050 through supply chain partnerships, lower impact materials, and circularity via our ongoing “Use Better, Use Longer, Use Again” campaign to extend product lifetimes and recyclability.

[Environmental Data explained >](#)

[How we assess product sustainability >](#)



Environmental footprint

Total lifecycle Carbon footprint	408 kg CO2 eq.
Carbon footprint of the manufacturing phase [A1 to A3]	3 kg CO2 eq.
Carbon footprint of the distribution phase [A4]	0.1 kg CO2 eq.
Carbon footprint of the installation phase [A5]	0 kg CO2 eq.
Carbon footprint of the use phase [B2, B3, B4, B6]	405 kg CO2 eq.
Carbon footprint of the end-of-life phase [C1 to C4]	0.1 kg CO2 eq.

Use Better



Materials and Substances

Packaging made with recycled cardboard	Yes
Packaging without single use plastic	No
EU RoHS Directive	Pro-active compliance (Product out of EU RoHS legal scope)
SCIP Number	Ead0850d-370a-47c5-8cf7-1d93c2c974a4
REACH Regulation	REACH Declaration
PVC free	Yes

Use Longer



Lifetime extension

Repair	No
--------	----

Use Again



Repack and remanufacture

End of life manual availability	No need of specific recycling operations
Take-back	No