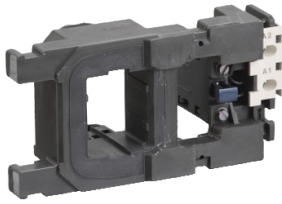


# Product data sheet

Specifications



## CONTACTOR COIL LX1F 100-110V AC 50/60HZ

LX1FH11062

⚠ To be discontinued on: Dec 31, 2028

⚠ Discontinued

### Main

Range	TeSys
Product or Component Type	Contactor coil
Device short name	LX1FH
Range compatibility	TeSys TeSys F LC1F contactor
Product Compatibility	LC1F265 LC1F330
Control circuit type	AC 50/60 Hz
[Uc] control circuit voltage	100 V AC 50 Hz 100...110 V AC 60 Hz
Operating time	100...170 ms opening 40...65 ms closing
Maximum operating rate	2400 cyc/h 131 °F (55 °C)

### Complementary

Coil technology	Without built-in suppressor module
Control circuit voltage limits	Drop-out 0.35...0.55 Uc 50/60 Hz 131 °F (55 °C) Operational 0.85...1.1 Uc 50/60 Hz 131 °F (55 °C)
Heat dissipation	8 W 40...400 Hz

### Environment

Ambient Air Temperature for Operation	23...131 °F (-5...55 °C)
---------------------------------------	--------------------------

### Ordering and shipping details

Category	22341-CONTACTOR,D,K,&F ACCESS
Discount Schedule	I12
GTIN	3389118109025
Returnability	No
Country of origin	FR

### Packing Units

Unit Type of Package 1	PCE
Nbr. of units in pkg.	1
Package 1 Height	3.9 in (10.0 cm)

Price is "List Price" and may be subject to a trade discount – check with your local distributor or retailer for actual price.

<b>Package 1 Width</b>	3.9 in (10.0 cm)
<b>Package 1 Length</b>	7.5 in (19.0 cm)
<b>Package weight(Lbs)</b>	31.005 oz (879.0 g)
<b>Unit Type of Package 2</b>	S03
<b>Number of Units in Package 2</b>	12
<b>Package 2 Height</b>	11.8 in (30.0 cm)
<b>Package 2 Width</b>	11.8 in (30.0 cm)
<b>Package 2 Length</b>	15.7 in (40.0 cm)
<b>Package 2 Weight</b>	24.826 lb(US) (11.261 kg)

## Contractual warranty

<b>Warranty (in months)</b>	18
-----------------------------	----



## Environmental Data

Schneider Electric aims to achieve Net Zero status by 2050 through supply chain partnerships, lower impact materials, and circularity via our ongoing “Use Better, Use Longer, Use Again” campaign to extend product lifetimes and recyclability.

[Environmental Data explained >](#)

[How we assess product sustainability >](#)



### Environmental footprint

Total lifecycle Carbon footprint	70 kg CO2 eq.
Carbon footprint of the manufacturing phase [A1 to A3]	0.9 kg CO2 eq.
Carbon footprint of the distribution phase [A4]	0 kg CO2 eq.
Carbon footprint of the installation phase [A5]	0 kg CO2 eq.
Carbon footprint of the use phase [B2, B3, B4, B6]	69 kg CO2 eq.
Carbon footprint of the end-of-life phase [C1 to C4]	0.3 kg CO2 eq.

## Use Better



### Materials and Substances

Packaging made with recycled cardboard	Yes
Packaging without single use plastic	Yes
<a href="#">EU RoHS Directive</a>	Compliant with Exemptions
SCIP Number	975ba4d0-bc82-40e2-8faa-6f6819f63b0c
REACH Regulation	<a href="#">REACH Declaration</a>

## Use Longer



### Lifetime extension

Repair	No
--------	----

## Use Again



### Repack and remanufacture

Recyclability potential, in %	95
Take-back	No