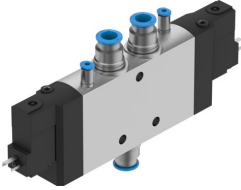


Air solenoid valve CPE24-M3H-5JS-QS-10

Part number: 163847

FESTO



[General operating condition](#)

Data sheet

Feature	Value
Valve function	5/2-way, bistable
Actuation type	Electrical
Width	24 mm
Normal nominal flow rate (normalized to DIN 1343)	1250 l/min
Pneumatic working port	QS-10
Operating voltage	230V AC
Operating pressure	-0.09 MPa ... 1 MPa
Operating pressure	-0.9 bar ... 10 bar
Structural design	Piston gate valve
Certification	c UL us - recognized (OL)
Maritime classification	See certificate
CE marking (see declaration of conformity)	As per EU low voltage directive
UKCA marking (see declaration of conformity)	To UK instructions for electrical equipment
Certificate issuing authority	DNV-TAA000032X UL MH19482
Degree of protection	IP65 With plug socket As per IEC 60529
Nominal width	11 mm
Exhaust air function	Adjustable
Sealing principle	Soft
Mounting position	Any
Manual override	Detenting via accessory Non-detenting
Type of control	Piloted
Pilot air supply port	External
Flow direction	Reversible
Symbol	00991016
Valve position ID	Label holder
Lap	Positive overlap
Pilot pressure MPa	0.2 MPa ... 1 MPa
Pilot pressure	2 bar ... 10 bar
Changeover time	25 ms
Duty cycle	100%
Max. positive test pulse with 0 signal	3300 µs
Max. negative test pulse on 1 signal	3100 µs
Coil characteristics	230 V AC: 50/60 Hz, initial power 3.0 VA, holding power 2.4 VA

Feature	Value
Permissible voltage fluctuations	-15% / +10%
Operating medium	Compressed air as per ISO 8573-1:2010 [7:4:4]
Information on operating and pilot media	Operation with oil lubrication possible (required for further use)
Vibration resistance	Transport application test with severity level 2 as per FN 942017-4 and EN 60068-2-6
Shock resistance	Shock test with severity level 2 as per FN 942017-5 and EN 60068-2-27
Corrosion resistance class (CRC)	2 - Moderate corrosion stress
LABS (PWIS) conformity	VDMA24364-B1/B2-L
Temperature of medium	-5 °C ... 50 °C
Pilot medium	Compressed air as per ISO 8573-1:2010 [7:4:4]
Ambient temperature	-5 °C ... 50 °C
Electrical connection	Type C
Type of mounting	With through-hole
Pilot exhaust air port 82	M5
Pilot exhaust air port 84	M5
Pilot air port 12	M5
Pilot air port 14	M5
Pneumatic connection 1	QS-10
Pneumatic connection 2	QS-10
Pneumatic connection 3	G3/8
Pneumatic connection 4	QS-10
Pneumatic connection 5	G3/8
Note on materials	RoHS compliant
Seals material	NBR
Housing material	Die-cast aluminum