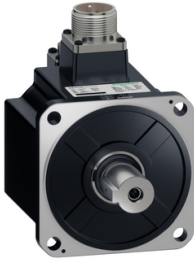


# Product datasheet

Specifications



## BEH18 servo motor, Lexium 18, 220V, 1.5kW, L100, 23bit, OPT MT

BEH18LH1533CA6C

### Main

Range	Lexium 18
Range compatibility	Easy Lexium 18
Device short name	BEH18
Product or component type	Servo motor

### Complementary

Maximum mechanical speed	3000 rpm
[Us] rated supply voltage	220 V
Network number of phases	Single phase
Continuous stall current	8.9 A
Continuous stall torque	4.77 N.m, 220 V, single phase
Continuous power	1500 W
Peak stall torque	14.31 N.m, 220 V, single phase
Nominal output power	1500 W, 220 V, single phase
Nominal torque	4.77 N.m, 220 V, single phase
Nominal speed	3000 rpm, 220 V, single phase
Maximum current Irms	26.7 A at 1.5 kW, 220 V
Maximum permanent current	26.7 A
Product compatibility	Motion servo drive motion servo motors motor at 1.5 kW, 220 V, single phase
Shaft end	Parallel key
Second shaft	Without second shaft end
Shaft diameter	24 mm
Shaft length	45 mm
Key width	8 mm
Feedback type	23 bits optic multi turn encoder
Speed feedback resolution	8388608 points/turn
Holding brake	Without
Mounting support	Asian standard flange
Motor flange size	100 mm
Electrical connection	2 connectors male/female
Torque constant	0.535 N.m/A at 40 °C

Back emf constant	36.5 V/krpm at 40 °C
Number of motor poles	10
Rotor inertia	2.75 kg.cm <sup>2</sup>
Maximum radial force Fr	686 N
Maximum axial force Fa	196 N
Type of cooling	Air-cooled
Length	147.4 mm
Number of mounting holes	4
Mounting holes diameter	9 mm
Width	100 mm
Height	144.5 mm
Depth	147.4 mm
Product weight	4.3 kg
Encoder type	Optic encoder
Inertia	2.75 kg.cm <sup>2</sup>

## Environment

IP degree of protection	IP67
Ambient air temperature for operation	0...40 °C

## Packing Units

Unit Type of Package 1	PCE
Number of Units in Package 1	1
Package 1 Height	20 cm
Package 1 Width	30 cm
Package 1 Length	40 cm
Package 1 Weight	5.9 kg
Unit Type of Package 2	P06
Number of Units in Package 2	16
Package 2 Height	95 cm
Package 2 Width	60 cm
Package 2 Length	80 cm
Package 2 Weight	100.4 kg



## Environmental Data

Schneider Electric aims to achieve Net Zero status by 2050 through supply chain partnerships, lower impact materials, and circularity via our ongoing “Use Better, Use Longer, Use Again” campaign to extend product lifetimes and recyclability.

[Environmental Data explained >](#)

[How we assess product sustainability >](#)



### Environmental footprint

Total lifecycle Carbon footprint	8 682 kg CO2 eq.
Carbon footprint of the manufacturing phase [A1 to A3]	37 kg CO2 eq.
Carbon footprint of the distribution phase [A4]	0.8 kg CO2 eq.
Carbon footprint of the installation phase [A5]	1 kg CO2 eq.
Carbon footprint of the use phase [B2, B3, B4, B6]	8 633 kg CO2 eq.
Carbon footprint of the end-of-life phase [C1 to C4]	10 kg CO2 eq.
Environmental Disclosure	<a href="#">Product Environmental Profile</a>

## Use Better



### Materials and Substances

EU RoHS Directive	<a href="#">Compliant By Exemption</a>
REACH Regulation	<a href="#">Reference contains Substances of Very High Concern above the threshold</a>

## Use Longer



### Lifetime extension

Repair	No
--------	----

## Use Again



### Repack and remanufacture

Recyclability potential, in %	90
End of life manual availability	<a href="#">End of Life Information</a>
Take-back	No