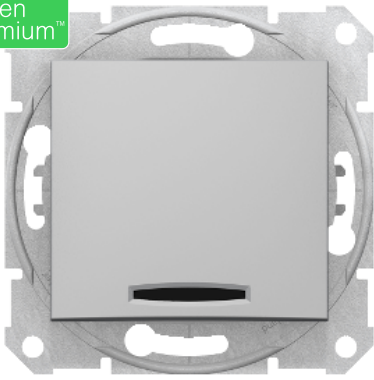


Product data sheet

Specifications



Sedna - intermediate switch - 10AX locator light, aluminium

SDN0501160

⚠ To be discontinued on: 30 December 2023

⚠ To be discontinued

Main

Range	Sedna
Product or component type	Switch
Device presentation	Mechanism with fixing frame
Device application	Control
Switch function	Intermediate
Colour tint	Aluminium

Complementary

Device mounting	Flush
Surface finish	Glossy
Kind of terminals	Screwless terminals
Accessory / separate part type	Claw and screw for mechanism
Power range	2300 W
Wire structure	Rigid Flexible
Wire stripping length	13 mm
Fixing mode	Claws, span of claws working range: 51...70 mm Screws
Height	71 mm
Width	71 mm
Depth	37 mm
Depth of visual part	12 mm
Product weight	0.07853 kg
Market segment	Residential Small commercial

Environment

IP degree of protection	IP20
Conformity mark	CE
Product certifications	GOST-R

Standards	IEC 60669-1
-----------	-------------

Packing Units

Unit Type of Package 1	PCE
Number of Units in Package 1	1
Package 1 Height	4.000 cm
Package 1 Width	7.000 cm
Package 1 Length	7.000 cm
Package 1 Weight	67.500 g
Unit Type of Package 2	BB1
Number of Units in Package 2	10
Package 2 Height	9.500 cm
Package 2 Width	18.500 cm
Package 2 Length	27.500 cm
Package 2 Weight	752.000 g
Unit Type of Package 3	S04
Number of Units in Package 3	120
Package 3 Height	30.000 cm
Package 3 Width	40.000 cm
Package 3 Length	60.000 cm
Package 3 Weight	9.673 kg

Offer Sustainability

Sustainable offer status	Green Premium product
REACH Regulation	REACH Declaration
REACH free of SVHC	Yes
EU RoHS Directive	Compliant EU RoHS Declaration
Toxic heavy metal free	Yes
Mercury free	Yes
China RoHS Regulation	China RoHS declaration Pro-active China RoHS declaration (out of China RoHS legal scope)
RoHS exemption information	Yes
Environmental Disclosure	Product Environmental Profile
WEEE	The product must be disposed on European Union markets following specific waste collection and never end up in rubbish bins

Contractual warranty

Warranty	18 months
----------	-----------

Recommended replacement(s)