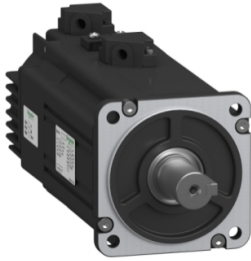


Product datasheet

Specifications



servo motor BCH16, Lexium 16D,
80mm, shaft 19mm, 1.0kW, Low
inertia, 3000rpm, brake

BCH16LF10330F5C2

Main

Range compatibility	Easy Lexium 16
Device short name	BCH16
Product or component type	Servo motor

Complementary

Maximum mechanical speed	5000 rpm
[Us] rated supply voltage	220 V
Network number of phases	3 phases
Continuous stall current	6.8 A
Continuous stall torque	3.18 N.m for LXM16D at 10.13 A, 220 V, single phase
Continuous power	1000 W
Peak stall torque	9.55 N.m for LXM16D at 10.13 A, 220 V, single phase
Nominal output power	1000 W for LXM16D at 10.13 A, 220 V, single phase
Nominal torque	3.18 N.m for LXM16D at 10.13 A, 220 V, single phase
Nominal speed	3000 rpm for LXM16D at 10.13 A, 220 V, single phase
Maximum current Irms	21.9 A for LXM16D at 1.0 kW, 220 V
Maximum permanent current	21.8 A
Product compatibility	LXM16D motion servo motors motor at 1 kW, 220 V, single phase
Shaft end	Parallel key
Second shaft	Without second shaft end
Shaft diameter	19 mm
Shaft length	22 mm
Key width	6 mm
Feedback type	2500 incremental encoder
Holding brake	With
Holding torque	6.5 N.m built-in
Mounting support	Asian standard flange
Motor flange size	80 mm
Electrical connection	Free lead
Torque constant	0.51 N.m/A at 20 °C
Back emf constant	31.1 V/krpm at 20 °C

Rotor inertia	1.37 kg.cm ²
Stator resistance	0.75 Ohm at 20 °C
Stator inductance	4.2 mH at 20 °C
Stator electrical time constant	5.6 ms at 20 °C
Maximum radial force Fr	343.98 N at 3000 rpm
Maximum axial force Fa	122.3 N
Brake pull-in power	10.1 W
Type of cooling	Natural convection
Length	179.5 mm
Centring collar diameter	95 mm
Centring collar depth	3 mm
Number of mounting holes	4
Mounting holes diameter	9 mm
Circle diameter of the mounting holes	115 mm
Distance shaft shoulder-flange	50 mm
Width	100 mm
Height	153.4 mm
Depth	179.5 mm
Net weight	4.7 kg

Environment

IP degree of protection	IP65 IM B5, IM V1 IP65 IM V3
Ambient air temperature for operation	0...40 °C

Packing Units

Unit Type of Package 1	PCE
Number of Units in Package 1	1
Package 1 Height	13.5 cm
Package 1 Width	17.0 cm
Package 1 Length	27.5 cm
Package 1 Weight	4.65 kg
Unit Type of Package 2	S04
Number of Units in Package 2	6
Package 2 Height	30.0 cm
Package 2 Width	40.0 cm
Package 2 Length	60.0 cm
Package 2 Weight	28.66 kg

Contractual warranty

Warranty (in months)	18
----------------------	----



Environmental Data

Schneider Electric aims to achieve Net Zero status by 2050 through supply chain partnerships, lower impact materials, and circularity via our ongoing “Use Better, Use Longer, Use Again” campaign to extend product lifetimes and recyclability.

[Environmental Data explained >](#)

[How we assess product sustainability >](#)



Environmental footprint

Total lifecycle Carbon footprint	8 812 kg CO2 eq.
Environmental Disclosure	Product Environmental Profile
Carbon footprint of the manufacturing phase [A1 to A3]	71 kg CO2 eq.
Carbon footprint of the distribution phase [A4]	0.6 kg CO2 eq.
Carbon footprint of the installation phase [A5]	0 kg CO2 eq.
Carbon footprint of the use phase [B2, B3, B4, B6]	8 739 kg CO2 eq.
Carbon footprint of the end-of-life phase [C1 to C4]	0.5 kg CO2 eq.

Use Better



Materials and Substances

Packaging without single use plastic	No
EU RoHS Directive	Compliant with Exemptions
REACH Regulation	REACH Declaration

Use Longer




Lifetime extension

Repair	No
--------	----

Use Again



Repack and remanufacture

End of life manual availability	End of Life Information
Take-back	No
WEEE Label	 The product must be disposed on European Union markets following specific waste collection and never end up in rubbish bins