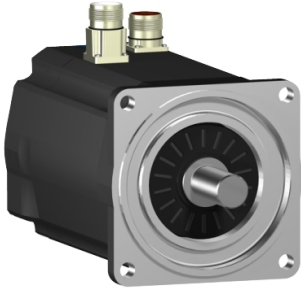


# Product data sheet

Specifications



## SH3 servomotor, 140mm, 1 stack, high Torque, smooth Shaft, SinCos Multiturn 128, Brake, straight, IP65/65

SH31401M02F1100

! Discontinued

! Discontinued on: Jul 23, 2025

! End-of-service on: Dec 31, 2025

### Main

Range compatibility	PacDrive 3
Device short name	SH3
Product or component type	Servo motor

### Complementary

Maximum mechanical speed	4000 rpm
[Us] rated supply voltage	115...480 V
Network number of phases	Three phase
Continuous stall current	4 A
Continuous stall torque	98.2 lbf.in (11.1 N.m) 115...480 V three phase
Continuous power	1700 W
Peak stall torque	239.0 lbf.in (27 N.m) 115...480 V three phase
Nominal output power	430 W 115 V single phase 860 W 230 V single phase 1670 W 400 V three phase 1960 W 480 V three phase
Nominal torque	97.4 lbf.in (11 N.m) 115 V single phase 96.92 lbf.in (10.95 N.m) 230 V single phase 93.8 lbf.in (10.6 N.m) 400 V three phase 92.05 lbf.in (10.4 N.m) 480 V three phase
Nominal speed	375 rpm 115 V single phase 750 rpm 230 V single phase 1500 rpm 400 V three phase 1800 rpm 480 V three phase
Maximum current Irms	10.8 A
Shaft end	Smooth shaft
Shaft diameter	0.9 in (24 mm)
Shaft length	2.0 in (50 mm)
Key width	0.3 in (8 mm)
IP degree of protection	IP65 motor: conforming to IEC 60034-5 IP65 shaft bushing: conforming to IEC 60034-5
Encoder type	Absolute multiturn SinCos Hiperface
Speed feedback resolution	128 periods
Holding brake	With

<b>Holding torque</b>	203.6 lbf.in (23 N.m)
<b>Mounting support</b>	International standard flange
<b>Motor flange size</b>	5.5 in (140 mm)
<b>Electrical connection</b>	Rotatable right angled connector
<b>Torque constant</b>	2.78 N.m/A 248 °F (120 °C)
<b>Back emf constant</b>	193 V/krpm 68 °F (20 °C)
<b>Number of motor poles</b>	5
<b>Rotor inertia</b>	9.21 kg.cm <sup>2</sup>
<b>Stator resistance</b>	5.3 Ohm
<b>Stator inductance</b>	88.55 mH
<b>Maximum radial force Fr</b>	1930 N 1000 rpm 1530 N 2000 rpm 1340 N 3000 rpm
<b>Maximum axial force Fa</b>	300 N
<b>Type of cooling</b>	Natural convection
<b>Length</b>	10.06 in (255.5 mm)
<b>Centring collar diameter</b>	5.1 in (130 mm)
<b>Centring collar depth</b>	0.1 in (3.5 mm)
<b>Number of mounting holes</b>	4
<b>Mounting holes diameter</b>	0.4 in (11 mm)
<b>Circle diameter of the mounting holes</b>	6.5 in (165 mm)
<b>Net weight</b>	28.7 lb(US) (13 kg)
<b>Sizing reference</b>	SH31401M
<b>Network number of phases</b>	3
<b>Temperature copper hot</b>	266 °F (130 °C)
<b>Electrical connection</b>	straight connector

## Packing Units

<b>Unit Type of Package 1</b>	PCE
<b>Number of Units in Package 1</b>	1

## Contractual warranty

<b>Warranty (in months)</b>	18
-----------------------------	----



## Environmental Data

Schneider Electric aims to achieve Net Zero status by 2050 through supply chain partnerships, lower impact materials, and circularity via our ongoing “Use Better, Use Longer, Use Again” campaign to extend product lifetimes and recyclability.

[Environmental Data explained >](#)

[How we assess product sustainability >](#)

### Use Better



#### Materials and Substances

Packaging made with recycled cardboard **Yes**

Packaging without single use plastic **No**

### Use Longer



#### Lifetime extension

Repair **No**

### Use Again



#### Repack and remanufacture

Take-back **Nej**