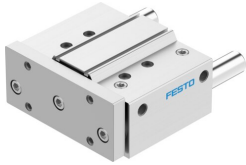


# Guided drive DFM-80-80-P-A-GF

Part number: 170887

FESTO



 [General operating condition](#)

## Data sheet

Feature	Value
Distance of centre of gravity of payload to yoke plate xs	125 mm
Stroke	80 mm
Piston diameter	80 mm
Drive unit operating mode	Yoke
Cushioning	Elastic cushioning rings/pads at both ends
Mounting position	Any
Guide	Plain-bearing guide
Structural design	Guide
Position sensing	Via proximity switch
Symbol	00991737
Operating pressure	0.05 MPa ... 1 MPa
Operating pressure	0.5 bar ... 10 bar
Max. speed	0.4 m/s
Mode of operation	Double-acting
Operating medium	Compressed air as per ISO 8573-1:2010 [7:4:4]
Information on operating and pilot media	Operation with oil lubrication possible (required for further use)
Corrosion resistance class (CRC)	1 - Low corrosion stress
LABS (PWIS) conformity	VDMA24364-B1/B2-L
Cleanroom suitability, measured according to ISO 14644-14	Class 6 according to ISO 14644-1
Ambient temperature	-20 °C ... 80 °C
Impact energy in the end positions	0.75 J
Max. force Fy	2320 N
Max. force Fy static	2320 N
Max. force Fz	2320 N
Max. force Fz static	2320 N
Max. torque Mx	179.8 Nm
Max. static moment Mx	179.8 Nm
Max. torque My	126.4 Nm
Max. static moment My	126.4 Nm
Max. torque Mz	126.4 Nm
Max. static moment Mz	126.4 Nm
Max. permissible torque load Mx as a function of the stroke	40.34 Nm
Max. payload as a function of the stroke at defined distance xs	352 N
Theoretical force at 6 bar, retracting	2827 N
Theoretical force at 6 bar, advancing	3016 N
Moving mass	5461 g

<b>Feature</b>	<b>Value</b>
Product weight	9743 g
Alternative connections	See product drawing
Pneumatic connection	G3/8
Note on materials	RoHS compliant
Cover material	Wrought aluminum alloy
Seals material	NBR
Housing material	Wrought aluminum alloy
Piston rod material	high-alloy stainless steel