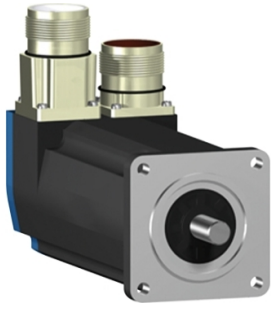


Product data sheet

Specifications



servo motor BSH, Lexium 05,
0.5N.m, 8000rpm, 55mm, untapped
shaft, Sincos single turn, without
brake, IP65, straight

BSH0551T21A1A

! Discontinued

! Discontinued on: Jun 30, 2023

Main

Device short name	BSH
Product or component type	Servo motor
Maximum mechanical speed	9000 rpm
Continuous stall torque	4.4 lbf.in (0.5 N.m) LXM32.U90M2 3 A, 115 V, single phase 4.4 lbf.in (0.5 N.m) LXM32.U45M2 1.5 A, 230 V, single phase 4.4 lbf.in (0.5 N.m) LXM05CU70M2, 200...240 V, single phase 4.4 lbf.in (0.5 N.m) LXM05AD10F1, 110...120 V, single phase 4.4 lbf.in (0.5 N.m) LXM05AD10M2, 200...240 V, single phase 4.4 lbf.in (0.5 N.m) LXM05BD10F1 1.5 A, 110...120 V, single phase 4.4 lbf.in (0.5 N.m) LXM05BD10M2, 200...240 V, single phase 4.4 lbf.in (0.5 N.m) LXM05CD10F1, 110...120 V, single phase 4.4 lbf.in (0.5 N.m) LXM05CD10M2, 200...240 V, single phase 4.4 lbf.in (0.5 N.m) LXM15LD13M3, 230 V, three phase 4.4 lbf.in (0.5 N.m) LXM05AD10M3X, 200...240 V, three phase 4.4 lbf.in (0.5 N.m) LXM05BD10M3X, 200...240 V, three phase 4.4 lbf.in (0.5 N.m) LXM05CD10M3X, 200...240 V, three phase
Peak stall torque	13.3 lbf.in (1.5 N.m) LXM32.U90M2 3 A, 115 V, single phase 12.4 lbf.in (1.4 N.m) LXM32.U45M2 1.5 A, 230 V, single phase 9.56 lbf.in (1.08 N.m) LXM05CU70M2, 200...240 V, single phase 12.4 lbf.in (1.4 N.m) LXM05AD10F1, 110...120 V, single phase 12.4 lbf.in (1.4 N.m) LXM05AD10M2, 200...240 V, single phase 12.4 lbf.in (1.4 N.m) LXM05BD10F1 1.5 A, 110...120 V, single phase 12.4 lbf.in (1.4 N.m) LXM05BD10M2, 200...240 V, single phase 12.4 lbf.in (1.4 N.m) LXM05CD10F1, 110...120 V, single phase 12.4 lbf.in (1.4 N.m) LXM05CD10M2, 200...240 V, single phase 10.97 lbf.in (1.24 N.m) LXM15LD13M3, 230 V, three phase 12.4 lbf.in (1.4 N.m) LXM05AD10M3X, 200...240 V, three phase 12.4 lbf.in (1.4 N.m) LXM05BD10M3X, 200...240 V, three phase 12.4 lbf.in (1.4 N.m) LXM05CD10M3X, 200...240 V, three phase
Nominal output power	150 W LXM32.U90M2 3 A, 115 V, single phase 300 W LXM32.U45M2 1.5 A, 230 V, single phase 150 W LXM05AD10F1, 110...120 V, single phase 150 W LXM05BD10F1, 110...120 V, single phase 150 W LXM05CD10F1, 110...120 V, single phase 150 W LXM05CU70M2 1.5 A, 200...240 V, single phase 270 W LXM05AD10M2, 200...240 V, single phase 270 W LXM05BD10M2, 200...240 V, single phase 270 W LXM05CD10M2, 200...240 V, single phase 270 W LXM05AD10M3X, 200...240 V, three phase 270 W LXM05BD10M3X, 200...240 V, three phase 270 W LXM05CD10M3X, 200...240 V, three phase 340 W LXM15LD13M3, 230 V, three phase

Disclaimer: This documentation is not intended as a substitute for and is not to be used for determining suitability or reliability of these products for specific user applications

Nominal torque	<p>4.34 lbf.in (0.49 N.m) LXM32.U90M2 3 A, 115 V, single phase 3.98 lbf.in (0.45 N.m) LXM32.U45M2 1.5 A, 230 V, single phase 3.81 lbf.in (0.43 N.m) LXM05AD10M2, 200...240 V, single phase 3.81 lbf.in (0.43 N.m) LXM05BD10M2, 200...240 V, single phase 3.81 lbf.in (0.43 N.m) LXM05CD10M2, 200...240 V, single phase 4.07 lbf.in (0.46 N.m) LXM05AD10F1 1.5 A, 110...120 V, single phase 4.07 lbf.in (0.46 N.m) LXM05BD10F1, 110...120 V, single phase 4.07 lbf.in (0.46 N.m) LXM05CD10F1, 110...120 V, single phase 4.07 lbf.in (0.46 N.m) LXM05CU70M2, 200...240 V, single phase 3.63 lbf.in (0.41 N.m) LXM15LD13M3, 230 V, three phase 3.81 lbf.in (0.43 N.m) LXM05AD10M3X, 200...240 V, three phase 3.81 lbf.in (0.43 N.m) LXM05BD10M3X, 200...240 V, three phase 3.81 lbf.in (0.43 N.m) LXM05CD10M3X, 200...240 V, three phase</p>
-----------------------	---

Nominal speed	<p>3000 rpm LXM32.U90M2 3 A, 115 V, single phase 6000 rpm LXM32.U45M2 1.5 A, 230 V, single phase 3000 rpm LXM05AD10F1, 110...120 V, single phase 3000 rpm LXM05BD10F1, 110...120 V, single phase 3000 rpm LXM05CD10F1, 110...120 V, single phase 3000 rpm LXM05CU70M2 1.5 A, 200...240 V, single phase 6000 rpm LXM05AD10M2, 200...240 V, single phase 6000 rpm LXM05BD10M2, 200...240 V, single phase 6000 rpm LXM05CD10M2, 200...240 V, single phase 6000 rpm LXM05AD10M3X, 200...240 V, three phase 6000 rpm LXM05BD10M3X, 200...240 V, three phase 6000 rpm LXM05CD10M3X, 200...240 V, three phase 8000 rpm LXM15LD13M3, 230 V, three phase</p>
----------------------	---

Product compatibility	<p>LXM05AD10F1 110...120 V single phase LXM05AD10M2 200...240 V single phase LXM05BD10F1 110...120 V single phase LXM05BD10M2 200...240 V single phase LXM05CD10F1 110...120 V single phase LXM05CD10M2 200...240 V single phase LXM05CU70M2 200...240 V single phase LXM32.U90M2 115 V single phase LXM32.U45M2 230 V single phase LXM05AD10M3X 200...240 V three phase LXM05BD10M3X 200...240 V three phase LXM05CD10M3X 200...240 V three phase LXM15LD13M3 230 V three phase</p>
------------------------------	--

Shaft end	Untapped
------------------	----------

IP degree of protection	<p>IP65 standard IP67 with IP67 kit</p>
--------------------------------	--

Speed feedback resolution	131072 points/turn
----------------------------------	--------------------

Holding brake	Without
----------------------	---------

Mounting support	International standard flange
-------------------------	-------------------------------

Electrical connection	Straight connectors
------------------------------	---------------------

Complementary

Range compatibility	<p>Lexium 05 Lexium 15 Lexium 32</p>
----------------------------	--

supply voltage max	480 V
---------------------------	-------

Network number of phases	Three phase
---------------------------------	-------------

Continuous stall current	1.4 A
---------------------------------	-------

maximum continuous power	0.45 W
---------------------------------	--------

Maximum current Irms	6.2 A LXM15LD13M3 5.4 A LXM05AD10F1 5.4 A LXM05CU70M2 5.4 A LXM05AD10M2 5.4 A LXM05AD10M3X 5.4 A LXM05BD10F1 5.4 A LXM05BD10M2 5.4 A LXM05BD10M3X 5.4 A LXM05CD10F1 5.4 A LXM05CD10M2 5.4 A LXM05CD10M3X 5.4 A LXM32.U90M2 4.5 A LXM32.U45M2
Maximum permanent current	5.4 A
Switching frequency	8 kHz
Second shaft	Without second shaft end
Shaft diameter	0.4 in (9 mm)
Shaft length	0.8 in (20 mm)
Feedback type	Single turn SinCos Hiperface
Motor flange size	2.2 in (55 mm)
Number of motor stacks	1
Torque constant	0.36 N.m/A 248 °F (120 °C)
Back emf constant	22 V/krpm 248 °F (120 °C)
Rotor inertia	0.059 kg.cm ²
Stator resistance	12.2 Ohm 68 °F (20 °C)
Stator inductance	20.8 mH 68 °F (20 °C)
Stator electrical time constant	1.7 ms 68 °F (20 °C)
Maximum radial force Fr	170 N 8000 rpm 180 N 7000 rpm 190 N 6000 rpm 200 N 5000 rpm 220 N 4000 rpm 240 N 3000 rpm 270 N 2000 rpm 340 N 1000 rpm
Maximum axial force Fa	0.2 x Fr
Type of cooling	Natural convection
Length	5.2 in (132.5 mm)
Centring collar diameter	1.6 in (40 mm)
Centring collar depth	0.08 in (2 mm)
Number of mounting holes	4
Mounting holes diameter	0.2 in (5.5 mm)
Circle diameter of the mounting holes	2.5 in (63 mm)
Net weight	2.6 lb(US) (1.2 kg)
Sizing reference	BSH0551T
Network number of phases	3
Accuracy error [angular]	1.4 °
Temperature copper hot	248 °F (120 °C)
Temperature magnet hot	212 °F (100 °C)
Temperature magnet rt	68 °F (20 °C)

Packing Units

Unit Type of Package 1	PCE
Number of Units in Package 1	1
Package 1 Height	4.5 in (11.5 cm)
Package 1 Width	7.5 in (19.0 cm)
Package 1 Length	15.6 in (39.5 cm)
Package 1 Weight	28.2 oz (800.0 g)

Contractual warranty

Warranty (in months)	18
----------------------	----



Environmental Data

Schneider Electric aims to achieve Net Zero status by 2050 through supply chain partnerships, lower impact materials, and circularity via our ongoing “Use Better, Use Longer, Use Again” campaign to extend product lifetimes and recyclability.

[Environmental Data explained >](#)

[How we assess product sustainability >](#)

Use Better



Materials and Substances

EU RoHS Directive

[Compliant By Exemption](#)

PVC free

Yes

Use Longer



Lifetime extension

Repair

No

Use Again



Repack and remanufacture

Circularity Profile

No need of specific recycling operations

WEEE Label

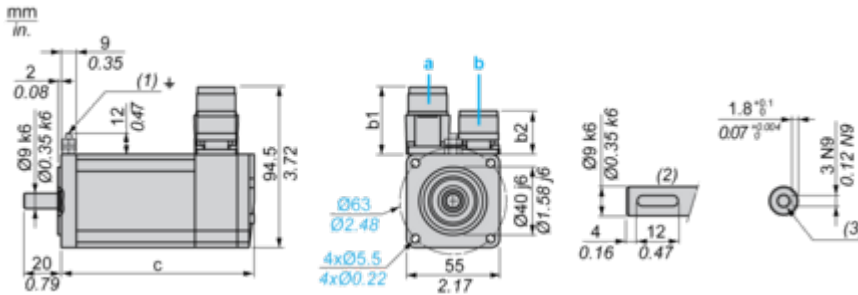


The product must be disposed on European Union markets following specific waste collection and never end up in rubbish bins

Dimensions Drawings

Servo Motors Dimensions

Example with Straight Connectors



- a: Power supply for servo motor brake
- b: Power supply for servo motor encoder
- (1) M4 screw
- (2) Shaft end, keyed slot (optional)
- (3) For screw M3 x 9 mm/M3 x 0.35 in.

Dimensions in mm

Straight connectors		Rotatable angled connectors		c (without brake)	c (with brake)
b	b1	b	b1		
39.5	25.5	39.5	39.5	132.5	159

Dimensions in in.

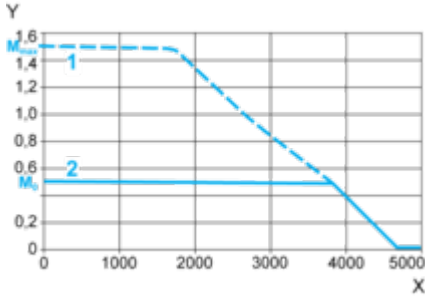
Straight connectors		Rotatable angled connectors		c (without brake)	c (with brake)
b	b1	b	b1		
1.55	1.00	1.55	1.55	5.21	6.25

Performance Curves

115 V Single-Phase Supply Voltage

Torque/Speed Curves

Servo motor with LXM32-U90M2 servo drive



X Speed in rpm

Y Torque in Nm

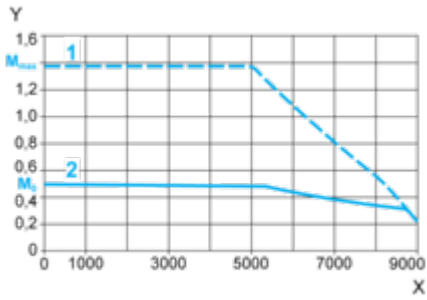
1 Peak torque

2 Continuous torque

230 V Single-Phase Supply Voltage

Torque/Speed Curves

Servo motor with LXM32•U45M2 servo drive



X Speed in rpm

Y Torque in Nm

1 Peak torque

2 Continuous torque