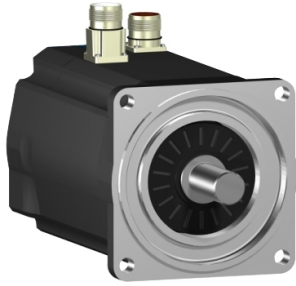


Product data sheet

Specifications



SH3 servomotor, 100mm, 1 stack, keyed Shaft, SinCos Multiturn 128, Brake, straight, IP65/65

SH31001P12F1100

Product availability: Non-Stock - Not normally stocked in distribution facility

Main

Range Compatibility	PacDrive 3
Device short name	SH3
Product or Component Type	Servo motor

Complementary

Maximum mechanical speed	6000 rpm
[Us] rated supply voltage	115...480 V
Phase	Three phase
Continuous stall current	3.5 A
Continuous stall torque	26.02 lbf.in (2.94 N.m) 115...480 V three phase
Continuous power	1190 W
Peak stall torque	85.0 lbf.in (9.6 N.m) 115...480 V three phase
Nominal output power	410 W 115 V single phase 790 W 230 V single phase 1410 W 400 V three phase 1630 W 480 V three phase
Nominal torque	25.76 lbf.in (2.91 N.m) 115 V single phase 23.37 lbf.in (2.64 N.m) 230 V single phase 20.09 lbf.in (2.27 N.m) 400 V three phase 20.09 lbf.in (2.27 N.m) 480 V three phase
Nominal speed	1250 rpm 115 V single phase 2500 rpm 230 V single phase 5000 rpm 400 V three phase 6000 rpm 480 V three phase
Maximum current Irms	12.0 A
Shaft end	Parallel key
Shaft diameter	0.7 in (19 mm)
Shaft length	1.6 in (40 mm)
Key width	0.2 in (6 mm)
IP degree of protection	IP65 motor: conforming to IEC 60034-5 IP65 shaft bushing: conforming to IEC 60034-5
Encoder type	Absolute multiturn SinCos Hiperface
Speed feedback resolution	128 periods
Holding brake	With
Holding torque	79.7 lbf.in (9 N.m)
Mounting Support	International standard flange

Price is "List Price" and may be subject to a trade discount – check with your local distributor or retailer for actual price.

Motor flange size	3.9 in (100 mm)
Electrical Connection	Straight connector
Torque constant	0.84 N.m/A 248 °F (120 °C)
Back emf constant	60 V/krpm 68 °F (20 °C)
Number of motor poles	4.0
Rotor inertia	2.018 kg.cm ²
Stator resistance	3.8 Ohm
Stator inductance	9.5 mH
Maximum radial force Fr	900 N 1000 rpm 720 N 2000 rpm 630 N 3000 rpm 570 N 4000 rpm 530 N 5000 rpm
Maximum axial force Fa	160 N
Type of cooling	Natural convection
Length	7.9 in (199.5 mm)
Centring collar diameter	3.7 in (95 mm)
Centring collar depth	0.1 in (3.5 mm)
Number of mounting holes	4
Mounting holes diameter	0.4 in (9.0 mm)
Circle diameter of the mounting holes	4.5 in (115 mm)
Net Weight	10.6 lb(US) (4.8 kg)
Sizing reference	SH31001P
Network number of phases	3
Temperature copper hot	266 °F (130 °C)
Electrical connection	straight connector
Output current 3s peak	12.0 A
Inertia	0.618 kg.cm ² of brake 1.4 kg.cm ² of motor

Ordering and shipping details

Category	US1PC5218359
Discount Schedule	PC52
GTIN	3606481972323
Returnability	No
Country of origin	DE

Packing Units

Unit Type of Package 1	PCE
Nbr. of units in pkg.	1
Package 1 Height	14.02 in (35.6 cm)
Package 1 Width	7.09 in (18 cm)
Package 1 Length	8.3 in (21 cm)

Package weight(Lbs) 12.50 lb(US) (5.67 kg)

Contractual warranty

Warranty (in months) 18



Environmental Data

Schneider Electric aims to achieve Net Zero status by 2050 through supply chain partnerships, lower impact materials, and circularity via our ongoing “Use Better, Use Longer, Use Again” campaign to extend product lifetimes and recyclability.

[Environmental Data explained >](#)

[How we assess product sustainability >](#)

Use Better

Materials and Substances	
Packaging made with recycled cardboard	Yes
Packaging without single use plastic	No
EU RoHS Directive	Pro-active compliance (Product out of EU RoHS legal scope)
SCIP Number	Ead0850d-370a-47c5-8cf7-1d93c2c974a4
REACH Regulation	REACH Declaration
California proposition 65	WARNING: This product can expose you to chemicals including: Lead and lead compounds, which is known to the State of California to cause cancer and birth defects or other reproductive harm. For more information go to www.P65Warnings.ca.gov
PVC free	Yes

Use Longer

Lifetime extension	
Repair	No

Use Again

Repack and remanufacture	
Circularity Profile	No need of specific recycling operations
Take-back	No