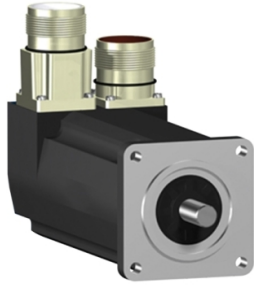


# Product data sheet

Specifications



## SH3 servomotor, 55mm, 1 stack, keyed Shaft, SinCos Singleturn 128, no Brake, straight, IP54/65

SH30551P11A1000

! Discontinued

! Discontinued on: Jul 23, 2025

! End-of-service on: Dec 31, 2025

## Main

Range compatibility	PacDrive 3
Device short name	SH3
Product or component type	Servo motor

## Complementary

Maximum mechanical speed	9000 rpm
[Us] rated supply voltage	115...480 V
Network number of phases	Three phase
Continuous stall current	0.73 A
Continuous stall torque	3.72 lbf.in (0.42 N.m) 115...480 V three phase
Continuous power	290 W
Peak stall torque	13.3 lbf.in (1.5 N.m) 115...480 V three phase
Nominal output power	100 W 115 V single phase 210 W 230 V single phase 400 W 400 V three phase 440 W 480 V three phase
Nominal torque	4.4 lbf.in (0.5 N.m) 115 V single phase 4.4 lbf.in (0.5 N.m) 230 V single phase 3.10 lbf.in (0.35 N.m) 400 V three phase 3.10 lbf.in (0.35 N.m) 480 V three phase
Nominal speed	2000 rpm 115 V single phase 4000 rpm 230 V single phase 8000 rpm 400 V three phase 8000 rpm 480 V three phase
Maximum current I <sub>rms</sub>	2.9 A
Shaft end	Parallel key
Shaft diameter	0.4 in (9 mm)
Shaft length	0.8 in (20 mm)
Key width	0.1 in (3 mm)
IP degree of protection	IP54 shaft bushing without shaft seal ring: conforming to IEC 60034-5 IP65 motor: conforming to IEC 60034-5 IP65 shaft bushing: conforming to IEC 60034-5
Encoder type	Absolute single turn SinCos Hiperface
Speed feedback resolution	128 periods
Holding brake	Without

<b>Mounting support</b>	International standard flange
<b>Motor flange size</b>	2.2 in (55 mm)
<b>Electrical connection</b>	Rotatable right angled connector
<b>Torque constant</b>	0.58 N.m/A 248 °F (120 °C)
<b>Back emf constant</b>	40 V/krpm 68 °F (20 °C)
<b>Number of motor poles</b>	3.0
<b>Rotor inertia</b>	0.059 kg.cm <sup>2</sup>
<b>Stator resistance</b>	41.8 Ohm
<b>Stator inductance</b>	108.72 mH
<b>Maximum radial force Fr</b>	340 N 1000 rpm 270 N 2000 rpm 240 N 3000 rpm 220 N 4000 rpm 200 N 5000 rpm 190 N 6000 rpm 180 N 7000 rpm 170 N 8000 rpm
<b>Maximum axial force Fa</b>	40 N
<b>Type of cooling</b>	Natural convection
<b>Length</b>	5.2 in (132.5 mm)
<b>Centring collar diameter</b>	1.6 in (40 mm)
<b>Centring collar depth</b>	0.08 in (2 mm)
<b>Number of mounting holes</b>	4
<b>Mounting holes diameter</b>	0.2 in (5.5 mm)
<b>Circle diameter of the mounting holes</b>	2.5 in (63 mm)
<b>Net weight</b>	2.6 lb(US) (1.2 kg)
<b>Sizing reference</b>	SH30551P
<b>Network number of phases</b>	3
<b>Temperature copper hot</b>	266 °F (130 °C)
<b>Electrical connection</b>	straight connector
<b>Output current 3s peak</b>	2.9 A
<b>Inertia</b>	0.0 kg.cm <sup>2</sup> of brake 0.0 kg.cm <sup>2</sup> of motor

## Packing Units

<b>Unit Type of Package 1</b>	PCE
<b>Number of Units in Package 1</b>	1
<b>Package 1 Height</b>	0.4 in (1 cm)
<b>Package 1 Width</b>	0.4 in (1 cm)
<b>Package 1 Length</b>	0.4 in (1 cm)
<b>Package 1 Weight</b>	2.2 lb(US) (1 kg)

## Contractual warranty

<b>Warranty (in months)</b>	18
-----------------------------	----



## Environmental Data

Schneider Electric aims to achieve Net Zero status by 2050 through supply chain partnerships, lower impact materials, and circularity via our ongoing “Use Better, Use Longer, Use Again” campaign to extend product lifetimes and recyclability.

[Environmental Data explained >](#)

[How we assess product sustainability >](#)

### Use Better



#### Materials and Substances

PVC free

Yes

### Use Longer



#### Lifetime extension

Repair

No

### Use Again



#### Repack and remanufacture

Circularity Profile

No need of specific recycling operations