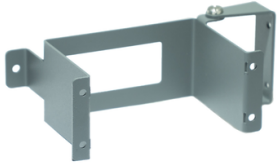


# Product datasheet

Specifications



## Adapter for P111 to allow mounting the relay on a wall

REL10030

⚠ Discontinued on: 15 Jun 2023

⚠ Discontinued

### Packing Units

Unit Type of Package 1	PCE
Number of Units in Package 1	1
Package 1 Height	16.5 cm
Package 1 Width	16.5 cm
Package 1 Length	22.5 cm
Package 1 Weight	415.0 g
Unit Type of Package 2	S04
Number of Units in Package 2	6
Package 2 Height	30.0 cm
Package 2 Width	40.0 cm
Package 2 Length	60.0 cm
Package 2 Weight	3.256 kg

### Contractual warranty

Warranty (in months)	18
----------------------	----

Excluding VAT and subject to change. Please check with your local distributor through "Where to buy"



## Environmental Data

Schneider Electric aims to achieve Net Zero status by 2050 through supply chain partnerships, lower impact materials, and circularity via our ongoing “Use Better, Use Longer, Use Again” campaign to extend product lifetimes and recyclability.

[Environmental Data explained >](#)

[How we assess product sustainability >](#)

### Use Longer



#### Lifetime extension

Repair

No