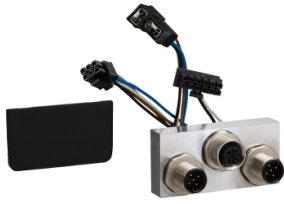


# Product datasheet

Specifications



## Insert for communication interface - 4 I/O - PROFIBUS

VW3L4S0001

⚠ Discontinued on: 23 Jan 2021

⚠ Discontinued

### Main

Range of product	Lexium integrated drive
Product or component type	Insert for communication interface
Accessory / separate part type	Connection accessories
Accessory / separate part category	Connection accessories
Accessory / separate part destination	For drives

### Complementary

Net weight	0.05 kg
------------	---------

### Packing Units

Unit Type of Package 1	PCE
Number of Units in Package 1	1
Package 1 Height	3 cm
Package 1 Width	18 cm
Package 1 Length	27 cm
Package 1 Weight	60 g

### Contractual warranty

Warranty (in months)	18
----------------------	----

Disclaimer: This documentation is not intended as a substitute for and is not to be used for determining suitability or reliability of these products for specific user applications



## Environmental Data

Schneider Electric aims to achieve Net Zero status by 2050 through supply chain partnerships, lower impact materials, and circularity via our ongoing “Use Better, Use Longer, Use Again” campaign to extend product lifetimes and recyclability.

[Environmental Data explained >](#)

[How we assess product sustainability >](#)

### Use Better



#### Materials and Substances

EU RoHS Directive

[Compliant](#)

PVC free

Yes

### Use Longer



#### Lifetime extension

Repair

No