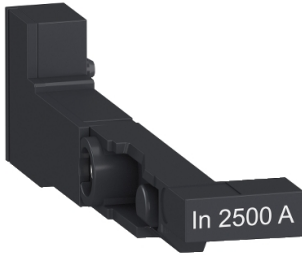


Product data sheet

Specifications

SQUARE D



Circuit breaker accessory,
MasterPacT NT/NW, sensor plug,
2500A

S47822

Main

Range of product	MasterPact NT MasterPact NW
Product or component type	Sensor plug
Circuit breaker type	Y-frame

Complementary

[In] rated current	2500 A
--------------------	--------

Packing Units

Unit Type of Package 1	PCE
Number of Units in Package 1	1
Package 1 Height	4.0 in (10.1 cm)
Package 1 Width	6.0 in (15.2 cm)
Package 1 Length	4.0 in (10.1 cm)
Package 1 Weight	4.000 oz (113.398 g)

Contractual warranty

Warranty (in months)	18
----------------------	----

Disclaimer: This documentation is not intended as a substitute for and is not to be used for determining suitability or reliability of these products for specific user applications



Environmental Data

Schneider Electric aims to achieve Net Zero status by 2050 through supply chain partnerships, lower impact materials, and circularity via our ongoing “Use Better, Use Longer, Use Again” campaign to extend product lifetimes and recyclability.

[Environmental Data explained >](#)

[How we assess product sustainability >](#)

Use Better



Materials and Substances

Packaging made with recycled cardboard	No
Packaging without single use plastic	No
EU RoHS Directive	Compliant

Use Longer



Lifetime extension

Repair	No
--------	----

Use Again



Repack and remanufacture

Take-back	Nej
-----------	-----