



plug-in relay complete unit, 2 changeover contacts, 24 V AC, LED module red, standard plug-in socket screw terminal, 3.5 mm pinning

product brand name	SIRIUS
product designation	Coupling relay with plug-in relay
product type designation	LZS
<b>General technical data</b>	
display version LED	Yes
percental drop-out voltage related to the input voltage	15 %
operating frequency without load	36 000 1/h
operating frequency with load	360 1/h
switching behavior	monostable
mechanical service life (operating cycles) typical	5 000 000
electrical endurance (operating cycles) at AC-15 at 230 V typical	80 000
thermal current	8 A
reference code according to IEC 81346-2	K
Substance Prohibitance (day/month/year)	05/01/2012
Net Weight	56.399 g
<b>Control circuit/ Control</b>	
control supply voltage at AC	
• at 50 Hz rated value	24 V
• at 60 Hz rated value	24 V
control supply voltage frequency	
• 1 rated value	50 Hz
• 2 rated value	60 Hz
supply voltage frequency for auxiliary and control circuit rated value	50 ... 60 Hz
operating range factor control supply voltage rated value at AC at 50 Hz	
• initial value	0.9
• full-scale value	1.1
operating range factor control supply voltage rated value at AC at 60 Hz	
• initial value	0.9
• full-scale value	1.1
<b>Switching Function</b>	
design of the switching function	changeover switch
<b>Mechanical data</b>	
product component plug-in socket	Yes
design of the snap-on socket base	Standard socket
design of the relay operating mechanism	poled
<b>Short-circuit protection</b>	
design of the fuse link for short-circuit protection of the auxiliary	fuse gG: 10 A

switch required		
<b>Auxiliary circuit</b>		
<b>type of switching contact</b>	Changeover contact	
<b>material of switching contacts</b>	AgNi 90/10	
<b>number of NC contacts for auxiliary contacts</b>	0	
<b>number of NO contacts for auxiliary contacts</b>	0	
number of CO contacts for auxiliary contacts	2	
<b>Main circuit</b>		
<b>type of voltage</b>	AC	
<b>Display</b>		
display version as status display by LED	LED red	
<b>Connections/ Terminals</b>		
<b>product function removable terminal</b>	No	
<b>type of electrical connection</b>	screw terminal	
<b>type of connectable conductor cross-sections</b>		
• solid	1x (1,0 ... 2,5), 2x 1,0, 2x 1,5, 2x 2,5	
• finely stranded with core end processing	1x (1,0 ... 1,5), 2x 1,0, 2x 1,5	
• for AWG cables solid	1x (18 ... 14), 2x 18, 2x 16, 2x 14	
<b>connectable conductor cross-section</b>		
• solid	1 ... 2.5 mm <sup>2</sup>	
• finely stranded with core end processing	1 ... 1.5 mm <sup>2</sup>	
<b>AWG number as coded connectable conductor cross section</b>		
• solid	18 ... 14	
tightening torque with screw-type terminals	0.5 ... 0.7 N·m	
<b>Installation/ mounting/ dimensions</b>		
<b>mounting position</b>	any	
<b>fastening method</b>	snap-on mounting	
<b>height</b>	78 mm	
<b>width</b>	15.5 mm	
<b>depth</b>	71 mm	
<b>required spacing</b>		
• with side-by-side mounting		
— forwards	0 mm	
— backwards	0 mm	
— upwards	0 mm	
— downwards	0 mm	
— at the side	0 mm	
• for grounded parts		
— forwards	0 mm	
— backwards	0 mm	
— upwards	0 mm	
— at the side	0 mm	
— downwards	0 mm	
• for live parts		
— forwards	0 mm	
— backwards	0 mm	
— upwards	0 mm	
— downwards	0 mm	
— at the side	0 mm	
<b>Ambient conditions</b>		
<b>ambient temperature</b>		
• during operation	-40 ... +70 °C	
• during storage	-20 ... +70 °C	
• during transport	-20 ... +70 °C	
<b>Approvals Certificates</b>		
<b>Environment</b>	<b>General Product Approval</b>	<b>Test Certificates</b>



other

[Confirmation](#)

[Confirmation](#)



Further information

Information on the packaging

<https://support.industry.siemens.com/cs/ww/en/view/109813875>

Information for data generation and storage

<https://support.industry.siemens.com/cs/ww/en/view/109995012>

Information- and Downloadcenter (Catalogs, Brochures,...)

<https://www.siemens.com/ic10>

Industry Mall (Online ordering system)

<https://mall.industry.siemens.com/mall/en/en/Catalog/product?mlfb=LZS:RT4A4R24>

Cax online generator

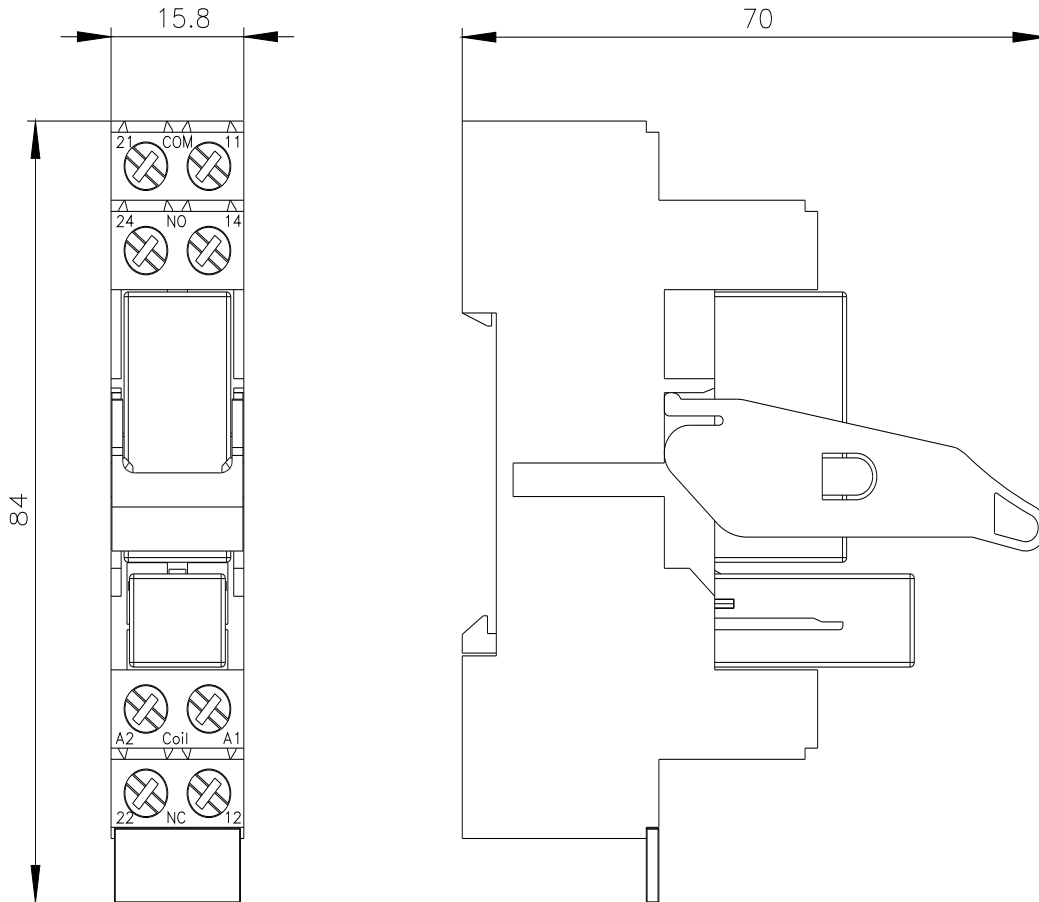
<https://support.automation.siemens.com/WW/CAXorder/default.aspx?lang=en&mlfb=LZS:RT4A4R24>

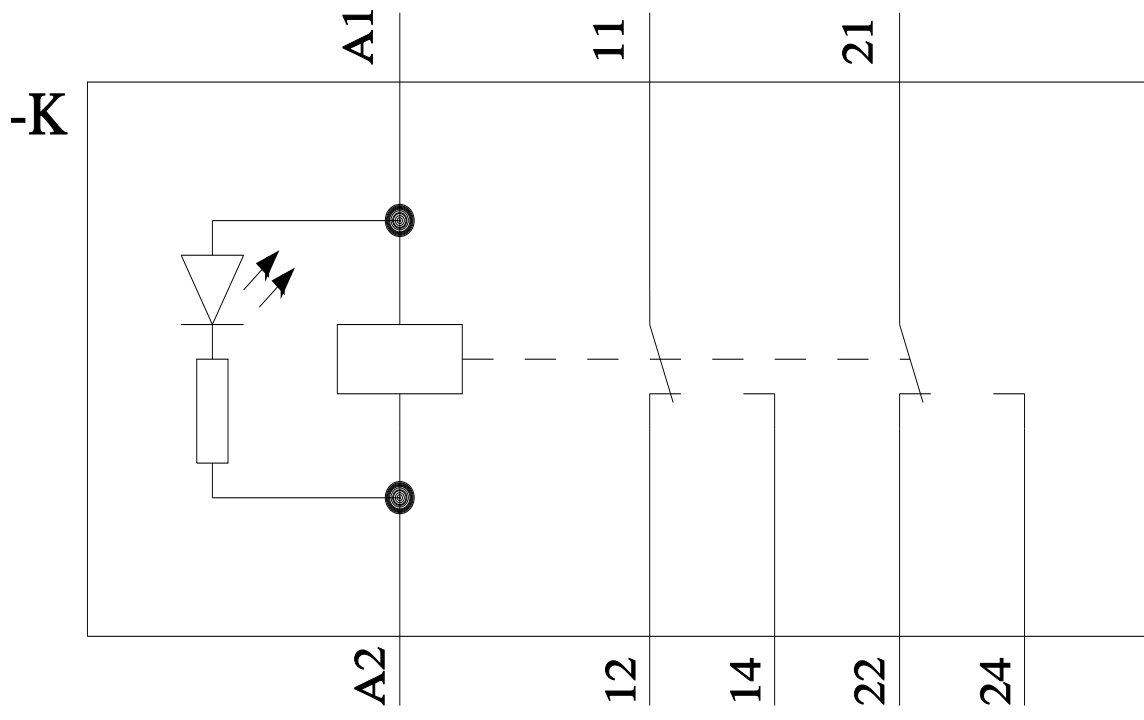
Service&Support (Manuals, Certificates, Characteristics, FAQs,...)

<https://support.industry.siemens.com/cs/ww/en/ps/LZS:RT4A4R24>

Image database (product images, 2D dimension drawings, 3D models, device circuit diagrams, EPLAN macros, ...)

[https://www.automation.siemens.com/bilddb/cax\\_de.aspx?mlfb=LZS:RT4A4R24&lang=en](https://www.automation.siemens.com/bilddb/cax_de.aspx?mlfb=LZS:RT4A4R24&lang=en)





last modified:

4/2/2025