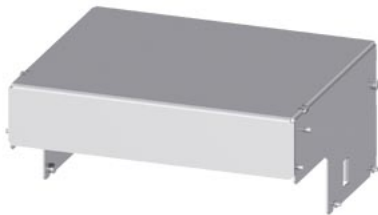




Mounting plate 3WA frame size 1, (3-pole), fixed-mounted, withdrawable, W: 400 mm D: 600 mm



Model		
product brand name	ALPHA 3200 Eco	
product designation	mounting panel	
General technical data		
surface processing	Galvanized	
product feature perforated	Yes	
Mechanical Design		
height	600 mm	
width	400 mm	
depth	600 mm	
Net Weight	4.301 kg	
material	sheet-steel	
Approvals Certificates		
General Product Approval	Test Certificates	other



[Miscellaneous](#)



EG-Konf.

[Confirmation](#)

[Special Test Certificate](#)

[Confirmation](#)

other

Environment



Siemens EcoTech



[Environmental Confirmations](#)

### Further information

- Information on the packaging  
<https://support.industry.siemens.com/cs/ww/en/view/109813875>
- Information for data generation and storage  
<https://support.industry.siemens.com/cs/ww/en/view/109995012>
- Information- and Downloadcenter (Catalogs, Brochures,...)  
<https://www.siemens.com/lowvoltage/catalogs>
- Industry Mall (Online ordering system)  
<https://mall.industry.siemens.com/mall/en/en/Catalog/product?mlfb=8LK5002-1AA52>
- Service&Support (Manuals, Certificates, Characteristics, FAQs,...)  
<https://support.industry.siemens.com/cs/ww/en/ps/8LK5002-1AA52>

Image database (product images, 2D dimension drawings, 3D models, device circuit diagrams, ...)

[https://www.automation.siemens.com/bilddb/cax\\_en.aspx?mlfb=8LK5002-1AA52](https://www.automation.siemens.com/bilddb/cax_en.aspx?mlfb=8LK5002-1AA52)

**CAX-Online-Generator**

<https://www.siemens.com/cax>

**Tender specifications**

<https://www.siemens.com/specifications>

**Characteristic curves**

[https://curves.simaris.siemens.com/curves/<mmp\\_prod\\_noCOMP="HAUPT"></mmp\\_prod\\_no>](https://curves.simaris.siemens.com/curves/<mmp_prod_noCOMP=)

---

last modified:

6/12/2025 

