



**We are  
India's first  
servo motor tester.**

**We are also requested by other manufactures to perform  
warranty and non warranty service for their  
products.**

- DRIVES**
- PLC**
- HMI**
- SERVO MOTOR**
- SERVO DRIVE**
- VFD**
- PCB**
- DRIVE REPAIR**
- Retrofit and Upgrade**
- IN - HOUSE REPAIR**
- ON- SITE REPAIR**
- INSTALLATION**

## About Star Automations

Star Automations was established in the year 2000, with a vision of becoming India's single source provider of comprehensive advanced electronics repair, field maintenance services, and spare parts supply. We are a well-reputed service center for "Industrial Electronics Equipment service & Servo Motors." We do new equipment installations, third-party support for upgrades, on-site repair, and maintenance servicing for manufacturing, automotive, plastics, machine tools, oil and gas, offshore platforms, refineries, petrochemical process plants, drilling, petroleum, and subsea operations. We are an authorized sales and service center for industrial automation & instrumentation products. We deal with AC servo systems, AC drives, variable frequency drives, CNC machines, AC inverters, PCB servicing, AC geared motors, PLCs, HMIs, SMPS, sensors, soft starters, speed controllers, BLDC motors, rewinding, encoders, semiconductor devices, and accessories. We have highly skilled and technically trained personnel to meet our client's service requirements. We are a mechatronics & automation engineering company with over two decades of experience in providing innovative & complex electronic hardware repair and maintenance services.

## Our Branches



- 📍 Head Office, Pondicherry (India)
- 📍 Factory, Pondicherry (India)
- 📍 Sub Branch, Chennai (India)
- 📍 Overseas Branch 1 , Bahrain
- 📍 Overseas Branch 2 (England)
- 📍 Overseas Branch 3 (United States of America)

### How to place an order



**+91 - 95855 50104**



**[www.starautomations.com](http://www.starautomations.com)**



**[info@starautomations.com](mailto:info@starautomations.com)**

## What We Do

### Supplying Obsolete Automation Equipment Worldwide:

Our commitment extends beyond borders. We specialize in sourcing and delivering obsolete automation equipment to clients across the globe. Whether it's vintage machinery or elusive components, we bridge the gap by providing these essential parts. Our global network ensures that legacy systems keep running smoothly.

### Buying Surplus Stock of New and Used Parts:

Got surplus inventory? We're all ears! If you have excess PLCs, HMIs, Servo Motors, Servo Drives, or AC Drives, we're interested. Our team purchases these components from various brands, giving them a second life in other systems. Sustainability meets efficiency!

## Reasons to work with Star Automations

### Excellent Customer Support

24 X 7 Free Collection & Delivery  
Worldwide service  
After hours support available  
Multi-lingual employees  
Extensive Knowledge Base

### Exceptional Repair Services

Emergency repair service available  
On-site fault diagnosis and on-site engineers  
Automated state of the art, functional test facilities  
Extensive global repair centre, distributor and support networks

### Efficient Services and Support

Wide range of stocked items  
Complete solution provider for all repairs and supply needs  
Comprehensive multi-site support contracts available  
Significant savings against manufacturer prices

## Our Service

- ⦿ PCB Service
- ⦿ Servo Motor Repair
- ⦿ Power Supply
- ⦿ PLC Repair
- ⦿ Electronic Repairs
- ⦿ Refurbished
- ⦿ Remanufacture
- ⦿ Service Exchange

## Our Categories

- ⦿ CNC
- ⦿ Drive
- ⦿ Encoders
- ⦿ Gear Boxes
- ⦿ HMI & Industrial PC
- ⦿ Monitors
- ⦿ Motors
- ⦿ PLC

## Our Industry Sectors

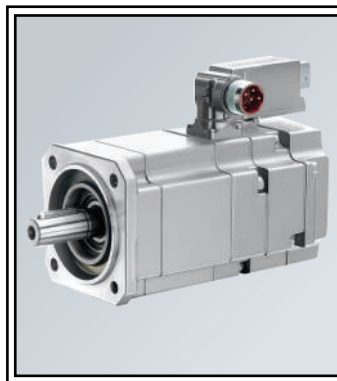
- ⦿ Marine
- ⦿ Defence
- ⦿ Offshore
- ⦿ Railway
- ⦿ Health Care
- ⦿ AirCraft

# SERVO MOTOR



## ALLEN BRADLEY

- VPL Series
- VPC Series
- VPF Series
- MPF Series
- MPS Series
- MPL Series



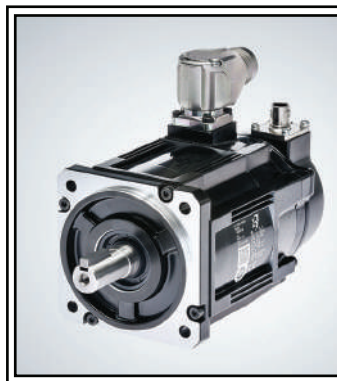
## SIEMENS

- S-1FK2 Series
- S-1FK7 Series
- S-1FT7 Series
- S-1FK2 Series
- S-1FT2 Series
- S-1FT6 Series
- S-1PH8 Series
- S-1FL6 Series



## PANASONIC

- MDMF Series
- MGMF Series
- MHMF Series
- MQMF Series
- MSMF Series



## YASKAWA

- SGMVV Series
- SGMJV Series
- SGMAV Series
- SGMGV Series
- SGMSV Series
- SGMVV Series

## Expertise in repairing

Feedback : encoder / resolver  
tacho / Brake  
Magnets on the rotor  
Balancing the rotor  
Refurbishing damaged housing  
and rotor  
VentilatorandGear

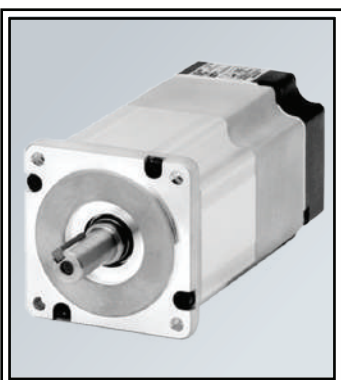
## Testing:

- Measuring / meggering the winding
- Testing the magnetism
- Testing to rqueof the motor when standing still
- Testing the brake
- Testing the feedback using PWM9, PWM20
- Testing the shaft
- Testing on load



## DELTA

- ASDA-A Series
- ASDA-A+ Series
- ASDA-B Series
- ASDA-AB Series



## OMRON

- S-1FL6 Series
- S-1FK7 Series
- S-1FT7 Series
- S-1FG1 Series



## mitsubishi

- HK Series
- HG Series
- HF Series
- HF-KP Series
- TM-RB Series



## SCHNEIDER

- LXM32 Series
- LXM52 Series
- LXM62 Series
- SH3 Series



## ABB

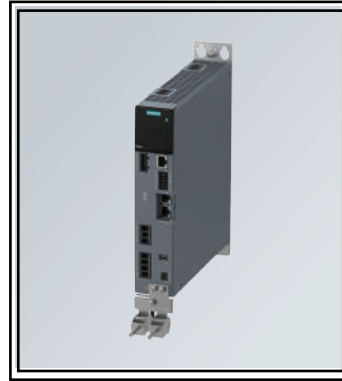
- ESM Series
- HDS Series
- E190 Series
- E180 Series

# SERVO DRIVES



## ALLEN BRADLEY

- Kinetix 5500 Series
- Kinetix RDB Series
- MP Series
- Kinetix 5700 Series



## SIEMENS

- SINAMICS V90
- Simodrive 610 Series
- Simodrive 611 Series
- Simodrive 650 Series
- Simodrive 660 Series
- Simodrive 690 Series
- SINAMICS S200



## PANASONIC

- A6S Series
- A6N Series
- A6B Series
- A6L Series
- LIQI Series



## YASKAWA

- 7 Series
- 5 Series
- 7S Series
- 7C Series
- 7W Series



## DELTA

- ASDA-W3 Series
- ASDA-A3 Series
- ASDA-M Series
- ASDA-A2R Series
- ASDA-B3 Series
- ASDA-B2 Series
- ASDA-E3 Series

## Expertise in repairing

- AC Drives
- DC Drives
- Soft Starters
- Inverters
- VFD

## Testing:

- Testing communication connections
- Testing operator panels, when in stalled
- Testing the control input (Digital and Analog)
- Testing under nominal power using three stage testing
- Test reports are available upon request



## OMRON

- 1S Series
- G5 Series
- Accurax G5 Series



## MITSUBISHI

- MR-J5 Series
- MR-J4 Series
- MR-JE Series
- MR-JE-C Series



## SCHNEIDER

- LXM32 Series
- LXM52 Series
- LXM62<sup>AMP</sup> Series
- SH3 Series



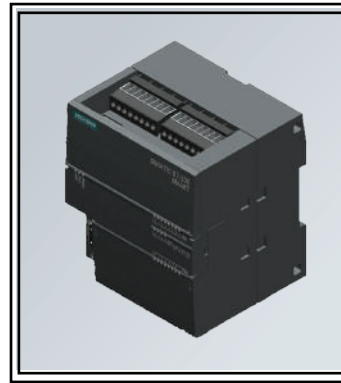
## KEYENCE

- MS2 Series
- SV2 Series
- KV-EPB Series



## ALLEN BRADLEY

- MicroLogix Series
- CompactLogix Series
- ControlLogix Series
- SLC 500 Series
- PLC-5 Series
- Micro800 Series



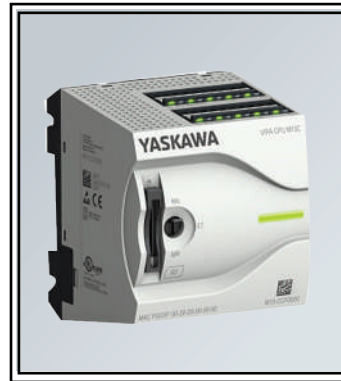
## SIEMENS

- S7-200 Series
- S7-300 Series
- S7-400 Series
- S7-1200 Series
- S7-1500 Series
- S5 Series
- ET 200 Series
- S7-1500T Series



## PANASONIC

- FP-X Series
- FP-XH Series
- FP0R Series
- FP2 Series
- FP2SH Series
- FP0H Series
- FP-X0 Series
- FP7 Series



## YASKAWA

- MP2000 Series
- MP3000 Series
- SLIO Series



## DELTA

- DVP Series
- AS Series
- AH Series
- MH Series
- TP Series

### Expertise in repairing

- CPUs
- I/O modules
- Power supply
- Interface cards
- Programmer devices

### Testing:

- Memory test by loading a program
- Memory test by disconnecting the power
- Controlling the input and output modules.
- Communication modules that are connected to the processor (when necessary).



## OMRON

- CP Series
- CJ Series
- CS Series
- NX Series
- NJ Series
- CPM Series
- SYSMAC Series
- ZEN Series



## MITSUBISHI

- iQ-R Series
- iQ-F Series
- Q Series
- L Series
- F Series
- A Series
- QS/WS Series
- iQ Platform



## SCHNEIDER

- M221 Series
- M241 Series
- M251 Series
- M262 Series
- M340 Series
- M580 Series
- X80 Series



## KEYENCE

- KV-8000 Series
- KV-7000 Series
- KV-5000 Series
- KV-3000 Series
- KV-1000 Series
- KV-P16 Series
- KV-R Series



## ALLEN BRADLEY

- 800 Series
- 5000 Series
- 5500 Series



## SIEMENS

- Basic Panel Series
- Comfort Panel Series
- Mobile Panel Series
- Key Panel Series
- Industrial Panel



## YASKAWA

- MP2000 Series
- MP3000 Series
- SLIO Series



## DELTA

- DOP-B Series
- DOP-W Series
- DOP-H Series
- DOP-M Series
- DOP-G Series
- DOP-100 Series
- DOP-300 Series

**Expertise in repairing**

- Touch screen monitors
- Keypad monitors
- CRT monitors
- Industrial CPU

**Testing:**

- Testing of the button or touch screen
- Testing of the monitor
- Testing the e-communication connections
- Testing I/O modules, when Testing I/O modules, when installed



## PANASONIC

- GT Series
- GTW Series
- FP Series
- GP Series
- FP-E Series
- GT-A Series



## OMRON

- M7 Series
- H7 Series
- NA/NB/NV Series
- NS/NT Series



## MITSUBIHI

- GOT2000 Series
- GOT1000 Series



## SCHNEIDER

- GTU Series
- XBT GH Series
- XBT GT Series
- XBT N/R Series
- SCU Series



## ABB

- CP400 Series
- CP600 Series
- CP600-eCo Series
- HMI5000 Series
- HMI7000 Series
- Panel 800 Series

# POWER SUPPLY



## ALLEN BRADLEY

- 1606-XLS Series
- 1606-XLE Series
- 1606-XLP Series
- 1606-XLB Series
- 1607-XT Series
- 1609 Series



## SIEMENS

- PSU6200 Series
- PSU8600 Series



## YASKAWA

- 1000 Series
- P1000 Series
- GA800 Series

### Expertise in repairing

- Diagnosis and Troubleshooting
- Component Level Repairs
- Circuit Board Repairs
- Replacement of Faulty Parts
- Thorough Testing

### Testing:

- Ensure the power supply is disconnected from the mains power and any load devices
- Check the input and output terminals for proper connections and cleanliness
- Ensure the testing environment is well-ventilated and free from flammable materials
- Set up a multimeter to measure DC voltage.
- Apply a load greater than the rated capacity of the power supply and observe its response
- Reconnect the power supply to the mains power and load devices as needed



## DELTA

- DVP Series
- PMC Series
- CliQ Series
- PMH Series:
- PMR Series
- SMPS Series



## OMRON

- S8VK Series
- S8JX Series
- S82J Series
- S82K Series
- S8TS Series
- S8EX Series



## MITSUBISHI

- Q Series
- FX Series
- L Series
- QnA Series



## ABB

- CP-C Series
- CM Series
- CMP Series
- CP-D Series
- CM-DPS Series



## MEAN WELL

- LRS Series
- RS Series
- NES Series
- SE Series
- IRM Series
- RPS Series
- SD Series
- SP Series



## ALLEN BRADLEY

- 4M Series
- 40 Series
- 523 Series
- 525 Series
- 527 Series
- 753 Series
- 755 Series



## SIEMENS

- G Series
- V20 Series
- G120 Series
- G120X Series
- G120P Series
- G120C Series
- V90 Series

## Expertise in repairing

- Consult the Manual
- Visual Inspection
- Diagnostic Tests
- Component Replacement



## YASKAWA

- A1000 Series
- V1000 Series
- J1000 Series
- V7 Series
- GA800 Series
- U1000 Series

## Testing:

- Verify that the VFD is installed correctly according to the manufacturer's instructions and electrical codes
- Configure the VFD parameters according to the motor specifications and application requirements
- Test the VFD in various operating modes, such as open-loop V/Hz control, vector control, and sensorless vector control
- Test the safety functions, such as emergency stop, motor overload protection, and fault diagnostics
- Measure the energy consumption of the motor under different operating conditions with the VFD



## DELTA

- C2000 Series
- E Series
- L Series
- M Series
- S Series



## OMRON

- RX Series
- MX2 Series
- RX4 Series
- JX Series
- 3G3MX2 Series
- V1000 Series



## MITSUBIHI

- FR-A800 Series
- FR-D700 Series
- FR-F800 Series
- FR-E800 Series
- FR-A700 Series



## SCHNEIDER

- ATV320 Series
- ATV340 Series
- ATV600 Series
- ATV900 Series
- 61 Series
- 71 Series
- ATV3200 Series



## ABB

- ACS880 Series
- ACS580 Series
- ACS380 Series
- ACS355 Series
- ACS310 Series
- ACS150 Series
- ACS55 Series

## OTHER BRANDS PRODUCTS

BRAND	CATEGORY	SERIES / TYPES
<b>EMERSON</b>	SERVO MOTOR	SM Series, FM Series
	SERVO MOTOR	Unidrive Series, Commander Series
<b>XINJE</b>	SERVO MOTOR	ADT-A Series , ADT-C Series, ADT-V Series, ADT-Z Series, ADT-T Series
	PLC	XC Series, XE Series, XE3G Series, XE3G Series, XMP Series, XT Series
<b>SICK</b>	ENCODER	DFS60 Series, AHS/AFS60 Series, AFM60 Series, DFS2 Series, AFS/AFM36 Series
<b>FUJI</b>	SERVO DRIVE	ACE Series, MINI Series, HVAC Series, ECO Series
<b>DANFOSS</b>	SERVO DRIVE	VLT Series, FC Series
<b>FANUC</b>	SERVO DRIVE	Alpha A Series, Alpha I Series, Alpha iS Series, Spindle Drives
	PLC	GE 3/5/6 Series, GE 90-30 Series, GERX 7iPAC System Series, Genius I/O Series
	CNC	16/18/21, Series, Ai16i/18i/21i Series, 0/15/6 Series, 16T Series, 211-TB Series
<b>SEW</b>	VFD	Movi dyn Series, Movi trac Series, Movi drive Series
<b>KEB</b>	VFD	Kombiver Series
<b>B&amp;R</b>	PLC	X20 Series, MA170 Series
	HMI	Panel PC900 Series, Panel PC2100 Series
<b>HONEY WELL</b>	PLC	IPC 620-30 Series, IPC620-20 Series, IPC620-25 Series, IPC620-35 Series

Brands



Allen-Bradley



XINJE

SIEMENS

CLIENTS



MRF

HCL



CEAT



TOYOTA



RENAULT

Honeywell



ABB

OMRON



KEYENCE

