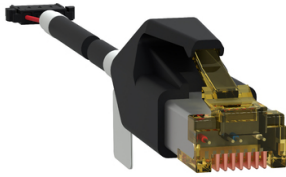


# Product data sheet

Specifications



Circuit breaker accessory, Modbus serial cable, RJ45, 1.30m, less than or equal to 480V

S434222

## Main

Device short name	BSCM MBSL cord 1.3m
Product or component type	Modbus cable
Range compatibility	ComPacT NSX100...250 ComPacT NSX400...630 PowerPact Multistandard PowerPact H PowerPact J PowerPact L

## Complementary

Mounting mode	By clips
Localisation on device	Internal
Connector type	1 RJ45
[Ue] rated operational voltage	<= 480 V
Length	4.3 ft (1.3 m)

## Packing Units

Unit Type of Package 1	PCE
Number of Units in Package 1	1
Package 1 Height	3.03 in (7.7 cm)
Package 1 Width	3.4 in (8.6 cm)
Package 1 Length	6.7 in (16.9 cm)
Package 1 Weight	3.4 oz (96 g)

## Contractual warranty

Warranty (in months)	18
----------------------	----

Disclaimer: This documentation is not intended as a substitute for and is not to be used for determining suitability or reliability of these products for specific user applications



## Environmental Data

Schneider Electric aims to achieve Net Zero status by 2050 through supply chain partnerships, lower impact materials, and circularity via our ongoing “Use Better, Use Longer, Use Again” campaign to extend product lifetimes and recyclability.

[Environmental Data explained >](#)

[How we assess product sustainability >](#)

### Use Better



#### Materials and Substances

Packaging made with recycled cardboard	Yes
Packaging without single use plastic	No
EU RoHS Directive	<a href="#">Compliant</a>
REACH Regulation	<a href="#">Free of Substances of Very High Concern above the threshold</a>
Halogen content performance	Halogen free plastic parts product

### Use Longer



#### Lifetime extension

Repair	No
--------	----

### Use Again



#### Repack and remanufacture

Circularity Profile	No need of specific recycling operations
Take-back	No