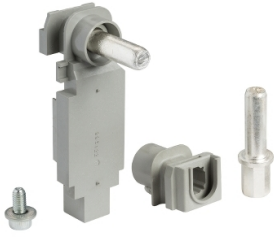


Product datasheet

Specifications



stud for drawout installation - for Vigi NS 100..250 - set of 2

29269

⚠ Discontinued on: 1 Nov 2020

EAN Code: 3303430292692

⚠ Discontinued

Main

Product or component type	Power connections
Accessory / separate part category	Connection accessory
Range compatibility	ComPact ComPact NS circuit breaker
Poles description	3P
Quantity per set	Set of 3

Contractual warranty

Warranty (in months)	18
----------------------	----

Disclaimer: This documentation is not intended as a substitute for and is not to be used for determining suitability or reliability of these products for specific user applications



Environmental Data

Schneider Electric aims to achieve Net Zero status by 2050 through supply chain partnerships, lower impact materials, and circularity via our ongoing “Use Better, Use Longer, Use Again” campaign to extend product lifetimes and recyclability.

[Environmental Data explained >](#)

[How we assess product sustainability >](#)

Use Longer



Lifetime extension

Repair

No

Use Again



Repack and remanufacture

WEEE Label



The product must be disposed on European Union markets following specific waste collection and never end up in rubbish bins