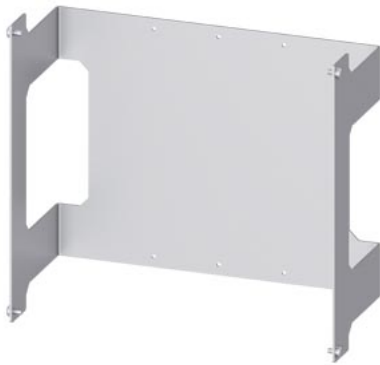




mounting plate 3WL size 0, (3/4-pole), fixed-mounted, W: 400 mm D: 400 mm



Model		
product brand name	ALPHA 3200 Eco	
product designation	mounting panel	
General technical data		
surface processing	Galvanized	
product feature perforated	Yes	
Mechanical Design		
height	600 mm	
width	400 mm	
depth	400 mm	
Net Weight	2.85 kg	
material	sheet-steel	
Approvals Certificates		
General Product Approval	Test Certificates	other



[Miscellaneous](#)



EG-Konf.

[Confirmation](#)

[Special Test Certificate](#)

[Confirmation](#)

other	Environment
-------	-------------



[Environmental Confirmations](#)

Further information

- Information on the packaging
<https://support.industry.siemens.com/cs/ww/en/view/109813875>
- Information for data generation and storage
<https://support.industry.siemens.com/cs/ww/en/view/109995012>
- Information- and Downloadcenter (Catalogs, Brochures,...)
<https://www.siemens.com/lowvoltage/catalogs>
- Industry Mall (Online ordering system)
<https://mall.industry.siemens.com/mall/en/en/Catalog/product?mifb=8LK5002-0AA38>
- Service&Support (Manuals, Certificates, Characteristics, FAQs,...)
<https://support.industry.siemens.com/cs/ww/en/ps/8LK5002-0AA38>

Image database (product images, 2D dimension drawings, 3D models, device circuit diagrams, ...)

https://www.automation.siemens.com/bilddb/cax_en.aspx?mlfb=8LK5002-0AA38

CAX-Online-Generator

<https://www.siemens.com/cax>

Tender specifications

<https://www.siemens.com/specifications>

Characteristic curves

[https://curves.simaris.siemens.com/curves/<mmp_prod_noCOMP="HAUPT"></mmp_prod_no>](https://curves.simaris.siemens.com/curves/<mmp_prod_noCOMP=)

last modified:

4/8/2025 

