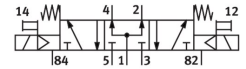
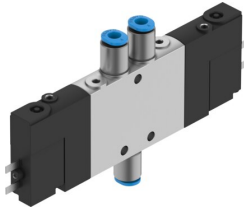


# Air solenoid valve CPE10-M1BH-5/3B-QS6-B

Part number: 533157

FESTO



[General operating condition](#)

## Data sheet

| Feature   | Value  |
|---|--|
| Valve function                                    | 5/3-way, pressurized                               |
| Actuation type                                    | Electrical   |
| Width   | 10 mm  |
| Normal nominal flow rate (normalized to DIN 1343) | 300 l/min  |
| Pneumatic working port                            | QS-6   |
| Operating voltage                                 | 24V DC   |
| Operating pressure                                | 0.3 MPa ... 0.8 MPa                                |
| Operating pressure                                | 3 bar ... 8 bar                                    |
| Structural design                                 | Piston gate valve                                  |
| Reset method                                      | Mechanical spring                                  |
| Certification                                     | c UL us - recognized (OL)                          |
| Maritime classification                           | See certificate                                    |
| Certificate issuing authority                     | DNV-TAA000032X<br>UL MH19482                       |
| Degree of protection                              | IP65<br>With plug socket<br>As per IEC 60529       |
| Nominal width                                     | 4 mm   |
| Exhaust air function                              | Adjustable   |
| Sealing principle                                 | Soft   |
| Mounting position                                 | Any  |
| Manual override                                   | Detenting via accessory<br>Non-detenting           |
| Type of control                                   | Piloted  |
| Pilot air supply port                             | Internal   |
| Flow direction                                    | Non-reversible                                     |
| Symbol  | 00991034   |
| Valve position ID                                 | Label holder                                       |
| Lap   | Positive overlap                                   |
| Switching time off                                | 20 ms  |
| On switching time                                 | 16 ms  |
| Duty cycle  | 100% in combination with holding current reduction |
| Max. positive test pulse with 0 signal            | 1200 µs  |
| Max. negative test pulse on 1 signal              | 900 µs   |
| Coil characteristics                              | 24 V DC: 1.28 W                                    |
| Permissible voltage fluctuations                  | -15% / +10%  |
| Operating medium                                  | Compressed air as per ISO 8573-1:2010 [7:4:4]      |

| Feature                                  | Value  |
|--|--|
| Information on operating and pilot media | Operation with oil lubrication possible (required for further use)                   |
| Vibration resistance                     | Transport application test with severity level 2 as per FN 942017-4 and EN 60068-2-6 |
| Shock resistance                         | Shock test with severity level 2 as per FN 942017-5 and EN 60068-2-27                |
| Corrosion resistance class (CRC)         | 2 - Moderate corrosion stress  |
| LABS (PWIS) conformity                   | VDMA24364-B1/B2-L  |
| Temperature of medium                    | -5 °C ... 50 °C  |
| Ambient temperature                      | -5 °C ... 50 °C  |
| Electrical connection                    | 2-pin  |
| Type of mounting                         | With through-hole  |
| Pilot exhaust air port 82                | M3   |
| Pilot exhaust air port 84                | M3   |
| Pilot air port 12                        | M3   |
| Pilot air port 14                        | M3   |
| Pneumatic connection 1                   | QS-6   |
| Pneumatic connection 2                   | QS-6   |
| Pneumatic connection 3                   | M7   |
| Pneumatic connection 4                   | QS-6   |
| Pneumatic connection 5                   | M7   |
| Note on materials                        | RoHS compliant   |
| Seals material                           | NBR  |
| Housing material                         | Die-cast aluminum  |