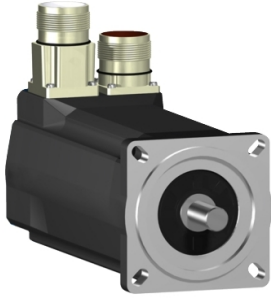


Product datasheet

Specifications



SH3 servomotor, 70mm, 1 stack, smooth Shaft, SinCos Singleturn 128, no Brake, straight, IP65/67

SH30701P01A1200

⚠ Discontinued on: Aug 20, 2025

⚠ Discontinued

Main

Range compatibility	PacDrive 3
Device short name	SH3
Product or component type	Servo motor

Complementary

Maximum mechanical speed	8000 rpm
[Us] rated supply voltage	115...480 V
Network number of phases	Three phase
Continuous stall current	1.8 A
Continuous stall torque	1.25 N.m at 115...480 V three phase
Continuous power	690 W
Peak stall torque	3.5 N.m at 115...480 V three phase
Nominal output power	220 W at 115 V single phase 440 W at 230 V single phase 820 W at 400 V three phase 950 W at 480 V three phase
Nominal torque	1.4 N.m at 115 V single phase 1.4 N.m at 230 V single phase 1.1 N.m at 400 V three phase 1.1 N.m at 480 V three phase
Nominal speed	1500 rpm at 115 V single phase 3000 rpm at 230 V single phase 6000 rpm at 400 V three phase 7200 rpm at 480 V three phase
Maximum current Irms	5.7 A
Shaft end	Smooth shaft
Shaft diameter	11 mm
Shaft length	23 mm
IP degree of protection	IP65 motor: conforming to IEC 60034-5 IP65 shaft bushing: conforming to IEC 60034-5 IP67 housing: conforming to IEC 60034-5
Encoder type	Absolute single turn SinCos Hiperface
Speed feedback resolution	128 periods
Holding brake	Without
Mounting support	International standard flange
Motor flange size	70 mm

Electrical connection	Rotatable right angled connector
Torque constant	0.69 N.m/A at 120 °C
Back emf constant	46 V/krpm at 20 °C
Number of motor poles	3.0
Rotor inertia	0.25 kg.cm ²
Stator resistance	10.4 Ohm
Stator inductance	60.25 mH
Maximum radial force Fr	660 N at 1000 rpm 520 N at 2000 rpm 460 N at 3000 rpm 410 N at 4000 rpm 380 N at 5000 rpm 360 N at 6000 rpm
Maximum axial force Fa	80 N
Type of cooling	Natural convection
Length	154 mm
Centring collar diameter	60 mm
Centring collar depth	2.5 mm
Number of mounting holes	4
Mounting holes diameter	5.5 mm
Circle diameter of the mounting holes	82 mm
Product weight	2.1 kg
Sizing reference	SH30701P
Network number of phases	3
Temperature copper hot	130 °C
Electrical connection	straight connector
Output current 3s peak	5.7 A
Inertia	0.0 kg.cm ² of brake 0.0 kg.cm ² of motor

Packing Units

Unit Type of Package 1	PCE
Number of Units in Package 1	1
Package 1 Height	11.176 cm
Package 1 Width	18.796 cm
Package 1 Length	39.370 cm
Package 1 Weight	2.65 kg

Contractual warranty

Warranty (in months)	18
----------------------	----



Environmental Data

Schneider Electric aims to achieve Net Zero status by 2050 through supply chain partnerships, lower impact materials, and circularity via our ongoing “Use Better, Use Longer, Use Again” campaign to extend product lifetimes and recyclability.

[Environmental Data explained >](#)

[How we assess product sustainability >](#)

Use Better



Materials and Substances

EU RoHS Directive

[Compliant By Exemption](#)

PVC free

Yes

Use Longer



Lifetime extension

Repair

No

Use Again



Repack and remanufacture

End of life manual availability

No need of specific recycling operations